

Neural Emotion Director: Speech-preserving semantic control of facial expressions in “in-the-wild” videos

Foivos Paraperas Papantoniou¹ Panagiotis P. Filntisis¹ Petros Maragos¹ Anastasios Roussos^{2,3}

¹School of Electrical & Computer Engineering, National Technical University of Athens, Greece

²Institute of Computer Science, Foundation for Research & Technology - Hellas (FORTH), Greece

³College of Engineering, Mathematics and Physical Sciences, University of Exeter, UK



Figure 1. Our *Neural Emotion Director (NED)* can manipulate facial expressions in input videos while preserving speech, conditioned on either the semantic emotional label (top part of figure), or on an external reference style as extracted from a reference video (bottom part). Please zoom in for details. Video results can be found at: <https://foivospar.github.io/NED/>

Abstract

In this paper, we introduce a novel deep learning method for photo-realistic manipulation of the emotional state of actors in “in-the-wild” videos. The proposed method is based on a parametric 3D face representation of the actor in the input scene that offers a reliable disentanglement of the facial identity from the head pose and facial expressions. It then uses a novel deep domain translation framework that alters the facial expressions in a consistent and plausible manner, taking into account their dynamics. Finally, the altered facial expressions are used to photo-realistically manipulate the facial region in the input scene based on an especially-designed neural face renderer. To the best of our knowledge, our method is the first to be capable of controlling the actor’s facial expressions by even using as a sole input the semantic labels of the manipulated emotions, while at the same time preserving the speech-related lip movements. We conduct extensive qualitative and quantitative evaluations and comparisons, which demonstrate the effectiveness of our approach and the especially promising

results that we obtain. Our method opens a plethora of new possibilities for useful applications of neural rendering technologies, ranging from movie post-production and video games to photo-realistic affective avatars.

1. Introduction

Photo-realistically manipulating faces in images or videos has received substantial attention lately, with impressive results that expand the range of creative video editing, content creation and the VFX industry. Yet, when it comes to altering the facial emotion in videos, existing techniques exhibit severe limitations. The importance of this type of manipulation is clearly illustrated when shooting movies, as capturing the desired actor’s emotion typically requires multiple efforts, despite the uttered words being predefined. A robust solution to emotion editing would conveniently place the manipulation of facial performance in the post-production stage.

In the past, the problem has been tackled by assuming that different recordings of the same script being acted in

multiple emotions are available; hence, enabling to switch or blend between takes, after perfect synchronization has been achieved [33]. However, in a more realistic scenario, one would like to make, *e.g.*, a *neutral* actor look *happy*, without using pre-existing footage. Combining performances from unpaired data is much more challenging.

Recently, *image-to-image translation* has been successfully applied to emotion editing by casting the problem in the image space [7, 9]. These methods deal with static images, where altering the mouth shape (*e.g.* opening a closed mouth to show surprise) is acceptable, if not desired. However, without placing any specific constraint on the mouth region, lip synchronization may be lost when they are directly applied to video sequences.

More related to this task, is the *face reenactment* problem, where the facial performance of a source actor is transferred to a target one, making the latter mimic the expressions of the former. State-of-the-art techniques [13, 23, 51] achieve compelling photo-realism by training a neural renderer conditioned on a facial representation (*e.g.* 3DMMs). Nonetheless, this is substantially different from semantically controlling the target actor, since the expressions are merely copied from another subject. Instead, we would like to edit the actor’s own expressions based on the desired emotion, while preserving the mouth motion. Recent methods address only one aspect of this problem. For instance, DSM [39] generates novel expressions based on emotional labels without retaining the original speech, while [22] preserves mouth movements, but the proposed manipulation is limited to matching a single target speaking style.

In this work, we propose a hybrid method, in which a parametric 3D face representation is translated to different domains, and then used to drive synthesis of the target face by means of a video-based neural renderer. Our method, which we call *Neural Emotion Director (NED)*, achieves photo-realistic manipulation of the emotional state of actors in “in-the-wild” videos, see *e.g.* Fig. 1. It can translate a facial performance to any of the 6 basic emotions (angry, happy, surprise, fear, disgust, sadness) plus neutral, using only as input its semantic label, while retaining the original mouth motion. It also allows to attach a specific style to the target actor, without requiring person-specific training. This means that the reference style can be extracted at test time from any given video: our system can, for example, make Robert De Niro yell in the way of Al Pacino, without ever seeing footage of the latter during training. Our contributions can be summarized as follows:

- To the best of our knowledge, we propose the first video-based method for “directing” actors in “in-the-wild” conditions, by translating their facial expressions to multiple unseen emotions or styles, without altering the uttered speech.
- We introduce an *emotion-translation* network, which we call *3D-based Emotion Manipulator*, that receives a se-

quence of expression parameters and translates them to a given target domain or a reference style and is trained on non-parallel data. We train this network on 2 large video databases annotated with emotion labels.

- We design a video-based face renderer, to decode the parametric representation back to photo-realistic frames. Building upon robust, state-of-the-art face editing techniques (face segmentation, alignment, blending) we modify only the face area, while the background remains unchanged, making it possible to manipulate challenging scenes.
- We conduct extensive qualitative and quantitative experiments, user studies and ablation studies to evaluate our method and compare it with recent state-of-the-art methods. The experiments demonstrate the effectiveness and advantages of our method, which achieves promising results in very challenging scenarios as the ones encountered in movie scenes with moving background objects.
- We release our code and trained models [1].

2. Related Work

Face manipulation methods can be divided according to whether they directly edit face portraits through convolutional architectures, or they rely on a geometric face representation:

Image-based emotion editing. The introduction of GANs [15] has sparked a growing line of research in the field of image and video synthesis. The vast majority of works utilise a conditional generator, in the sense that the synthesized image is conditioned on another image (*e.g.* [19]). This enables translating images between different domains (*i.e.* *image-to-image translation*) while preserving the content of the source image, even by training on non-parallel data through the idea of *cycle consistency* [54]. The use of such techniques on face images enables the altering of facial attributes (*e.g.* hair color, gender etc.) and constitutes a major part of the so-called area of *deepfakes*. The multi-domain framework of StarGAN [7] demonstrated the potential of altering the facial emotions in images by translating them according to the given semantic label (*e.g.* happy, angry etc.). Other techniques make use of continuous emotion labels, such as the *intensity* [12], or the *Valence-Arousal* space [32]. Recently, the proposed method of GANmut [9] introduced a way of obtaining a 2D interpretable conditional label system even when using a dataset annotated with solely categorical labels of basic emotions. However, all the above methods translate static frames without taking into account the dynamic nature of facial performance. This is especially essential in the mouth area, as the conveyed speech may be distorted if such techniques are applied independently to every frame of a video. Moreover, they are usually trained on large datasets of images, containing several different identities, which is likely to cause an identity leakage, *e.g.* in cases where a closed

mouth is replaced with a smile revealing the teeth of another identity. At the same time, progress in the field shows the potential of generating diverse versions of a given image, by conditioning the generator on dense representations rather than coarse domain labels [8]. To overcome the aforementioned limitations, we utilise a GAN-based *domain-to-domain translation* method (inspired by StarGAN v2 [8]), which translates sequences of subject-agnostic parametric representations of facial expressions instead of images. Then, our person-specific face renderer ensures that the manipulated expressions are synthesized in an identity-preserving way.

Geometry-based face manipulation. In the last years, the problem of manipulating faces on a parametric space has attracted increased interest. Face reenactment is the most typical example, where the target actor is forced to mimic the expressions of a source subject in a reference video. Some works utilise 2D facial landmarks for capturing the expressions and driving the target actor either via image-warping [2] or neural rendering [51]. *3D Morphable Models (3DMMs)* [3] are a very popular choice, as they offer a disentangled representation of expressions from identity. Traditional techniques [40], [41] perform 3D face reconstruction on the reference video and render the target subject under the source expressions on top of the original target footage. Learning-based methods, like DVP [23] and Head2Head++ [13] use conditional GANs to render the target subject under the given conditions (expressions, pose, eye-gaze).

Nevertheless, these methods offer no semantic control over the generated video, as they directly copy the expressions from a source actor. ICface [43] and FACEGAN [44] present a more intuitive animation framework by conditioning synthesis on *Action Units (AU)* values, but setting individual AU values is a cumbersome process and requires expertise to achieve the desired emotion. Solanki and Rousos [39] train a decoder network that maps *Valence-Arousal* pairs to expression coefficients of a 3D face model, and synthesize the target actor with a neural renderer. Their method, however, totally ignores the original expressions and mouth motion of the actor. Groth *et al.* [16] try to alter the emotional state of an actor by merely interpolating between his/her expressions and the MoCap data obtained from a reference actor. Kim *et al.* [22] presented a style-preserving solution to film dubbing, where the expression parameters of the dubber pass through a *style-translation* network before driving the performance of the foreign actor. Their method preserves the dubber’s speech, but can only translate between a pair of speaking-styles (dubber-to-actor). Other methods for generating emotional talking faces include audio-driven [20] and text-driven [48] techniques. To the best of our knowledge, there is no systematic way of translating an existing facial performance in a video

to multiple emotions given only semantic information as input, while preserving the original speech. Our method offers an automatic solution to this task through the proposed *3D-based Emotion Manipulator*. It does not attempt to handle the specific speaking styles of two predefined actors (as in [22]), but is able to translate the expressions of any subject to any basic emotion or a given reference style.

3. Method

Our *Neural Emotion Director (NED)* framework addresses the challenging task of emotion-related semantic manipulation of faces in videos while preserving their speech-related mouth motion. An outline of the proposed pipeline at test time is presented in Fig. 2. It consists of three main modules (*3D Face Analysis*, *3D-based Emotion Manipulator* and *Photo-realistic Synthesis “in the wild”*) that are presented in the following sections.

3.1. 3D Face Analysis

Face detection and segmentation: We first perform face detection, cropping and resizing to 256×256 pixels using [52]. We then apply FSGAN [37] to segment the face and remove the background.

3D face reconstruction: We harness the power of 3DMMs [3] to estimate the 3D face geometry, while disentangling the expression contributions from the identity-specific and 3D pose ones. This enables us to map the emotion translation problem from the image space to the space of 3D model parameters in a subject-agnostic manner. We perform deep 3D face reconstruction with the recent state-of-the-art method of DECA [14] that uses the FLAME model [31]: For each frame of the input video, DECA regresses the parameters of the camera $\mathbf{c} \in \mathbb{R}^3$, head pose $\mathbf{p} \in \mathbb{R}^6$ (including 3 jaw articulation parameters), identity $\mathbf{a} \in \mathbb{R}^{100}$, expression $\mathbf{e} \in \mathbb{R}^{50}$, as well as the person-specific detail vector $\delta \in \mathbb{R}^{128}$, which adds mid-frequency details to the face geometry. We use the latter to create detailed shape images $\mathbf{S} \in \mathbb{R}^{256 \times 256 \times 3}$ (see 3D facial shapes in Fig. 2).

Landmark detection and face alignment: We use FAN [4] to obtain 68 facial landmarks for each frame. Afterwards, similarly to [13], we estimate eye pupil coordinates based on the inverse intensities of the pixels within the eye area and create eye images $\mathbf{E} \in \mathbb{R}^{256 \times 256 \times 3}$ that provide the face renderer with information about the eye-gaze. However, in contrast to [13], we only draw two red disks around eye pupils and not the edges of the outline. This is because we accurately integrate information about eye blinking within the NMFC and detailed shape images (see Sec. 3.3), thanks to the reliable reconstructions in the eye regions obtained by DECA [14]. We then align all face frames to a face template, based on the extracted face landmarks and Procrustes analysis. We found that such face alignment boosts our face renderer’s generalization ability.

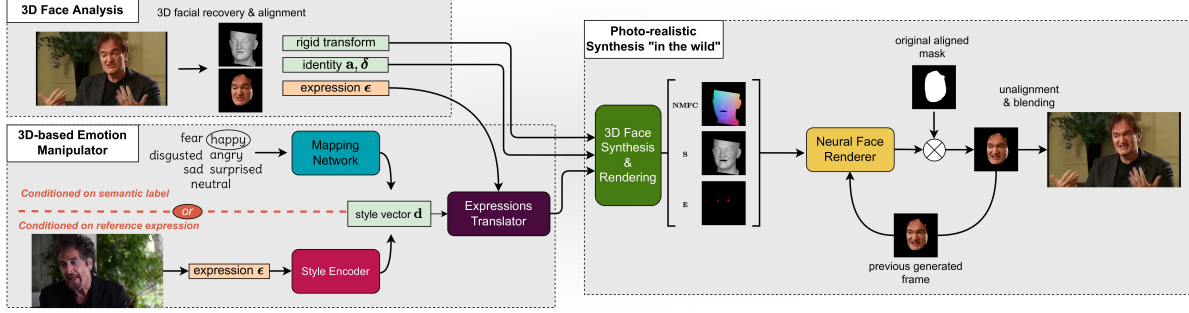


Figure 2. Overview of our *Neural Emotion Director (NED)* at inference time. First, we perform 3D facial recovery and alignment on the input frames to obtain the expression parameters of the face. Then, these parameters are translated using our *3D-based Emotion Manipulator*, where the style vector is computed by either a semantic label (i.e., the emotion), or a driving reference video. Finally, the produced 3D facial shape is concatenated with the Normalized Mean Face Coordinate (NMFC) and eye images and fed into a neural renderer (along with previously computed frames), in order to render the manipulated photo-realistic frames.

We apply the same alignment to the NMFC, shape, and eye images. For more details on the face alignment step, please refer to the Supp. Material.

3.2. 3D-based Emotion Manipulator

Following the *3D Face Analysis* step, information related to the facial expression in a frame is encoded in the expression vector $\mathbf{e} \in \mathbb{R}^{50}$ and the 3 jaw parameters (formed as the last 3 components of the pose vector $\mathbf{p} \in \mathbb{R}^6$). We expand the 50 expression parameters \mathbf{e} with the jaw opening \mathbf{p}_4 (the 1st jaw articulation parameter), as this is the main parameter that describes speech-related mouth motions. Thus, we concatenate the two into a single vector, namely the full expression vector $\boldsymbol{\epsilon} = (\mathbf{p}_4; \mathbf{e}) \in \mathbb{R}^{51}$, henceforth called *expression vector* for simplicity. To cope with the dynamic nature of facial expressions, we group frames into N -length sequences $\mathbf{s} = (\boldsymbol{\epsilon}^n, \dots, \boldsymbol{\epsilon}^{n+N-1})$, with $N=10$. Given the set \mathcal{Y} of the $c=7$ emotion labels (neutral, happy, fear, sad, surprised, angry, disgusted), each denoting a distinct domain, and the set \mathcal{S} of sequences of expression parameters, we design a *3D-based Emotion Manipulator* that translates a sequence of expression vectors $\mathbf{s} \in \mathcal{S}$ to a given emotion $y \in \mathcal{Y}$ in a realistic way that preserves the original mouth motion. Inspired by the StarGAN v2 [8] framework, which offers diversity in the generated samples by conditioning the generator on a continuous style vector, we design an architecture with the following four modules:

Expressions Translator: The translator G takes as input a sequence of expressions \mathbf{s} and a style vector $\mathbf{d} \in \mathbb{R}^{16}$ and translates \mathbf{s} into an output sequence of expression vectors $G(\mathbf{s}, \mathbf{d}) \in \mathcal{S}$ that reflects the speaking style encoded in \mathbf{d} . To inject \mathbf{d} into G , we concatenate \mathbf{d} with each of the N vectors of the sequence.

Style encoder: Our style encoder E extracts the emotion-related style vector $\mathbf{d} = E(\mathbf{s})$ of an input sequence \mathbf{s} and, thus, enables the translator G to translate a given sequence

according to the speaking style extracted from a reference sequence. In contrast to [8], our style encoder does not require any knowledge about the ground truth emotion label y of the reference sequence \mathbf{s} .

Mapping network: The mapping network M learns to generate style vectors $\mathbf{d} = M_y(\mathbf{z}) \in \mathbb{R}^{16}$ related to a target emotion $y \in \mathcal{Y}$, by transforming a latent code $\mathbf{z} \in \mathbb{R}^4$ sampled from a normal distribution. Here, $M_y(\cdot)$ denotes the output branch of M that corresponds to the emotion y . This network allows the translator to translate a sequence of expressions to a target emotion, by merely sampling random noise, and specifying the desired semantic emotion label.

Expressions Discriminator: Our discriminator D has $c = 7$ branches (similarly to M) and learns to discriminate between real \mathbf{s} and fake $G(\mathbf{s}, \mathbf{d})$ sequences of each domain y by outputting a scalar value $D_y(\mathbf{s})$ for each branch.

The network M follows a simple MLP architecture, whereas G , E and D use recurrent architectures with LSTM units [18].

3.2.1 Training and testing of the Emotion Manipulator

Given a dataset of sequences of expression vectors $\mathbf{s} \in \mathcal{S}$ and their corresponding ground truth labels of emotions $y \in \mathcal{Y}$, we train our networks in 2 alternating steps: 1) first we sample $\mathbf{z} \in \mathbb{R}^4$ from a normal distribution, we randomly pick a target domain $\tilde{y} \in \mathcal{Y}$, and employ our mapping network for generating the speaking style $\tilde{\mathbf{d}} = M_{\tilde{y}}(\mathbf{z})$. 2) then we directly extract the style from a reference sequence $\tilde{\mathbf{s}}$ with our style encoder $\tilde{\mathbf{d}} = E(\tilde{\mathbf{s}})$ and store the reference label \tilde{y} . In both cases, the translator combines an input sequence \mathbf{s} (belonging to domain y) with the style vector $\tilde{\mathbf{d}}$ and produces an output sequence $G(\mathbf{s}, \tilde{\mathbf{d}})$ belonging to the target domain \tilde{y} and resembling the speaking style in $\tilde{\mathbf{d}}$. The networks are then updated using the following objectives.

Adversarial loss: We use LSGAN [34] with labels $b=c=1$ for real samples and label $a=0$ for fake ones. This way the

mapping network M learns to output the speaking styles that belong to the emotional domain \tilde{y} and the translator to produce sequences of the target domain that are indistinguishable from the real ones.

Style reconstruction loss: As in [8], we make sure the output sequence reflects the given style by using a loss that enforces the style vector of the translated sequence, as extracted by the style encoder E , to match the desired one.

Cycle consistency loss: We use the cycle consistency loss [7, 54], which encourages the translator to produce sequences that preserve the content of the input sequence, so that the input sequence can be reconstructed by translating the output sequence back to the original style $\hat{\mathbf{d}} = E(\mathbf{s})$, as extracted by E .

Speech-preserving loss: As observed in [22], the cycle consistency loss does not always guarantee that the original mouth motion related to speech is preserved by the translator. To this end, we leverage our carefully selected FLAME model [31], which explicitly controls the mouth opening through the 1st jaw parameter. Thus, we add an extra constraint to the total objective, that takes into account only this mouth related parameter, instead of the whole expression vector as in [22]. By properly defining this objective as the maximization of the **correlation** between the original and the translated jaw opening variable, we manage to balance our challenging and contradictory goal of altering the emotion without distorting the perceived speech (see Fig. 3).

Overall objectives: The objective for G , E and M corresponds to a weighted summation of the Adversarial, Style reconstruction, Cycle consistency and Speech-preserving losses. The objective for D corresponds to the discriminator loss. More details and mathematical formulas for the adopted loss functions can be found at the Supp. Material.

We train our *3D-based Emotion Manipulator* on two video databases with annotations of the 6 basic emotions plus neutral: the Aff-Wild2 database [24–30, 50] of “in-the-wild” videos and the MEAD database [46] (we exclude *contempt* for MEAD to match the emotions in Aff-Wild2). We recover the expression parameters for every frame of the videos and extract sliding windows of length N . To get the best of the two databases, we pre-train our networks in Aff-Wild2 and then fine-tune them on a subset of MEAD.

During **testing**, to transform the expressions of a whole input video, we slide the N -length window by 1 frame at a time, translate the sequence through G , and use a weighted averaging of Gaussian type to handle overlaps. The conditional style vector is either generated by M by choosing a target emotion or extracted from a reference video of arbitrary length by E . In the latter case, we process the whole reference video sequentially, extracting a sequence of style vectors adopting the same sliding pattern. We then take the **geometric median** [45] of them as the style vector representing the whole reference video and feed it to G .



Figure 3. Effect of our speech-preserving loss. Without this loss (middle row), the result does not preserve the mouth movement from the input video. In contrast, our full model (bottom row) translates the expression of the actor to happy while preserving his mouth movements and speech. Please zoom in for details.

3.3. Photo-realistic Synthesis “in the wild”

3D Face Synthesis & Rendering: Having modified the expression parameters through our *3D-based Emotion Manipulator*, we synthesize a manipulated 3D face geometry under the new emotion. We then render it (using conventional 3D graphics) to a convenient representation for neural rendering, the so-called *Normalized Mean Face Coordinate (NMFC)* image [13], and concatenate it with the similarly-rendered detailed shape image \mathbf{S} and eye image \mathbf{E} .

Neural Face Renderer: We feed our neural renderer with the NMFC, \mathbf{S} and \mathbf{E} images as conditional input. We build it upon the publicly available Head2Head++ [13] implementation and train it on the training footage of a target actor in a self-reenactment fashion (i.e. with the original face geometry). We follow the recurrent scheme of [13] by feeding the generator with the conditional inputs of both the current as well as the two previous frames, along with the two previously generated images. However, in contrast to [13], we include \mathbf{S} as additional conditional input, as described above, and constrain image synthesis to the aligned and masked faces, since we account for changing background. As in [13] we employ a dedicated *mouth discriminator* to enhance realism in the mouth area.

Blending: Face alignment is reversed by transforming the generated images according to the inverse of the previously stored alignment matrix. We then carefully blend the synthesized face with the original background, enabling the manipulation of “in-the-wild” videos. For this, we use multi-band blending [5], as we found it to perform better than soft-masking or Poisson editing [38] in terms of smooth boundary transition.

For more details on this module, please refer to the Supp. Material.

4. Experimental Results

We conduct comprehensive qualitative and quantitative evaluations of our method and comparisons with recent state-of-the-art methods. **Additional results and visual-**

izations are provided on our website [1].

Our experiments use the following **datasets**: **YouTube Actors dataset**: We collected a small dataset from 6 YouTube videos that included facial videos of 6 actors during film scenes, TV shows and interviews. **MEAD dataset**: We chose 3 actors from the recent MEAD database [46]. For every actor, we selected 30 videos for each of the 6 basic emotions (happy, angry, surprised, fear, sad, disgusted) plus neutral, resulting to a total of 630 videos from MEAD. For more details about the datasets used in the experiments, please refer to the Supp. Material.

A person-specific face renderer had to be trained separately for each actor of these datasets. Yet, we found that by training a new model from scratch for a given actor, the generator tends to overfit to this actor’s idiosyncrasies failing to synthesize novel emotions, if those were not present in his/her training footage. For YouTube actors, finding a few-minute-long footage that covers the total range of emotions is often impossible. To overcome the challenge of generating unseen expressions of an actor while preserving his/her identity we propose training a single **meta-renderer** on a mix of videos including YouTube and MEAD actors, and then, fine-tuning the **meta-renderer** independently for each actor. This helps by sharing the expressivity of the MEAD actors among the YouTube actors. For a further explanation of this process please refer to the Supp. Material.

We **compare** our method with the following recent methods: **GANmut** [9], which transforms an input cropped facial image according to a 2D continuous emotion label. The transformed image is then placed in its original position in the full frame. For a fair comparison, we use the 2D vectors that correspond to one of the pure 7 emotions with maximum intensity. Also, we apply the method in every frame of the input video. **ICface** [43], which also transforms an input cropped image, but based on the determination of pose and AU values. For a fair comparison, this method is only included in the self-reenactment experiments, where the ground truth is available and AU values can be extracted from it in a well-defined and consistent manner. **DSM** [39], which performs semantic manipulation of facial videos based on a categorical emotion label. The labels that this method supports are neutral and only 4 basic emotions (happy, surprised, fear, sad), which is a subset of the labels considered by the other methods and thus the relevant comparisons with DSM are done in this subset. It is worth mentioning that the literature of photo-realistic emotion manipulation of faces in videos is still extremely limited and the aforementioned 3 methods were the only ones for which we could find source code to run for our evaluations. Details about running our method and the methods we compare with can be found at the Supp. Material.

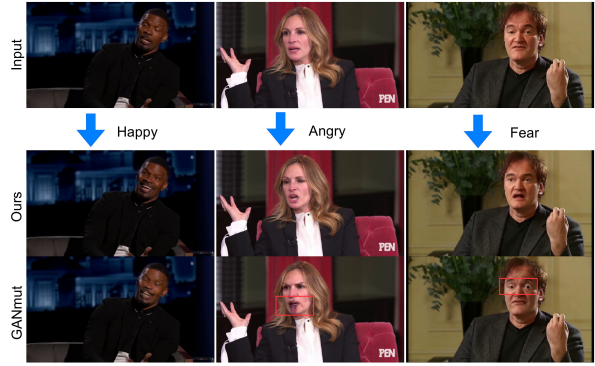


Figure 4. Qualitative comparison between our method and GANmut [9]. We show examples of 3 emotions for 3 actors of the YouTube Actors dataset. GANmut produces visible artifacts especially in the mouth and eyes areas. Please zoom in for details.

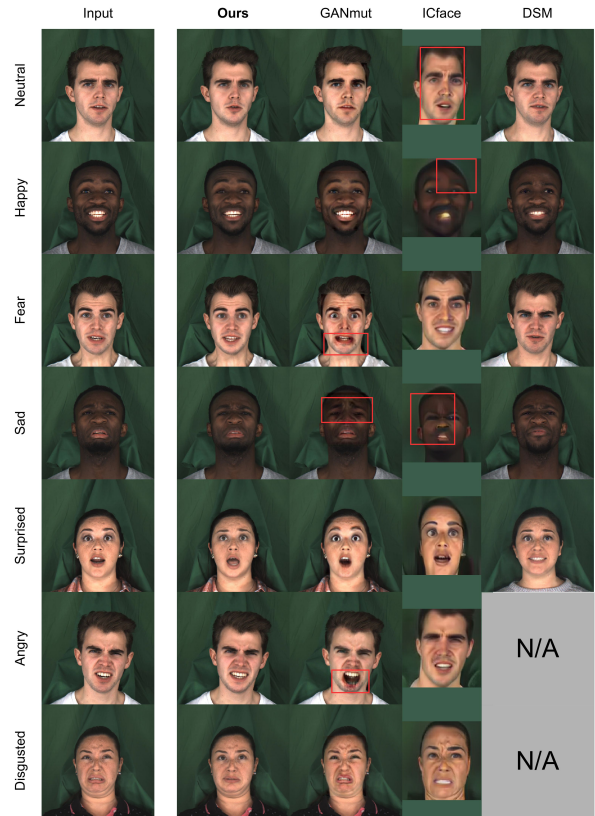


Figure 5. Visual comparison with state-of-the-art methods in the emotional “self-translation” experiment on the MEAD actors. Note that ICface [43] requires a tighter face cropping and padding with the background color has been used for visualization.

4.1. Quantitative Comparisons

To assess the performance of each method in manipulating the emotion we use a variant of the self-reenactment task that includes the manipulation of the expressions. In particular, given a video of emotional label y (e.g. happy), we modify its emotion by defining the target emotion as the

	Ours		GANmut [9]		DSM [39]		ICface [43]	
	FAPD	FID	FAPD	FID	FAPD	FID	FAPD	FID
neutral	14.9	2.1	16.8	2.9	22.1	5.5	40.0	45.8
happy	17.8	3.4	15.0	2.6	27.0	10.3	43.7	50.5
fear	18.4	3.0	20.5	4.3	28.0	8.5	43.0	46.6
sad	19.0	3.0	18.1	4.3	24.5	8.8	38.6	47.4
surprised	18.9	2.9	19.1	7.2	27.3	11.8	46.1	45.0
angry	18.4	3.0	22.4	4.2	-	-	51.7	53.5
disgusted	18.1	3.1	15.1	4.5	-	-	39.7	54.6
avg. (7)	17.9	2.9	18.1	4.3	-	-	43.3	49.0
avg. (5)	17.8	2.9	17.9	4.3	25.8	9.0	42.3	47.1

Table 1. Quantitative comparisons on MEAD in the emotional “self-translation” experiment. Bold values denote the best value for each metric (lower is better). Averaging is done over both the full set of 7 emotion labels and the set of 5 labels supported by DSM [39], for the sake of fair comparison.

same label y (from happy to happy). In this case, the output video should match the original one. Specifically, the discrepancy between the “self-translated” and the real video is measured using the following metrics: 1) **Face Average Pixel Distance (FAPD)**: which is the mean ℓ_2 distance of RGB values across all facial pixels and frames, between the ground truth and generated video. We use the extracted face mask to define the face area. 2) **Fréchet inception distance (FID)** [17]: which is computed by using the feature vectors from a state-of-the-art face recognition network [10] for all the ground truth and the generated frames.

Our *3D-based Emotion Manipulator* can translate the sequences to the same domain by simply using their own style vector as extracted by the style encoder E . However, for the other 3 methods, the label y of the original video has to be known so that it can be used as the target label. Therefore, our quantitative comparison is performed in our **MEAD dataset**, in which videos are emotionally annotated by the authors of [46]. Specifically, for each actor we use 4 videos per emotion, leading to a total of 84 videos, of average duration ~ 3 secs. Results are presented in Tab. 1. For a visual comparison please refer to Fig. 5. Note that *disgusted* and *angry* are not supported by the DSM method.

As can be seen, our method outperforms the baselines in both metrics overall. We also exhibit superior performance in almost all 7 emotions individually. This shows the higher realism of our synthesized videos as well as the better expression transferability in terms of identity preservation (see Fig. 5 for artifacts produced by GANmut and ICface).

4.2. User Studies

We also conducted two web-based user studies:

Emotion Recognition and Realism on MEAD Database:

In the first user study, participants were shown randomly shuffled manipulated videos of 3 actors from MEAD database in all 6 basic emotions and were asked to rate the realism of the footage on a Likert 5-point scale, as well as recognize the emotion shown (from a drop-down list in-

cluding all 6 emotions). Apart from our method, the questionnaire showed to the participants manipulated videos by GANmut [9], DSM [39], as well as the original real videos from MEAD. In total the questionnaire included 66 videos and 20 participants completed it. The results can be seen in Tab. 2 where we observe that all methods have relatively low realism scores. This can be attributed to the fact that the real videos in MEAD include particularly intense expressions, which probably resulted to an overall low frequency of ratings of 4 or 5 (even for real videos) and to an increased tendency to use these ratings (whenever they were used) more exclusively for real videos. However, we see that our method achieves significantly higher realism scores than the other methods, consistently across all 6 emotions. In terms of emotion recognition accuracy, we observe that our method synthesized videos with manipulated emotions that were consistently easier to be recognised by the participants, in comparison to DSM. However, this is not the case when we compare our method with GANmut: The synthetic videos of GANmut achieved a very high accuracy rate, which is even higher than the accuracy for real videos. This, in combination with the low realism score of GANmut (see also the “exaggerated” emotions in Figs. 4 and 5), reflects the fact that GANmut synthesizes intense expressions that typically look fake but are easily recognizable.

Realism on YouTube Actors: In the second study, we presented users with manipulated videos (including the original audio) of 6 YouTube actors in all 6 basic emotions and asked them to rate the realism of the footage, following the same protocol as in the first study. We did not evaluate emotion recognition in this study since ground truth emotion annotations do not exist for this dataset (to compare with). The study included a random shuffling of videos manipulated by our method and GANmut, as well as the original videos. For some indicative frames of these videos, please refer to Fig. 4. DSM was not used for this study, since it cannot handle dynamic backgrounds such as those found in YouTube videos. The questionnaire included 54 videos in total and was completed by 50 participants. The ratings obtained can be seen in Tab. 3. We observe that the realism scores for both methods are relatively low, which can be attributed to the highly challenging task of manipulating the emotions in videos, especially under “in-the-wild” conditions as is the case for the YouTube Actors dataset. However, our method achieves a better score than GANmut and for example succeeds in synthesizing realistic videos more than 20% of the times for 3 out of 6 actors, which is a promising result that shows the potential of our approach. Furthermore, in terms of the most frequent rating, we see that our method is consistently better than GANmut, as it yields a rating of 3 or 2 as the most frequent answer for almost all actors, in contrast to GANmut that yields the rating of 1 as the most frequent.

	Realism				Accuracy			
	Ours	GANmut	DSM	Real Videos	Ours	GANmut	DSM	Real Videos
happy	17%	3%	8%	80%	63%	90%	42%	90%
fear	32%	7%	10%	67%	33%	75%	13%	25%
sad	30%	18%	12%	55%	13%	78%	25%	65%
surprised	22%	8%	7%	82%	17%	82%	5%	82%
angry	25%	10%	-	78%	50%	98%	-	80%
disgusted	40%	20%	-	67%	33%	40%	-	60%
avg.	28%	11%	9%	71%	35%	77%	21%	67%

Table 2. Realism ratings (percentage of users that rated the videos with 4 or 5) and classification accuracy of the user study on MEAD (c.f. Supp. Material for detailed scores).

	Ours					GANmut [9]					Real Videos							
	1	2	3	4	5 'real'	1	2	3	4	5 'real'	1	2	3	4	5 'real'			
McDormand	32	32	52	21	13	23%	59	23	16	28	24	35%	0	2	3	21	124	97%
Pacino	19	45	53	25	8	22%	40	41	26	24	19	29%	0	3	6	29	112	94%
Tarantino	70	29	23	17	11	19%	72	20	26	19	13	21%	1	5	9	43	92	90%
McConaughy	37	63	33	13	4	11%	88	43	12	7	0	5%	0	4	18	33	93	85%
Roberts	34	60	39	12	5	11%	88	27	17	13	5	12%	0	0	3	24	123	98%
Foxx	26	35	39	34	15	33%	79	43	18	6	4	7%	0	0	7	31	111	95%
avg.	36	44	40	20	9	20%	71	33	19	16	13	18%	1	4	8	30	109	93%

Table 3. Realism ratings of the user study on 6 YouTube actors. Columns 1-5 show the number of times that users gave this rating. The column “real” shows the percentage of users that rated the videos with 4 or 5. Bold values denote the most frequent user rating for each method and actor.

4.3. Ablation Study

In order to experimentally confirm our design choices for our face renderer, we performed an ablation study in a pure self-reenactment setting, without any manipulation of the expressions with our *3D-based Emotion Manipulator*. Specifically, we randomly chose 3 actors from our **YouTube dataset** and trained 4 different variations of our renderer from scratch (i.e. without the meta-renderer): First, we **omitted the detailed shape images S** as extra conditioning input. Second, we **omitted the face alignment step**. Third, we trained our **full model**, but **without the meta-renderer** stage as in all previous variations. Finally, we also considered our **full model including the meta-renderer**.

The performance of each variation in relation to the ground truth frames was calculated by means of the FAPD and FID (as defined above), as well as 2 more metrics, namely the APD (same as FAPD but calculated on the entire image) and Mouth-APD (MAPD, same as FAPD but calculated only on a 72×72 pixel area around the mouth center). The results for all metrics, as shown in Tab. 4, demonstrate the contribution of both the detailed shape images and the face alignment, especially in the highly challenging mouth area. Finally, the metrics of the fourth row reveal that the meta-renderer improves the results even further.

5. Discussion

We have shown promising results in various scenarios for a novel application of neural rendering. As expected, there are still limitations in our approach, which can pave the way for future work. For example, our renderer pro-

Variations	APD	FAPD	MAPD	FID
w/o detailed shape images	5.01	12.57	13.27	5.06
w/o face alignment	5.01	12.64	14.59	4.77
full model	4.63	11.35	12.20	4.53
full model with meta-renderer	4.49	10.89	11.66	4.38

Table 4. Ablation study results under the self reenactment setting, averaged across three YouTube actors from our dataset. For all metrics, lower values indicate better performance. Bold and underlined values correspond to the best and the second-best value of each metric, respectively.

duces images of medium resolution which may lead to blurry faces when blending them with high-resolution backgrounds. This may explain some of the low realism scores reported in our user studies. Extending the method to a higher resolution could facilitate the integration of such techniques to the film industry. Successful approaches have already been shown for **face swapping** via progressive training [36]. Also, to further improve the realism of emotion manipulation, the audio content should be modified in a similar way. However, state-of-the-art results in *emotional voice conversion* [53] are still far from matching the quality of synthetic visual content.

Note on social impact. Despite their positive impact, deep learning systems for video manipulation have raised concerns related to the distribution of fake news and other negative social impact [6, 11, 21, 47]. While our goal of speech preservation is inherently opposite to most deepfakes where the output combination of a person and its utterances is entirely fake, our method could also be misused in cases where the conveyed meaning heavily depends on the apparent emotion (e.g. political speeches). We believe that scientists working in the relevant fields need to seriously take into account these risks and ethical issues. Some of the countermeasures include contributing in raising public awareness about the capabilities of current technology and developing systems that detect deepfake videos [35, 42, 49].

6. Conclusion

We proposed *Neural Emotion Director (NED)*, a novel approach for photo-realistic manipulation of the emotions of actors in videos. Our new *3D-based Emotion Manipulator* translates facial expressions by carefully preserving the speech-related content of the source performance, while our *Photo-realistic Synthesis* module faithfully synthesizes the target actor’s face and composites it onto the original video. Our extensive experimental results demonstrate the advantages of our framework over recent state-of-the-art methods and its effectiveness under “in-the-wild” conditions.

Acknowledgments. A. Roussos was supported by the Hellenic Foundation for Research and Innovation (HFRI) under the “1st Call for HFRI Research Projects to support Faculty members and Researchers and the procurement of high-cost research equipment” Project I.C.Humans, Number: 91.

References

- [1] <https://foivospar.github.io/NED/>. 2, 6
- [2] Hadar Averbuch-Elor, Daniel Cohen-Or, Johannes Kopf, and Michael F. Cohen. Bringing portraits to life. *ACM Transactions on Graphics (Proceeding of SIGGRAPH Asia 2017)*, 36(6):196, 2017. 3
- [3] Volker Blanz and Thomas Vetter. A morphable model for the synthesis of 3d faces. In *Proceedings of the 26th Annual Conference on Computer Graphics and Interactive Techniques, SIGGRAPH '99*, page 187–194, USA, 1999. ACM Press/Addison-Wesley Publishing Co. 3
- [4] Adrian Bulat and Georgios Tzimiropoulos. How far are we from solving the 2d & 3d face alignment problem? (and a dataset of 230,000 3d facial landmarks). In *Proceedings of the IEEE International Conference on Computer Vision (ICCV)*, 2017. 3
- [5] Peter J. Burt and Edward H. Adelson. A multiresolution spline with application to image mosaics. *ACM Trans. Graph.*, 2(4):217–236, Oct. 1983. 5
- [6] Bobby Chesney and Danielle Citron. Deep fakes: A looming challenge for privacy, democracy, and national security. *Calif. L. Rev.*, 107:1753, 2019. 8
- [7] Yunjey Choi, Minje Choi, Munyoung Kim, Jung-Woo Ha, Sunghun Kim, and Jaegul Choo. Stargan: Unified generative adversarial networks for multi-domain image-to-image translation. In *Proceedings of the IEEE Conference on Computer Vision and Pattern Recognition (CVPR)*, 2018. 2, 5
- [8] Yunjey Choi, Youngjung Uh, Jaejun Yoo, and Jung-Woo Ha. Stargan v2: Diverse image synthesis for multiple domains. In *Proceedings of the IEEE Conference on Computer Vision and Pattern Recognition (CVPR)*, 2020. 3, 4, 5
- [9] Stefano d’Apolito, Danda Pani Paudel, Zhiwu Huang, Andres Romero, and Luc Van Gool. Ganmut: Learning interpretable conditional space for gamut of emotions. In *Proceedings of the IEEE Conference on Computer Vision and Pattern Recognition (CVPR)*, 2021. 2, 6, 7, 8
- [10] Jiankang Deng, Jia Guo, Xue Niannan, and Stefanos Zafeiriou. Arcface: Additive angular margin loss for deep face recognition. In *Proceedings of the IEEE International Conference on Computer Vision and Pattern Recognition (CVPR)*, 2019. 7
- [11] Nicholas Diakopoulos and Deborah Johnson. Anticipating and addressing the ethical implications of deepfakes in the context of elections. *New Media & Society*, 23(7):2072–2098, 2021. 8
- [12] Hui Ding, Kumar Sricharan, and Rama Chellappa. Exprgan: Facial expression editing with controllable expression intensity. *AAAI*, 2018. 2
- [13] Michail Christos Doukas, Mohammad Rami Koujan, Viktoriia Sharmanska, Anastasios Roussos, and Stefanos Zafeiriou. Head2head++: Deep facial attributes re-targeting. *IEEE Transactions on Biometrics, Behavior, and Identity Science*, 3(1):31–43, 2021. 2, 3, 5
- [14] Yao Feng, Haiwen Feng, Michael J. Black, and Timo Bolkart. Learning an animatable detailed 3D face model from in-the-wild images. *ACM Transactions on Graphics (ToG), Proc. SIGGRAPH*, 40(4):88:1–88:13, 2021. 3
- [15] Ian J. Goodfellow, Jean Pouget-Abadie, Mehdi Mirza, Bing Xu, David Warde-Farley, Sherjil Ozair, Aaron Courville, and Yoshua Bengio. Generative adversarial nets. In *Proceedings of the 27th International Conference on Neural Information Processing Systems - Volume 2, NIPS'14*, page 2672–2680, Cambridge, MA, USA, 2014. MIT Press. 2
- [16] Colin Groth, Jan-Philipp Tauscher, Susana Castillo, and Marcus Magnor. Altering the conveyed facial emotion through automatic reenactment of video portraits. In *Proceedings of the International Conference on Computer Animation and Social Agents (CASA)*, volume 1300, pages 128–135, 2020. 3
- [17] Martin Heusel, Hubert Ramsauer, Thomas Unterthiner, Bernhard Nessler, and Sepp Hochreiter. Gans trained by a two time-scale update rule converge to a local nash equilibrium. In *Proceedings of the International Conference on Neural Information Processing Systems (NeurIPS)*, 2017. 7
- [18] Sepp Hochreiter and Jürgen Schmidhuber. Long short-term memory. *Neural computation*, 9:1735–80, 12 1997. 4
- [19] Phillip Isola, Jun-Yan Zhu, Tinghui Zhou, and Alexei A Efros. Image-to-image translation with conditional adversarial networks. In *Proceedings of the IEEE Conference on Computer Vision and Pattern Recognition (CVPR)*, 2017. 2
- [20] Xinya Ji, Hang Zhou, Kaisiyuan Wang, Wayne Wu, Chen Change Loy, Xun Cao, and Feng Xu. Audio-driven emotional video portraits. In *Proceedings of the IEEE Conference on Computer Vision and Pattern Recognition (CVPR)*, 2021. 3
- [21] Deborah G Johnson and Nicholas Diakopoulos. What to do about deepfakes. *Communications of the ACM*, 64(3):33–35, 2021. 8
- [22] Hyeongwoo Kim, Mohamed Elgharib, Michael Zollhöfer, Hans-Peter Seidel, Thabo Beeler, Christian Richardt, and Christian Theobalt. Neural style-preserving visual dubbing. *ACM Trans. Graph.*, 38(6), Nov. 2019. 2, 3, 5
- [23] Hyeongwoo Kim, Pablo Garrido, Ayush Tewari, Weipeng Xu, Justus Thies, Matthias Nießner, Patrick Pérez, Christian Richardt, Michael Zollöfer, and Christian Theobalt. Deep video portraits. *ACM Transactions on Graphics (TOG)*, 37(4):163, 2018. 2, 3
- [24] D Kollias, A Schulc, E Hajjiev, and S Zafeiriou. Analysing affective behavior in the first abaw 2020 competition. In *Proceedings of the 15th IEEE International Conference on Automatic Face and Gesture Recognition (FG)*, pages 794–800, 2020. 5
- [25] Dimitrios Kollias, Viktoriia Sharmanska, and Stefanos Zafeiriou. Face behavior a la carte: Expressions, affect and action units in a single network. *arXiv preprint arXiv:1910.11111*, 2019. 5
- [26] Dimitrios Kollias, Viktoriia Sharmanska, and Stefanos Zafeiriou. Distribution matching for heterogeneous multi-task learning: a large-scale face study. *arXiv preprint arXiv:2105.03790*, 2021. 5
- [27] Dimitrios Kollias, Panagiotis Tzirakis, Mihalis A Nicolaou, Athanasios Papaioannou, Guoying Zhao, Björn Schuller, Irene Kotsia, and Stefanos Zafeiriou. Deep affect prediction in-the-wild: Aff-wild database and challenge, deep architec-

- tures, and beyond. *International Journal of Computer Vision*, pages 1–23, 2019. 5
- [28] Dimitrios Kollias and Stefanos Zafeiriou. Expression, affect, action unit recognition: Aff-wild2, multi-task learning and arcface. *arXiv preprint arXiv:1910.04855*, 2019. 5
- [29] Dimitrios Kollias and Stefanos Zafeiriou. Affect analysis in-the-wild: Valence-arousal, expressions, action units and a unified framework. *arXiv preprint arXiv:2103.15792*, 2021. 5
- [30] Dimitrios Kollias and Stefanos Zafeiriou. Analysing affective behavior in the second abaw2 competition. In *Proceedings of the IEEE International Conference on Computer Vision (ICCV)*, pages 3652–3660, 2021. 5
- [31] Tianye Li, Timo Bolkart, Michael J. Black, Hao Li, and Javier Romero. Learning a model of facial shape and expression from 4D scans. *ACM Transactions on Graphics, (Proc. SIGGRAPH Asia)*, 36(6):194:1–194:17, 2017. 3, 5
- [32] Alexandra Lindt, Pablo V. A. Barros, Henrique Siqueira, and Stefan Wermter. Facial expression editing with continuous emotion labels. *Proceedings of the 14th IEEE International Conference on Automatic Face & Gesture Recognition (FG)*, pages 1–8, 2019. 2
- [33] Charles Malleson, Jean Charles Bazin, Oliver Wang, Derek Bradley, Thabo Beeler, Adrian Hilton, and Alexander Sorkine-Hornung. Facedirector: Continuous control of facial performance in video. In *Proceedings of the IEEE International Conference on Computer Vision (ICCV)*, pages 3979–3987, 2015. 2
- [34] X. Mao, Q. Li, H. Xie, R. K. Lau, Z. Wang, and S. Smolley. Least squares generative adversarial networks. In *Proceedings of the IEEE International Conference on Computer Vision (ICCV)*, pages 2813–2821, 2017. 4
- [35] Yisroel Mirsky and Wenke Lee. The creation and detection of deepfakes: A survey. *ACM Computing Surveys (CSUR)*, 54(1):1–41, 2021. 8
- [36] Jacek Naruniec, Leonhard Helming, Christopher Schroers, and Romann M. Weber. High-resolution neural face swapping for visual effects. *Computer Graphics Forum*, 39(4):173–184, 2020. 8
- [37] Yuval Nirkin, Yosi Keller, and Tal Hassner. FSGAN: Subject agnostic face swapping and reenactment. In *Proceedings of the IEEE International Conference on Computer Vision (ICCV)*, pages 7184–7193, 2019. 3
- [38] Patrick Pérez, Michel Gangnet, and Andrew Blake. Poison image editing. *ACM Trans. Graph.*, 22(3):313–318, July 2003. 5
- [39] Girish Kumar Solanki and Anastasios Roussos. Deep semantic manipulation of facial videos. *arXiv preprint arXiv:2111.07902*, 2021. 2, 3, 6, 7
- [40] Justus Thies, Michael Zollhöfer, Matthias Nießner, Levi Valgaerts, Marc Stamminger, and Christian Theobalt. Real-time expression transfer for facial reenactment. *ACM Trans. Graph.*, 34(6), Oct. 2015. 3
- [41] Justus Thies, Michael Zollhöfer, Marc Stamminger, Christian Theobalt, and Matthias Nießner. Face2face: Real-time face capture and reenactment of rgb videos. *Commun. ACM*, 62(1):96–104, Dec. 2018. 3
- [42] Ruben Tolosana, Ruben Vera-Rodriguez, Julian Fierrez, Aythami Morales, and Javier Ortega-Garcia. Deepfakes and beyond: A survey of face manipulation and fake detection. *Information Fusion*, 64:131–148, 2020. 8
- [43] Soumya Tripathy, Juho Kannala, and Esa Rahtu. Icfacer: Interpretable and controllable face reenactment using gans. In *Proceedings of the IEEE/CVF Winter Conference on Applications of Computer Vision (WACV)*, 2020. 3, 6, 7
- [44] Soumya Tripathy, Juho Kannala, and Esa Rahtu. Facegan: Facial attribute controllable reenactment gan. In *Proceedings of the IEEE/CVF Winter Conference on Applications of Computer Vision (WACV)*, 2021. 3
- [45] Yehuda Vardi and Cun-Hui Zhang. The multivariate 11-median and associated data depth. *Proceedings of the National Academy of Sciences of the United States of America*, 97:1423–6, 03 2000. 5
- [46] Kaisiyuan Wang, Qianyi Wu, Linsen Song, Zhuoqian Yang, Wayne Wu, Chen Qian, Ran He, Yu Qiao, and Chen Change Loy. Mead: A large-scale audio-visual dataset for emotional talking-face generation. In *Proceedings of the European Conference on Computer Vision (ECCV)*, pages 700–717, 2020. 5, 6, 7
- [47] Aya Yadlin-Segal and Yael Oppenheim. Whose dystopia is it anyway? deepfakes and social media regulation. *Convergence*, 27(1):36–51, 2021. 8
- [48] Xinwei Yao, Ohad Fried, Kayvon Fatahalian, and Maneesh Agrawala. Iterative text-based editing of talking-heads using neural retargeting. *ACM Trans. Graph.*, 40(3), Aug. 2021. 3
- [49] Peipeng Yu, Zhihua Xia, Jianwei Fei, and Yujiang Lu. A survey on deepfake video detection. *IET Biometrics*, 2021. 8
- [50] Stefanos Zafeiriou, Dimitrios Kollias, Mihalis A Nicolaou, Athanasios Papaioannou, Guoying Zhao, and Irene Kotsia. Aff-wild: Valence and arousal ‘in-the-wild’ challenge. In *2017 IEEE Conference on Computer Vision and Pattern Recognition Workshops (CVPRW)*, pages 1980–1987. IEEE, 2017. 5
- [51] Egor Zakharov, Aliaksandra Shysheya, Egor Burkov, and Victor Lempitsky. Few-Shot Adversarial Learning of Realistic Neural Talking Head Models. In *Proceedings of the IEEE International Conference on Computer Vision (ICCV)*, pages 9458–9467, 2019. 2, 3
- [52] K. Zhang, Z. Zhang, Z. Li, and Y. Qiao. Joint face detection and alignment using multitask cascaded convolutional networks. *IEEE Signal Processing Letters*, 23(10):1499–1503, Oct 2016. 3
- [53] Kun Zhou, Berrak Sisman, Rui Liu, and Haizhou Li. Emotional voice conversion: Theory, databases and esd. *ArXiv*, abs/2105.14762, 2021. 8
- [54] Jun-Yan Zhu, Taesung Park, Phillip Isola, and Alexei A. Efros. Unpaired image-to-image translation using cycle-consistent adversarial networks. In *Proceedings of the IEEE International Conference on Computer Vision (ICCV)*, pages 2242–2251, 2017. 2, 5