

# ADEL: Adaptive Distribution Effective-matching Method for Guiding Generators of GANs

Jungeun Kim<sup>1,a</sup>[0000-0002-5341-726X], Jeongeun Park<sup>2,a</sup>[0000-0001-9431-952X],  
and Ha Young Kim<sup>2,b</sup>[0000-0001-5853-7589]

<sup>1</sup> Yonsei University, Department of AI, South Korea  
jekim5418@yonsei.ac.kr

<sup>2</sup> Yonsei University, Graduate School of Information, South Korea  
{park.je,hayoung.kim}@yonsei.ac.kr

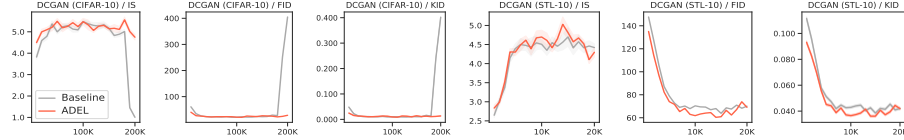
## 1 Additional Results

Figure 1 shows that LSGAN (ADEL) generates better images.

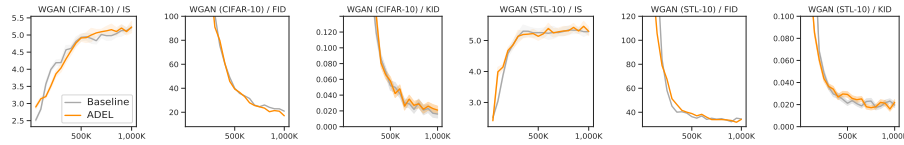


**Fig. 1.** Sample images generated by LSUN-Bedroom of LSGAN baseline model (top row) and LSGAN (ADEL) model (bottom row).

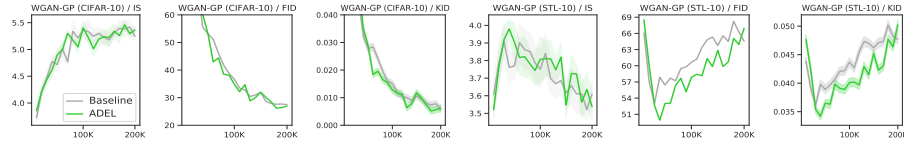
Figures 2, 3, 4, and 5 are graphs comparing the performance of each model and the model to which ADEL is applied at each evaluation iteration. In the graph, the colored line indicates the performance when ADEL is applied.



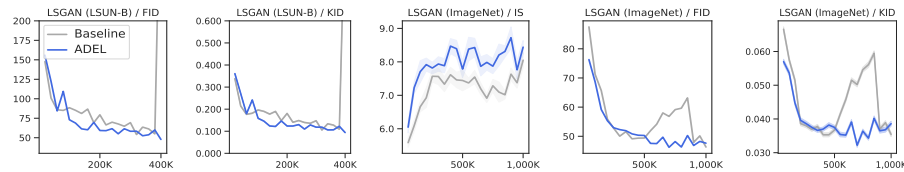
**Fig. 2.** Performance comparison between DCGAN and DCGAN (ADEL) for every iteration.



**Fig. 3.** Performance comparison between WGAN and WGAN (ADEL) for every iteration.



**Fig. 4.** Performance comparison between WGAN-GP and WGAN-GP (ADEL) for every iteration.



**Fig. 5.** Performance comparison between LSGAN and LSGAN (ADEL) for every iteration. LSUN-B indicates LSUN-Bedroom dataset.