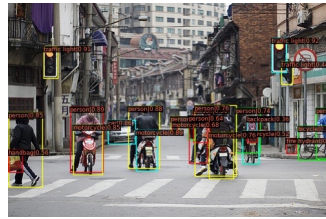




input image



detection results



stage 1:  
sampling points for person #1



stage 2:  
sampling points for person #1



stage 3:  
sampling points for person #1



stage 4:  
sampling points for person #1



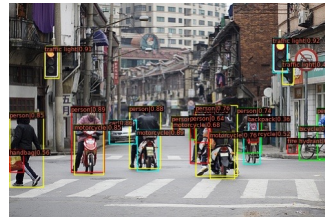
stage 5:  
sampling points for person #1



stage 6:  
sampling points for person #1



input image



detection results



stage 1:  
sampling points for person #1



stage 2:  
sampling points for person #1



stage 3:  
sampling points for person #1



stage 4:  
sampling points for person #1



stage 5:  
sampling points for person #1



stage 6:  
sampling points for person #1