

Supplementary Material of “How Do Label Errors Affect Thin Crack Detection by DNNs”

Liang Xu¹ Han Zou^{1,2} Takayuki Okatani^{1,2}

¹Graduate School of Information Sciences, Tohoku University ²RIKEN Center for AIP

{xu, hzou, okatani}@vision.is.tohoku.ac.jp

A. Examples of Detection Result

Figure 1 shows some examples of detection results by the UNet model we explained in the main paper.

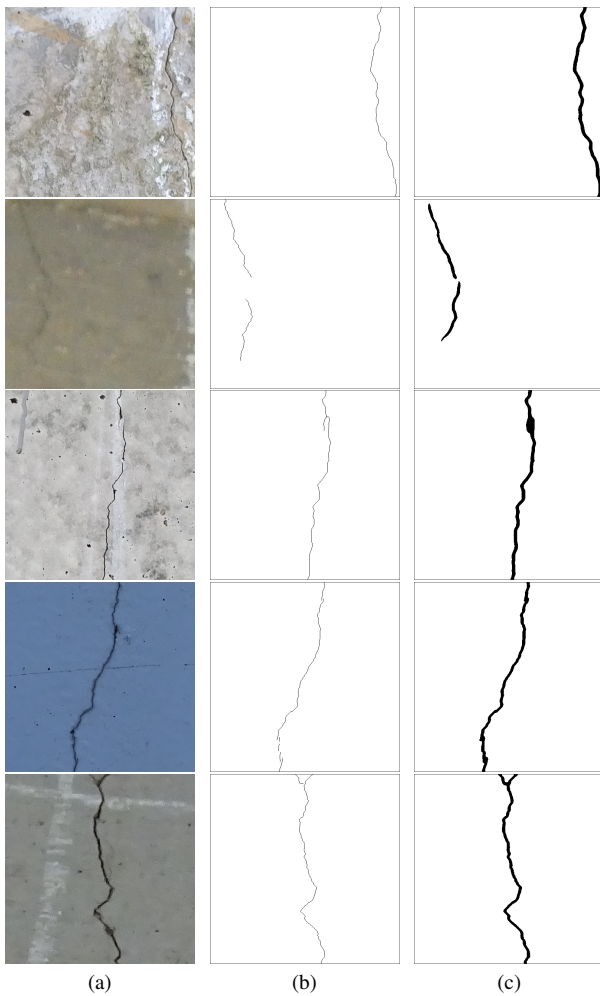


Figure 1. Examples of detection result. The first column is the image, the second column is the label and the third column is the output from our model.