

Supplementary Material: Creating and Reenacting Controllable 3D Humans with Differentiable Rendering

Thiago L. Gomes¹

Thiago M. Coutinho¹

Rafael Azevedo¹

Renato Martins²

Erickson R. Nascimento¹

¹Universidade Federal de Minas Gerais (UFMG), Brazil ² Universit Bourgogne Franche-Comt, France

{thiagoluange, thiagocoutinho, rafaelvieira}@dcc.ufmg.br,
renato.martins@u-bourgogne.fr, erickson@dcc.ufmg.br

We provide in this document some supplementary material to our WACV submission. These qualitative results were not included in the paper submission due to page space restrictions. Section 1 shows image sequences of the rendering presented in Figure 5 of the paper, and Section 2 shows additional frames used to compute the metrics in Table 2. We also provide a video for more visual qualitative results and details.

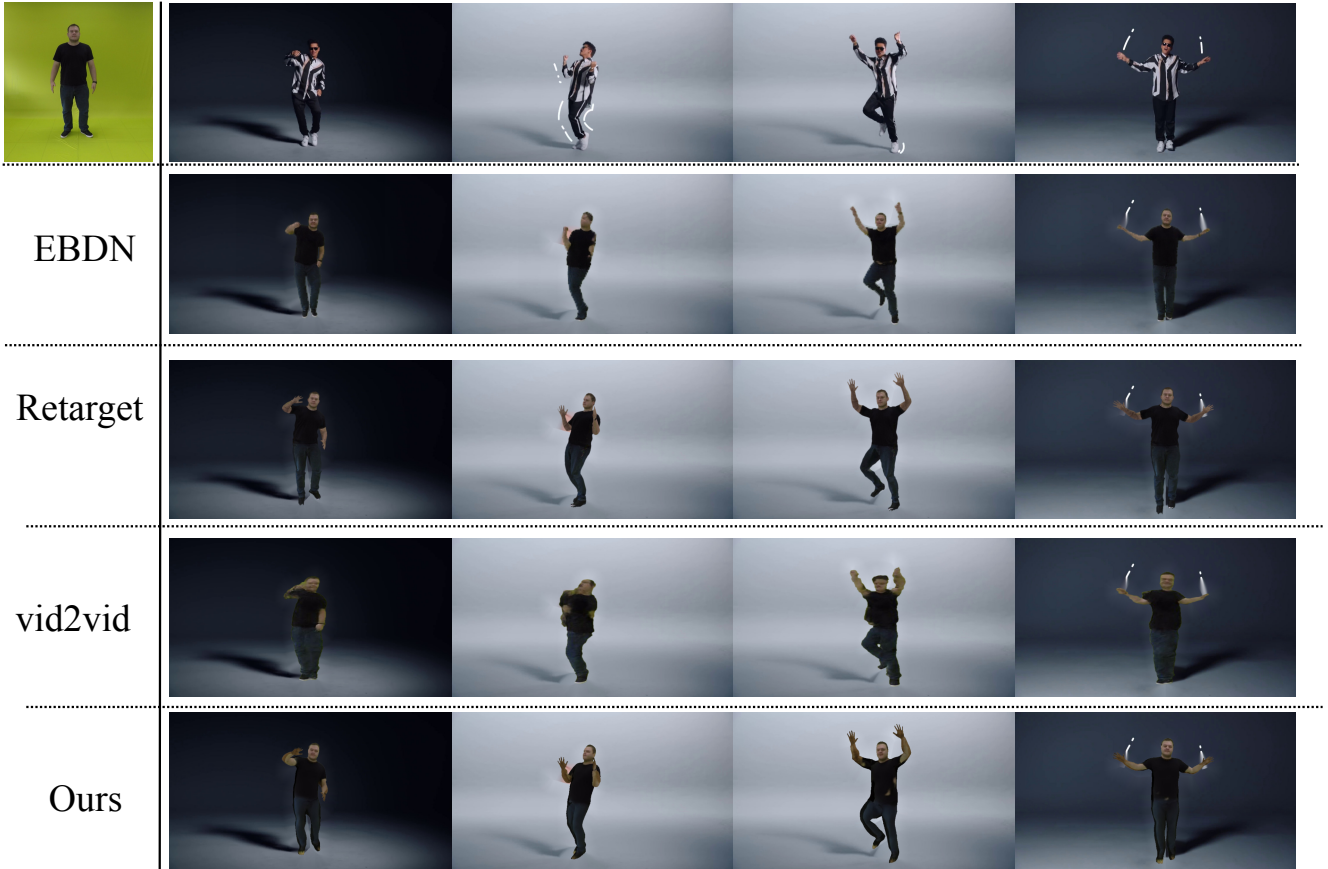


Figure 1: **Qualitative evaluation in bruno-mars sequence.** First row: original video and target actor; Second row: EBDN results; Third row: results of Retarget; Fourth row: results of vid2vid; Fifth row: Our results.



Figure 2: **Qualitative evaluation in tom-cruise sequence.** First row: original video and target actor; Second row: result of EBDN; Third row: results of Retarget; Fourth row: results of vid2vid; Fifth row: Our results.

1. Additional Qualitative Results

We start presenting examples from four YouTube videos that are publicly available (Figures 1 and 2). These results were introduced in Figure 5 (of the paper submission). We also performed the rendering and transferring in the publicly available videos using EBDN, Retarget, vid2vid, and our approach.

2. Qualitative Results in the Dataset Videos

In this section, we show the visual results of the quantitative metrics presented in the paper on Table 2 (Figures 3 and 4). We performed the transferring in the dataset videos using EBDN, Imper, Retarget, vi2vid, V-Unet, and our approach. One can notice the large discrepancy between the quality of the frames for the same method.

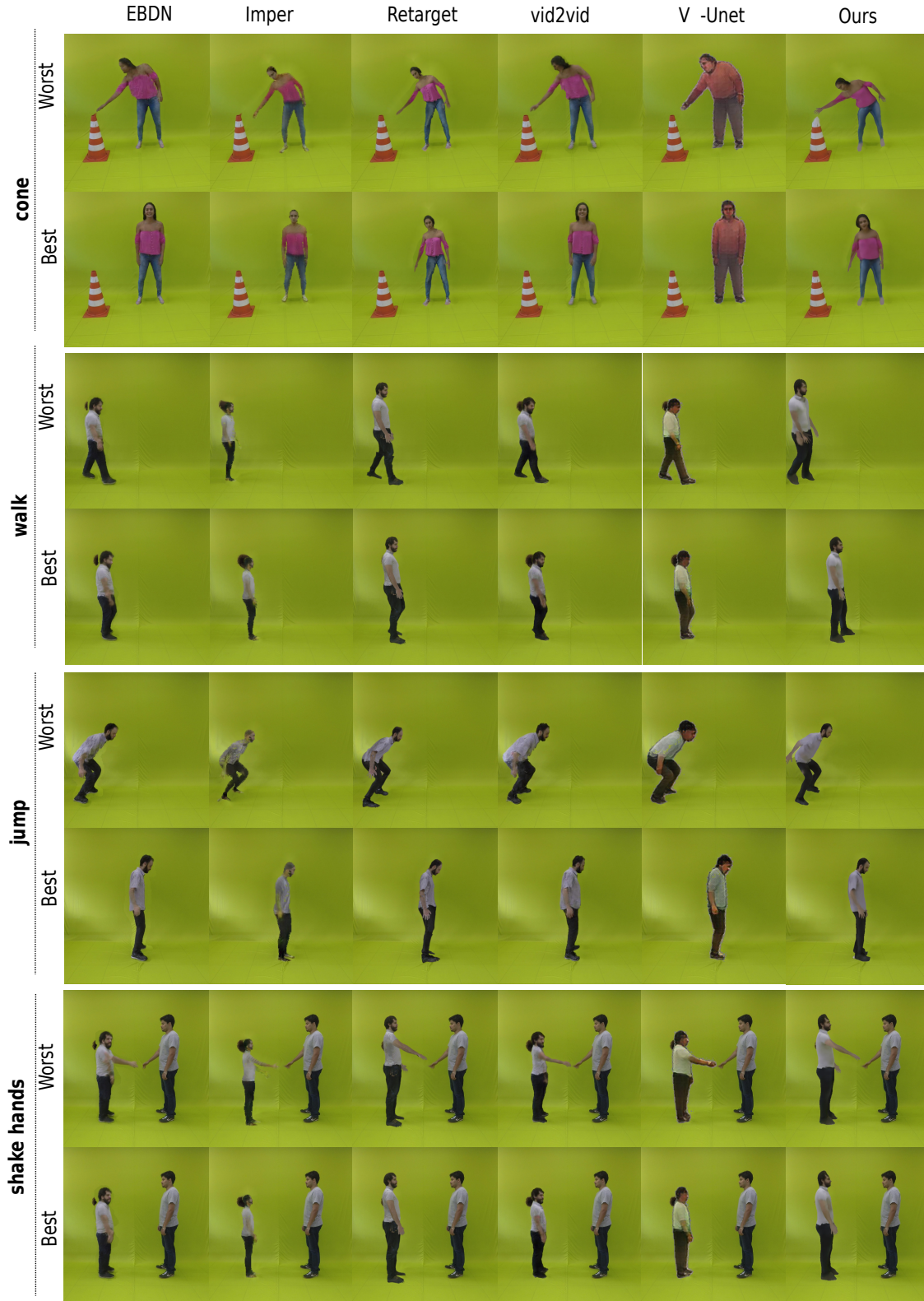


Figure 3: **Qualitative comparison in the controlled dataset.** Movements are represented in the rows. The results for each competitor are represented in the columns.

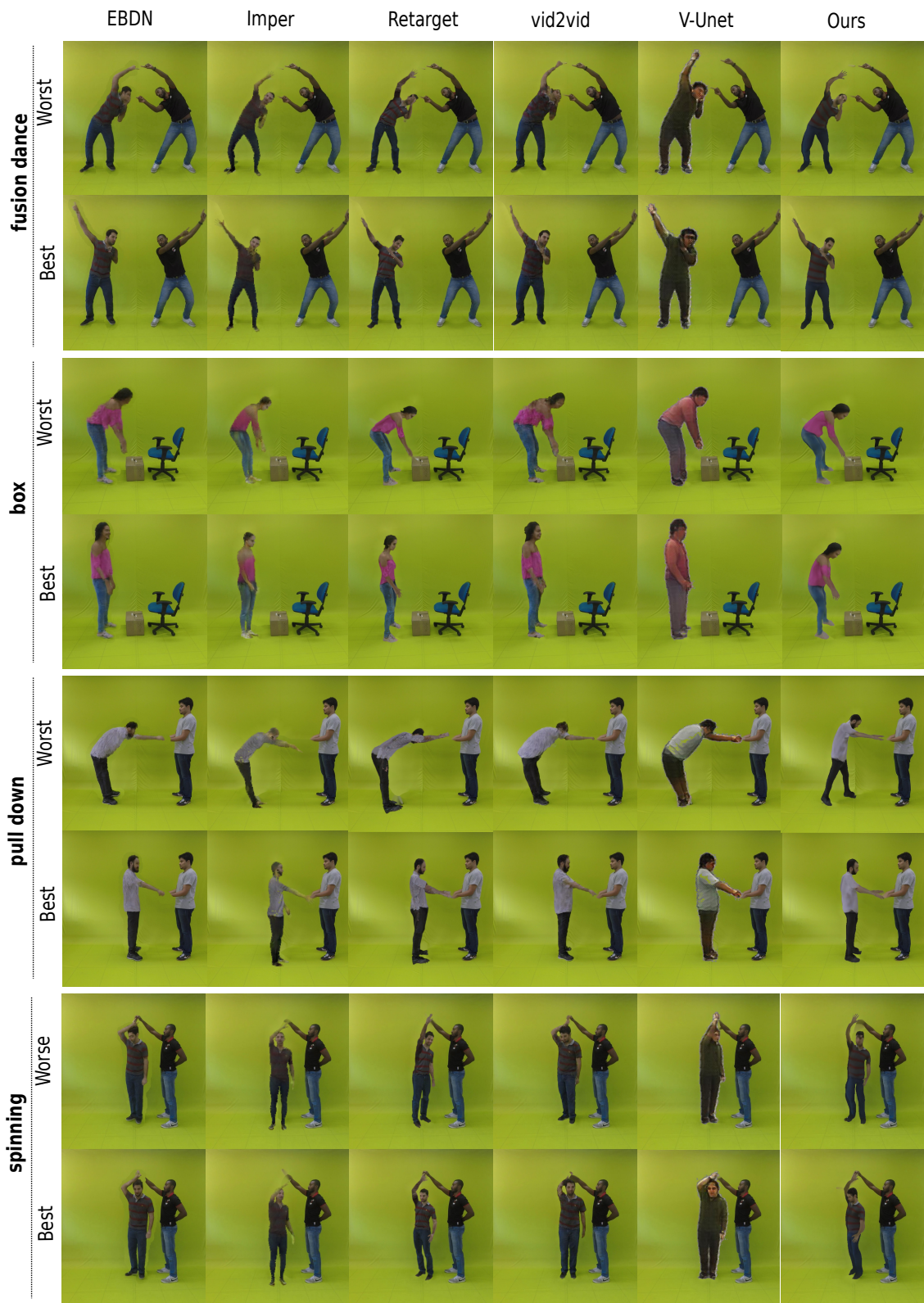


Figure 4: **Qualitative comparison in the controlled dataset.** Movements are represented in the rows. The results for each competitor are represented in the columns.