

Figure 18: Glyph nearest neighbors in curve space.

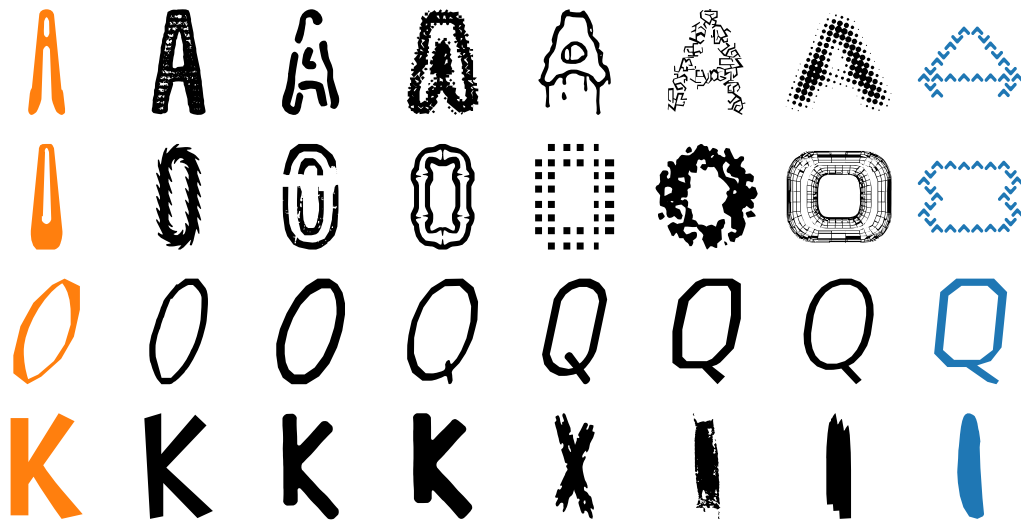


Figure 19: Interpolations between fonts in curve space.

Input	Full model	No surface	No alignment	Simple templates	Chamfer
L					
R					
G					
P					
E					
M					

Figure 20: Distance field loss comparisons.

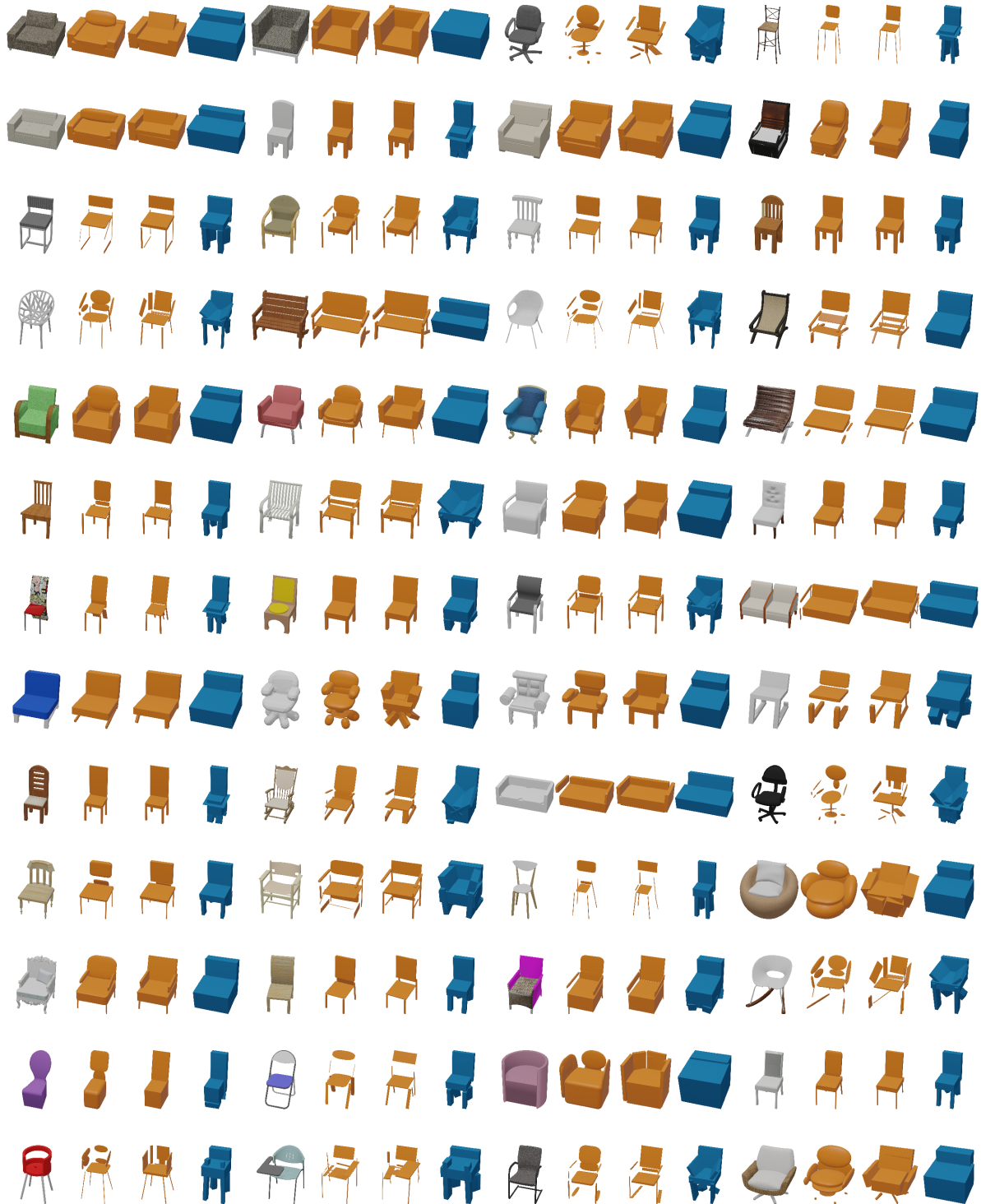


Figure 21: Abstractions of ShapeNet chairs. From left to right, we show the input, our rounded cuboid abstraction, our cuboid abstraction, and the cuboid abstraction of [41]



Figure 22: Cuboid abstractions of ShapeNet airplanes. We show our abstraction (orange) next to each input.