

Supplementary Material

A. More Qualitative Examples of Style Transfer

Figure 1 shows additional examples of image style transfer to supplement Section 4.3 in the main submission. BN+SRM successfully transfers to the target style while preserving meaningful styles of the content image, producing improved results compared to BN or BN+SE.

B. More Examples of Top-activated Images and Correlation Matrix

We provide further examples of top-activated images and correlation matrix in Figure 2 to supplement Section 5.3 in the main submission. In terms of top-activated images, we retrieve images that produce highest channel weights of first 64 channels.

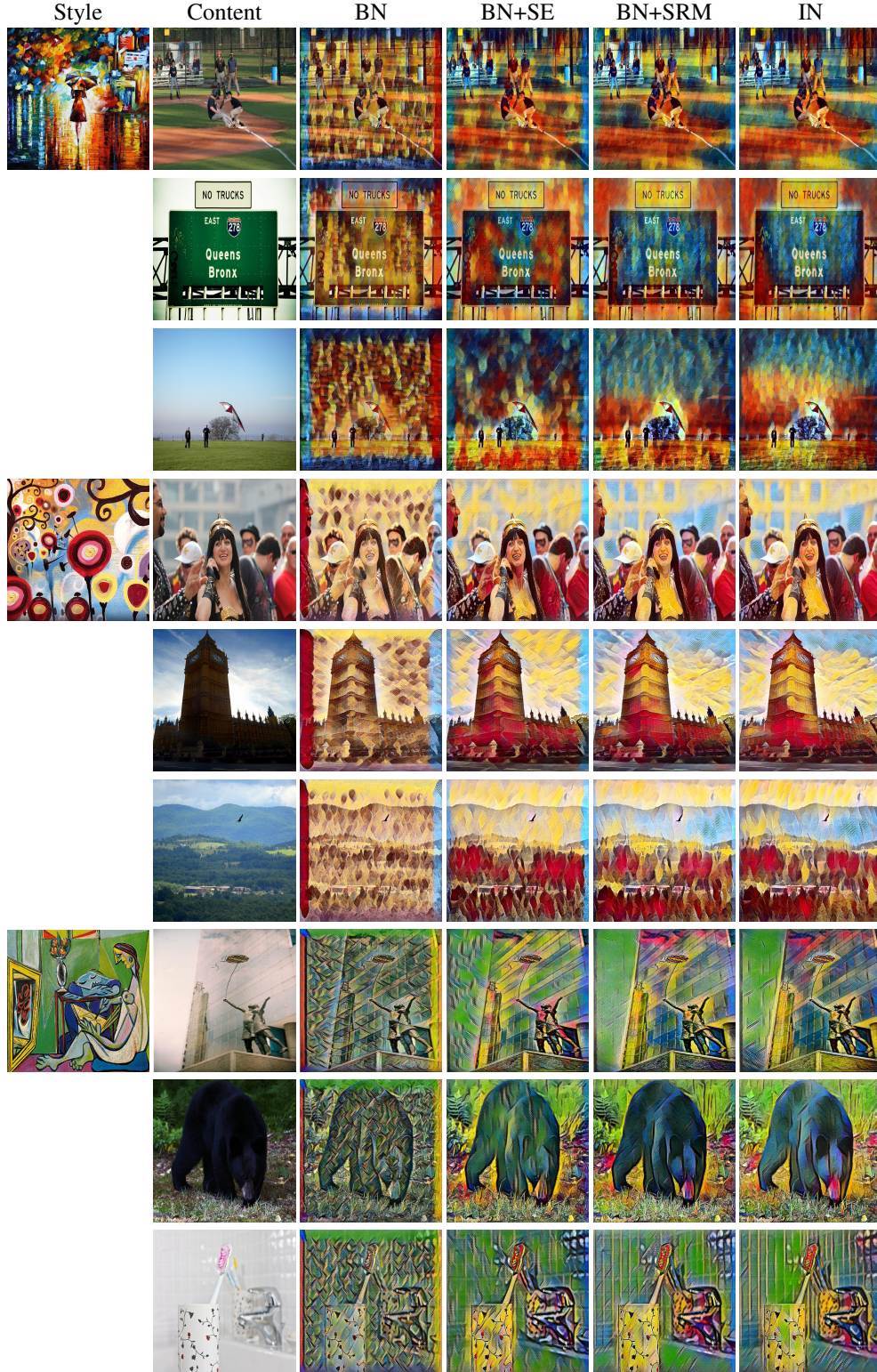


Figure 1: Additional examples of style transfer. While BN results in vague boundaries between areas along with severe artifacts and BN+SE alleviates them to some degree, BN+SRM yields considerably higher stylization quality which is comparable to IN.

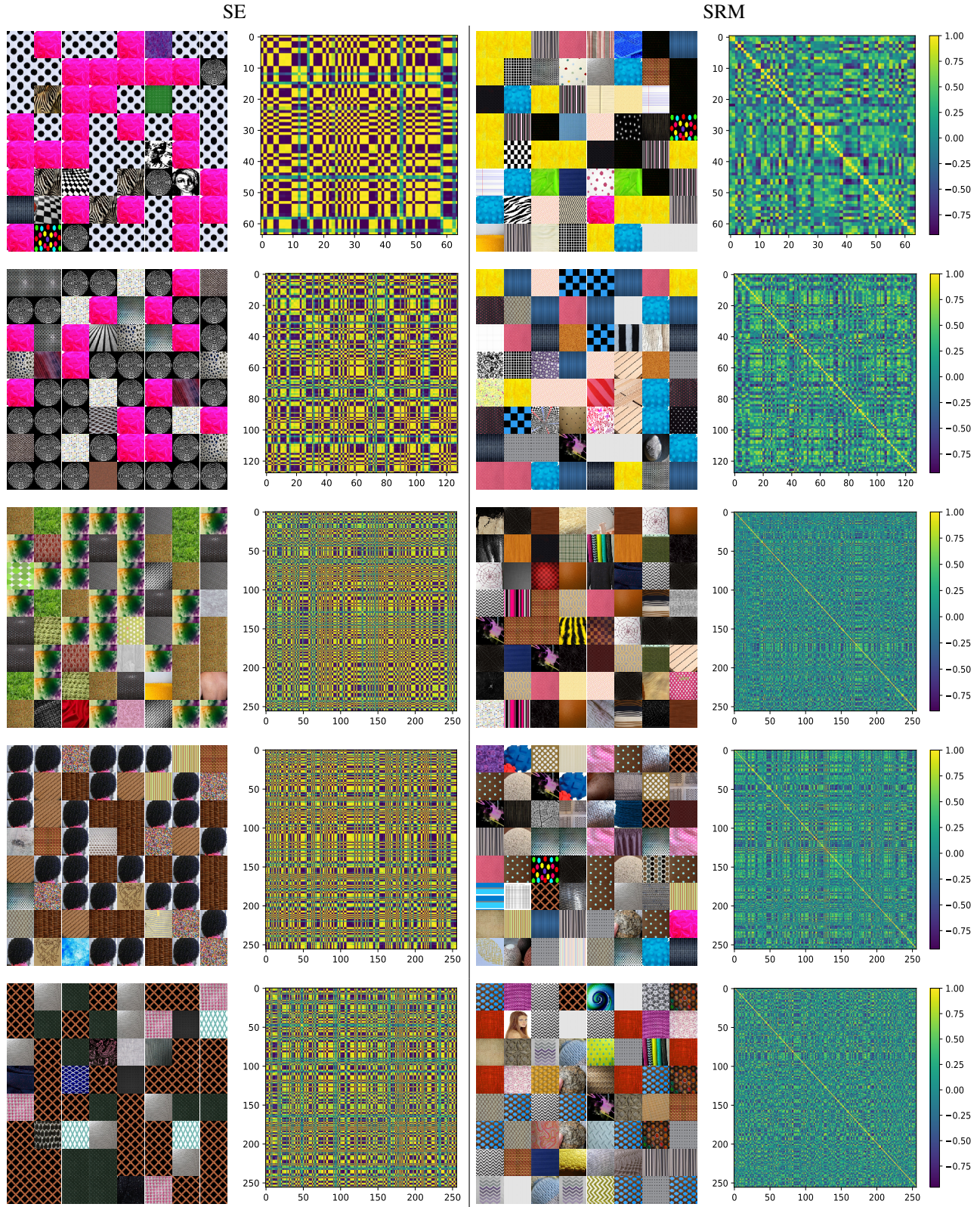


Figure 2: The top-activated images of the first 64 channels in channel weights and the correlation matrix between channel weights of ResNet-56 on Describable Texture Dataset. Each row (from top to bottom) corresponds to conv2 5, conv3 6, conv4 4, conv4 5, and conv4 6, respectively.