

## Supplementary Material: Structure-from-Motion Revisited

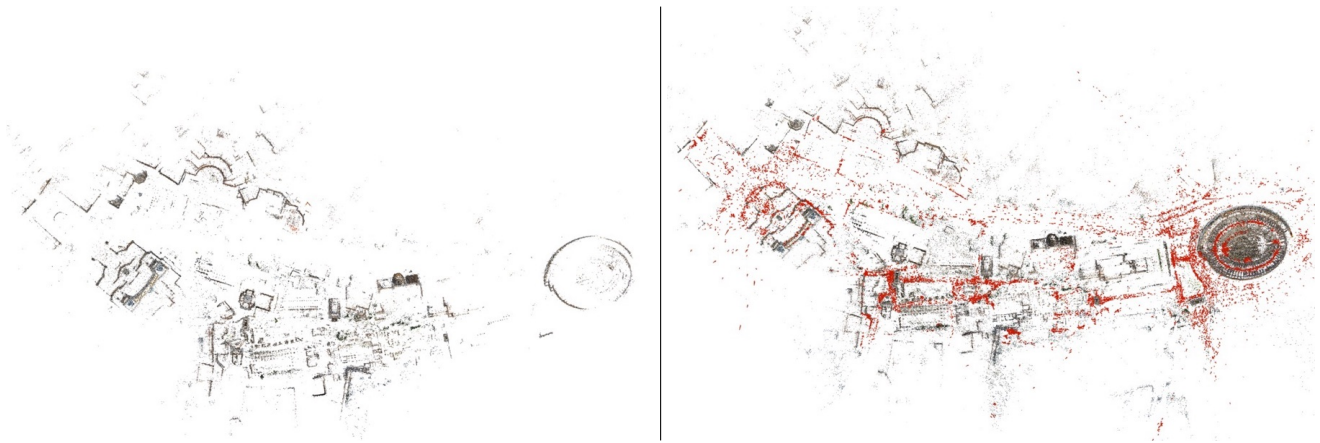


Figure 1. Results for Rome using *VisualSFM* (left) and *Ours* (right).

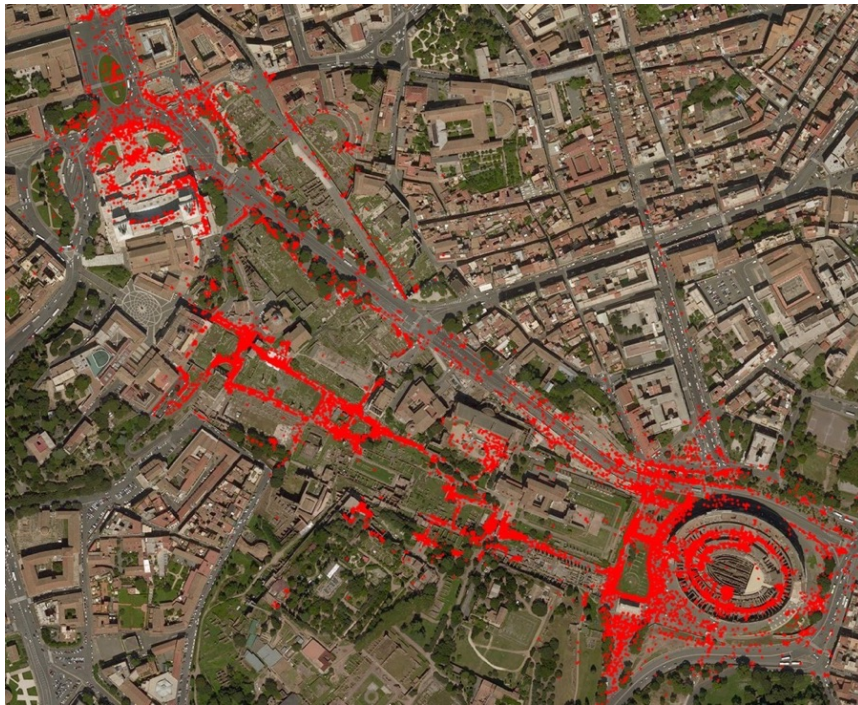


Figure 2. Camera locations of our result accurately align with with rectified aerial image.



Figure 3. Results for Alamo using *Bundler* (left), *VisualSFM* (middle), and *Ours* (right).



Figure 4. Results for Ellis Island using *Bundler* (left), *VisualSFM* (middle), and *Ours* (right).



Figure 5. Results for Gendarmenmarkt using *Bundler* (left), *VisualSFM* (middle), and *Ours* (right).



Figure 6. Results for Madrid Metropolis using *Bundler* (left), *VisualSFM* (middle), and *Ours* (right).

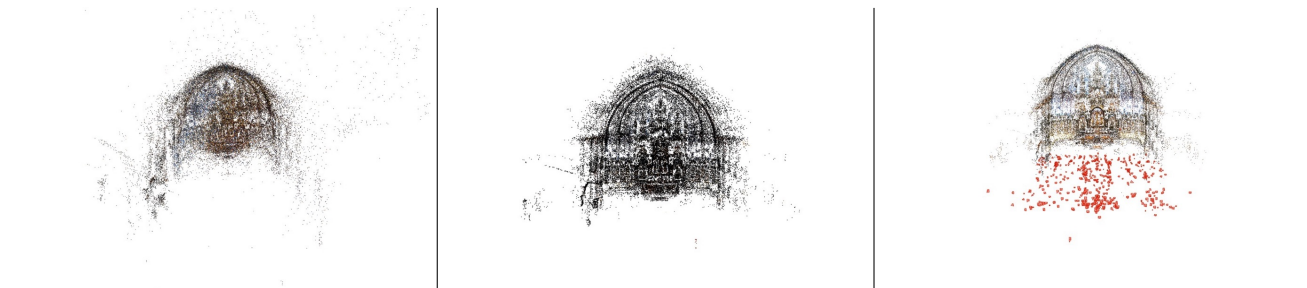


Figure 7. Results for Montreal Notre Dame using *Bundler* (left), *VisualSFM* (middle), and *Ours* (right).



Figure 8. Results for NYC Library using *Bundler* (left), *VisualSFM* (middle), and *Ours* (right).



Figure 9. Results for Piazza del Popolo using *Bundler* (left), *VisualSFM* (middle), and *Ours* (right).

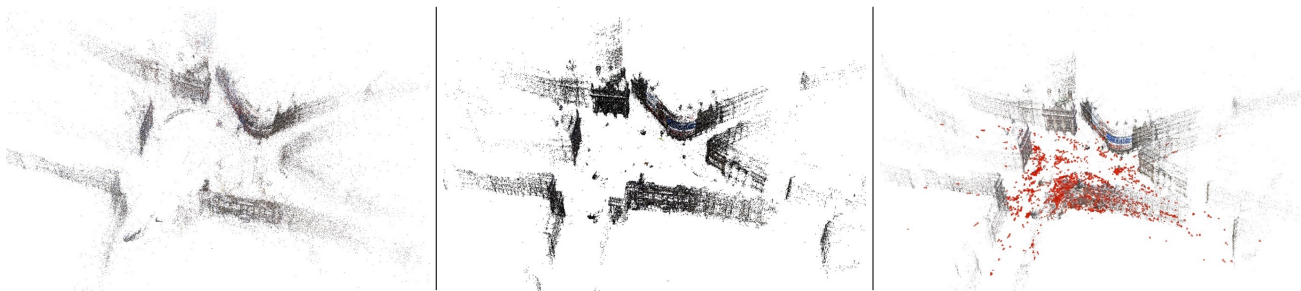


Figure 10. Results for Picadilly using *Bundler* (left), *VisualSFM* (middle), and *Ours* (right).

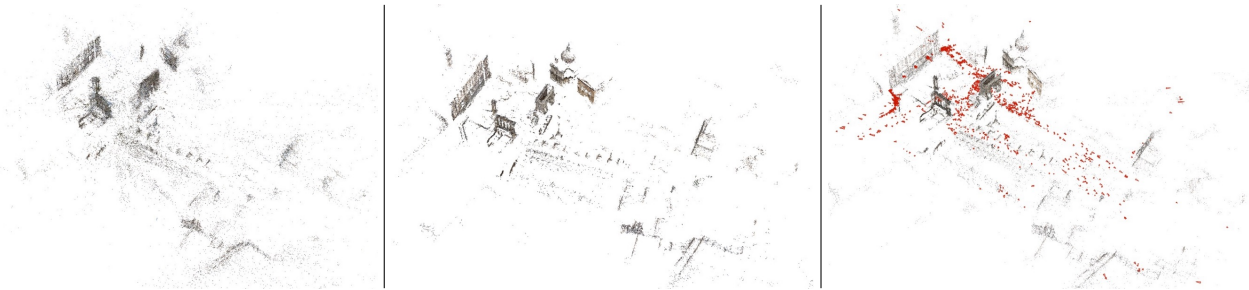


Figure 11. Results for Roman Forum using *Bundler* (left), *VisualSFM* (middle), and *Ours* (right).

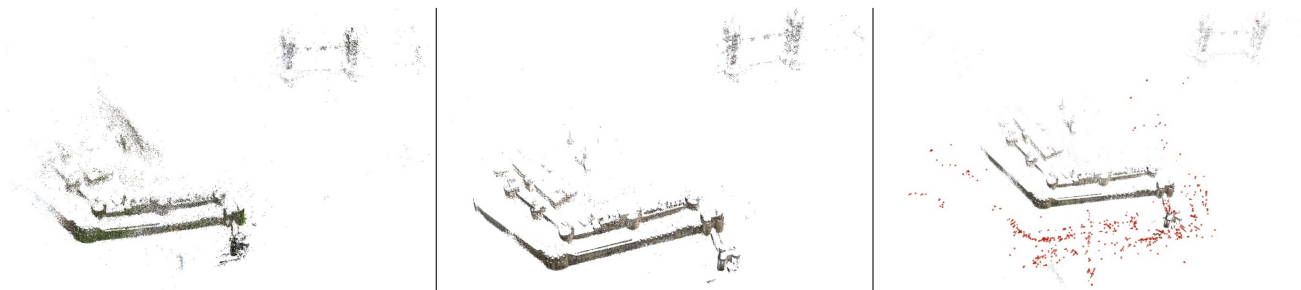


Figure 12. Results for Tower of London using *Bundler* (left), *VisualSFM* (middle), and *Ours* (right).





Figure 13. Results for Trafalgar using *Bundler* (left), *VisualSFM* (middle), and *Ours* (right).



Figure 14. Results for Union Square using *Bundler* (left), *VisualSFM* (middle), and *Ours* (right).

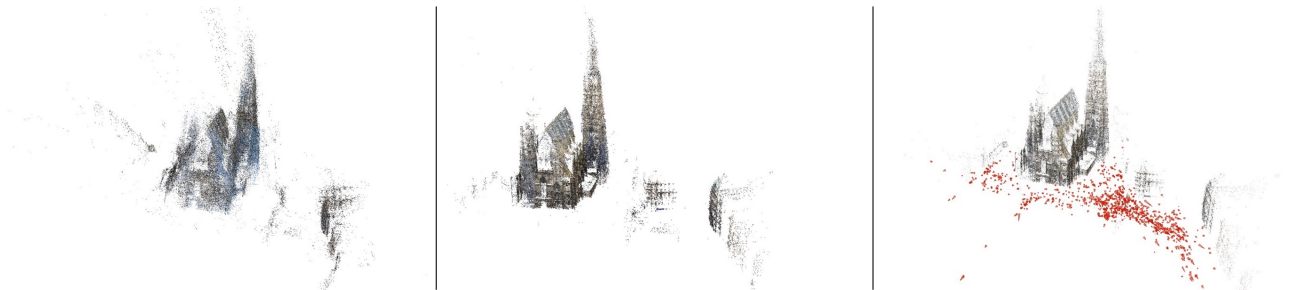


Figure 15. Results for Vienna Cathedral using *Bundler* (left), *VisualSFM* (middle), and *Ours* (right).

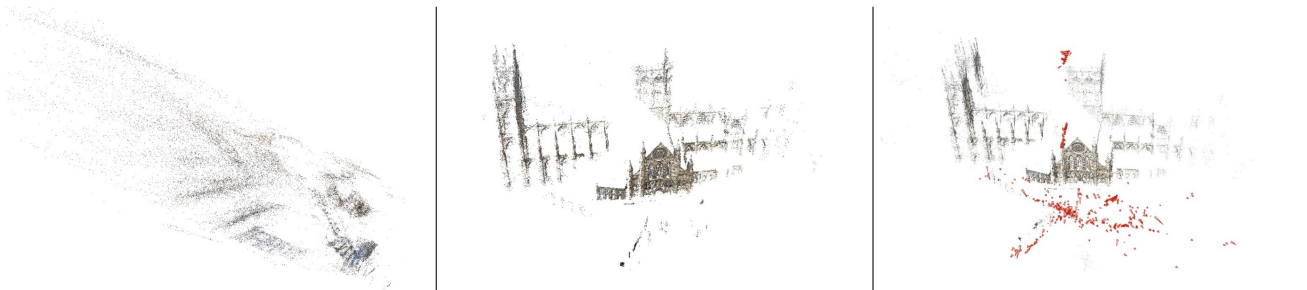


Figure 16. Results for Yorkminster using *Bundler* (left), *VisualSFM* (middle), and *Ours* (right).