

Semantic Visual Localization

Johannes L. Schönberger¹

Marc Pollefeys^{1,3}

Andreas Geiger^{1,2}

Torsten Sattler¹

¹Department of Computer Science, ETH Zürich

²Autonomous Vision Group, MPI Tübingen

³Microsoft

{jsch,pomarc,sattlert}@inf.ethz.ch

andreas.geiger@tue.mpg.de

Abstract

Robust visual localization under a wide range of viewing conditions is a fundamental problem in computer vision. Handling the difficult cases of this problem is not only very challenging but also of high practical relevance, e.g., in the context of life-long localization for augmented reality or autonomous robots. In this paper, we propose a novel approach based on a joint 3D geometric and semantic understanding of the world, enabling it to succeed under conditions where previous approaches failed. Our method leverages a novel generative model for descriptor learning, trained on semantic scene completion as an auxiliary task. The resulting 3D descriptors are robust to missing observations by encoding high-level 3D geometric and semantic information. Experiments on several challenging large-scale localization datasets demonstrate reliable localization under extreme viewpoint, illumination, and geometry changes.

1. Introduction

Visual localization is the problem of determining the camera pose of one or multiple query images in a database scene. This problem is highly relevant for a wide range of applications, including autonomous robots [58] and augmented reality (AR) [32, 43], loop closure detection [18, 20, 81] and re-localization [38, 51] in SLAM [36, 46], and Structure-from-Motion (SfM) [54, 57] systems.

There are three types of approaches to the localization problem: *Structure-based* methods represent the scene by a 3D model and estimate the pose of a query image by directly matching 2D features to 3D points [11, 37, 51, 66, 80] or by matching 3D features to 3D points, if depth information is available [30, 81]. *Image-based* methods model the scene as a database of images [14, 18, 53, 65, 68]. They use image retrieval techniques to identify the database images most relevant to the query, which are then used to estimate the pose from 2D-3D matches. *Learning-based* methods represent the scene by a learned model, which either predicts matches for pose estimation [7, 8, 59, 69] or directly regresses the pose [29, 70]. This paper follows the structure-based ap-

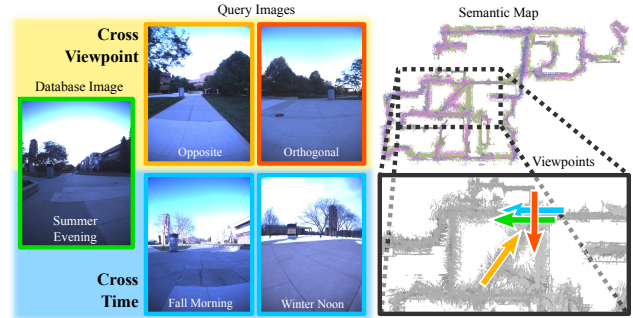


Figure 1: We propose a semantic localization technique which is able to match features over extreme appearance changes across viewpoints and time. In this example, the database contains only images captured in summer and from one particular viewpoint, yet our method correctly localizes images with strong viewpoint, illumination, and seasonal changes.

proach and represents the database scene by a semantic 3D map. Given a query image together with its semantic segmentation and depth map, we construct a 3D semantic query map from which we extract local descriptors. Using 3D-3D matches between query and database descriptors, we align the maps to obtain the query pose estimate.

All of the approaches, including ours, explicitly or implicitly measure the (visual or structural) similarity between a query image and the database scene representation. Thus, they assume that the query and database images depict the scene under sufficiently similar conditions in viewpoint, illumination, and scene geometry. As shown in Fig. 1, these assumptions are easily violated in practice. Different illumination within a single day causes strong variation in appearance while seasonal changes significantly affect the scene geometry. Similarly, strong viewpoint changes lead to severe perspective distortion and often result in little structural overlap between the query and the database. Yet, robustness against such changes is important, e.g., for AR devices or robots to re-localize robustly in a changing environment.

The main challenge in this setting is successful data association between the query and the database. Existing image- and structure-based methods use local features designed to be discriminative, e.g., [30, 60, 61, 81], such that

descriptors of the same physical point are close in descriptor space while unrelated points are far apart. However, strong changes in viewing conditions, e.g., in appearance or geometry, demand for an invariant embedding which contradicts the discriminative learning objective of these approaches. In theory, such invariance could be implemented by learning a more complex descriptor comparison function [23, 78]. Yet, in practice, such methods do not scale well, as they require an expensive pairwise comparison of descriptors.

To overcome this limitation, we present a novel approach to descriptor learning that is based on a generative rather than a discriminative model. The core idea is to learn an embedding in Euclidean space that retains all information required to recover the scene appearance under different viewing conditions. Our embedding encodes high-level 3D geometric and semantic information and thus allows us to handle strong viewpoint changes as well as moderate changes in scene geometry, e.g., due to seasonal changes. More specifically, we propose to learn a generative descriptor model based on the auxiliary task of 3D semantic scene completion. Given a partially observed scene, the goal of this auxiliary task is to predict the complete scene. A key insight of our paper is that semantics provide strong cues for the scene completion task, resulting in drastically improved descriptors. We show that our descriptors can be learned in a self-supervised manner without explicit human labeling. The learned descriptors generalize to new datasets and different sensor types without re-training.

In summary, this paper makes the following **contributions**: (i) We propose a novel approach to visual localization based on 3D geometric and semantic information. (ii) We formulate a novel method to the descriptor learning problem based on a generative model for 3D semantic scene completion. The latent space of our variational encoder-decoder model serves as our descriptor and captures high-level geometric and semantic information. (iii) We demonstrate the effectiveness of our approach on two challenging problems: Accurate camera pose estimation under *strong viewpoint changes* and *illumination/seasonal changes*. Even without semantics, our approach outperforms state-of-the-art baselines by a significant margin, demonstrating the power of generative descriptor learning in localization. Incorporating semantic information leads to further improvements. To the best of our knowledge, ours is the first approach which reliably estimates accurate camera poses under such challenging conditions. In addition, our method generalizes to new datasets with different types of sensors without re-training.

2. Related Work

Traditional Approaches. Most existing large-scale localization methods use local features such as SIFT [42] to establish 2D-3D matches between features in a query

image and points in a SFM model [37, 38, 51, 66, 80]. These correspondences are then used to estimate the camera pose. Descriptor matching is typically accelerated using prioritization [38, 51] or efficient matching schemes [39, 43]. Co-visibility information [37, 51], an intermediate image retrieval step [26, 53], and geometric outlier filtering [11, 66, 80] aid in handling ambiguous features arising at large scale. If available, depth information can be used to remove perspective distortion effects before descriptor extraction [74, 79] or to directly extract descriptors in 3D [30, 48, 81]. However, even depth-based approaches fail in the presence of strong viewpoint or appearance changes due to a lack of visual or structural overlap. In contrast, we make our approach more robust to such drastic changes by learning a novel 3D descriptor specifically for these conditions. Recent learning-based methods for visual localization either learn to associate each pixel to a 3D point [7, 8, 59, 69] or learn to directly regress the camera pose from an image [29, 70]. The principal drawback of both approaches is that they need to be retrained for each dataset. In contrast, our learned semantic descriptors generalize across datasets.

Semantic Localization. A popular strategy for semantic localization is to focus on features found on informative structures [34, 45] and to re-weight or discard ambiguous features [33]. Similarly, individual features [34] or Bag-of-Words representations [2, 62] can be enhanced by combining local features with semantics as a post-processing step. In contrast, our approach learns to combine semantics and geometry into a single and more powerful descriptor.

An alternative strategy to semantic localization is to use high-level features such as lane markings [58], object detections [3, 4, 49, 67], discriminative buildings structures [72], or the camera trajectory of a car [10]. These approaches need object databases or maps containing the same types of objects, which either requires careful manual annotation [58] or pre-scanning of objects [49]. In addition, the feature extraction and matching process is often a complex and hand-crafted solution tailored to specific objects [3, 4]. In contrast, our model learns a general semantic scene representation in a self-supervised fashion from data, eliminating the need for hand-crafted solutions or manual labeling.

Descriptor Learning. The traditional approach to descriptor learning in the general setting is to learn a discriminative embedding in Euclidean space from corresponding 2D patch samples [9, 23, 35, 60, 61]. The embedding function should produce similar descriptors for patches depicting the same physical structure and dissimilar descriptors for unrelated patches. The same approach also applies to 3D voxel volumes [81] and point clouds [30]. Typically, these descriptors are learned for local patches or local volumes in order to handle (partial) occlusions. In contrast, we are interested in learning descriptors with a larger spatial context in order to obtain a more powerful, high-level understand-

ing of the scene. Consequently, we learn 3D descriptors for relatively large 3D semantic voxel volumes. The main challenge in our setting is that descriptors in the query and database map only have partial structural overlap due to their large spatial context and due to strong occlusions when matching under extreme viewpoint changes. We thus exploit the auxiliary task of semantic completion [63] to learn an embedding that is invariant to occlusions. In contrast to learning complex matching functions [23, 78] that are expensive to compute, our descriptor is embedded in Euclidean space and can be matched efficiently at large scale.

One application of our approach is localization under illumination and seasonal changes. There exists work on training local [41] or image-level [1, 14, 68] descriptors that are robust under such changes. Due to the challenge of obtaining accurately posed images under different conditions [52], these approaches are trained on data with little viewpoint changes, e.g., from webcams [14]. Thus, such approaches are not very robust under viewpoint variations. In contrast, we explicitly train on data with strong viewpoint changes and demonstrate that our model also generalizes to illumination and seasonal changes.

Semantic Model Alignment. The key idea of our method is to use the geometry and semantics to establish correspondences for pose estimation. Thus our approach is also related to methods aligning 3D models through semantic features [15, 16, 67, 77]. Cohen et al. [15, 16] use semantic features to stitch visually disconnected SFM models. Toft et al. [67] use a similar idea for camera pose refinement in localization. Yu et al. [77] use 3D object detections as features in a semantic ICP approach. These approaches use hand-selected semantic features, which are often ambiguous, e.g., there might be multiple cars in the scene. Hence, the association problem is solved either via brute-force search [16] or by assuming an initial alignment [15, 67, 77]. In contrast, our approach learns descriptors with a more general semantic scene understanding that can be matched efficiently at large scale.

Aerial-Ground Localization. A related problem to ours is tackled by work on matching ground-level imagery against overhead maps to obtain coarse location estimates under orthogonal viewpoint changes [13, 40, 71, 73]. However, these methods are specific to this problem and cannot be used for accurate ground-level to ground-level localization, which is the focus of this paper.

3. Semantic Visual Localization

In this section, we describe our proposed method for semantic visual localization. The input to our system is a set of color images with associated depth maps $\mathcal{I} = \{I_i\}$ and, for database images, their respective camera poses $\mathcal{P} = \{P_i\}$ with $P_i \in SE(3)$. Given the subset of database

images \mathcal{I}_D and their camera poses \mathcal{P}_D , we create a global 3D semantic map M_D in a pre-processing step. For a query \mathcal{I}_Q of one or multiple images, we compute a local 3D semantic map M_Q and establish 3D-3D matches between M_Q and M_D to determine the unknown query poses \mathcal{P}_Q . This localization procedure should be robust to extreme viewpoint and illumination changes between the database and the query images. While lower-level radiometric and geometric information typically varies significantly under different viewpoints and illumination, semantic information is comparatively invariant to these types of transformations through higher-level scene abstraction. This is the main motivation for our proposed semantic visual localization method which comprises the following three steps: In an offline step, we learn robust local descriptors by exploiting semantic scene completion as an auxiliary task. During on-line operation, we use these local descriptors to establish 3D-3D matches between the query and database map. The matches are then used to estimate an alignment between the two maps, which defines a pose estimate for the query. In the following, we first describe how we construct the 3D semantic maps from which we learn and extract our proposed descriptors. We then explain the proposed descriptor matching and pose estimation stages.

3.1. Semantic Segmentation and Fusion

We first compute dense pixelwise semantic segmentations $\mathcal{S} = \{S_i\}$ for all input images, where each pixel of S_i is assigned a semantic class label $l \in \{1, \dots, L\}$. Next, we fuse the images into semantic 3D voxel maps M_D and M_Q for the database and query images [22, 25]. Each voxel in the semantic 3D maps takes one of $L + 2$ labels, i.e., a voxel is either occupied with one of the L semantic classes or it is labeled as free space L_F or unobserved space L_U . The task of localization is to find the transformation $P \in SE(3)$ that best aligns a query to the database map.

Given a robust semantic classifier, e.g., trained specifically for different seasons, the semantic maps are inherently invariant to large illumination changes and geometric variations up to the voxel resolution. Note that using semantics, it is easy to determine reliable classes and, e.g., to ignore dynamic objects such as cars. While semantics abstract high-level scene information, large spatial context is needed for an unambiguous, instance-level understanding of the scene. However, a larger spatial context inherently leads to missing observations due to occlusions. For example, in the case of different viewpoints, the volumetric overlap between the query and database maps may be very small. In the extreme case of opposite viewing directions, there might be no structural overlap between the two maps. Hence, one main challenge for our pipeline is to robustly find matches between the query and database maps in the absence of common observations. In the following, we de-

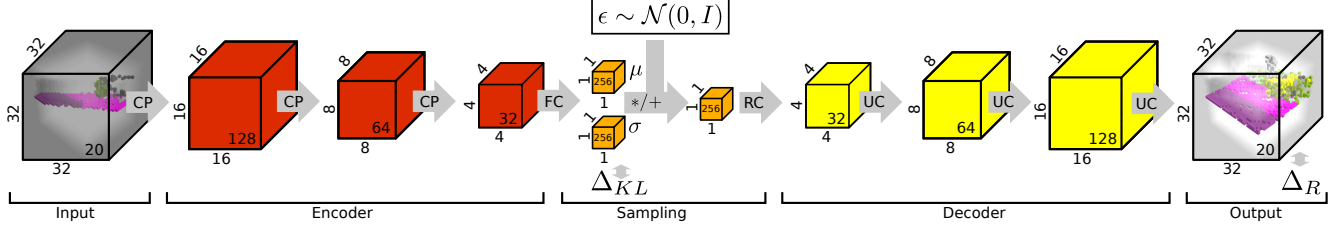


Figure 2: **Variational Encoder-Decoder Architecture.** Legend: CP = Convolution + Pooling, FC = Fully Connected, RC = Reshape + Convolution, UC = Upsampling + Convolution, Δ_{KL} = KL Divergence wrt. $\mathcal{N}(0, I)$, Δ_R = Reconstruction Loss. The numbers at the bottom right of each block denote the number of feature channels. The network takes incomplete semantic observations as input (left) and predicts completed semantic subvolumes (right). The latent code μ forms our descriptor.

scribe how to learn an encoding of the database and query maps M_D and M_Q that is invariant to such missing observations through a semantic understanding of the scene.

3.2. Generative Descriptor Learning

The underlying goal of our localization method is to estimate the transformation P from 3D-3D matches between M_D and M_Q . Since the query and database maps typically differ in size and coverage, we find correspondences between subvolumes $v_D \in M_D$ and $v_Q \in M_Q$ of size V^3 . To establish these correspondences, we learn a function that recognizes similar subvolumes. This function should be invariant to missing observations due to the relatively large size of the subvolumes, different viewpoints and moderate geometric deformations between the query and database map, dynamic objects in the scene, sensor noise, etc. In particular, the function should identify the same object even when seen from different viewpoints and under different illumination. We will show that semantic scene understanding is key to learning such an invariant function.

The two traditional approaches to solving this problem are to either learn a matching function $f(v_D, v_Q)$ [23, 78] or an embedding $f(v)$ [30, 81]. The latter approach aims to find an encoding function that maps the same subvolumes to similar points in (Euclidean) space. While a learned matching function in theory has more discriminative power, it also imposes high computational cost as it requires exhaustive pairwise comparisons, which is intractable at large scale. Thus, we learn an embedding that is evaluated only once per subvolume rather than per pair of subvolumes.

More concretely, we learn an encoding function $f(v) \in \mathbb{R}^N$ that maps a subvolume to a lower-dimensional descriptor which jointly encodes the scene semantics and geometry. To recognize the same object from different or even opposing viewpoints, this encoding must contain enough information to hallucinate the unobserved parts of the subvolume. Towards learning such a robust encoding, we define the auxiliary task of semantic scene completion. This auxiliary task is described by the function $h(v)$ that hallucinates the geometry and the semantics of the unobserved parts of its input. We use a 3D variational encoder-decoder $h(v) = g(f(v))$,

where f is a neural network which encodes the incomplete subvolume and g is a neural network which hallucinates the complete subvolume. To learn the distribution of the space of subvolumes and to ensure that the same physical subvolumes map to nearby encodings in Euclidean space, we enforce a Gaussian prior on $(\mu, \sigma) = f(v)$ using variational sampling. Our formulation is similar to the original variational auto-encoder [31] with the difference that we encode an incomplete sample and decode the complete sample.

For learning h , we generate training data using volumetric fusion. We first fuse all training images \mathcal{I}_T into a volumetric representation. This yields a nearly *complete* representation M_T of the scene. In addition, we create *incomplete* volumetric representations M_{T_i} for each image $I_{T_i} \in \mathcal{I}_T$ individually. During stochastic gradient descent, we randomly sample incomplete subvolumes \bar{v} in $\{M_{T_i}\}$ and find its corresponding complete subvolume \hat{v} in M_T . The task of h is to denoise the observed parts and to hallucinate the unobserved parts of the incomplete subvolume. The learning objective is the semantic reconstruction loss $\Delta_R = E(h(\bar{v}), \hat{v})$ using the categorical cross entropy measure $E(\cdot, \cdot)$. Together with the Gaussian prior, the overall training objective is defined as $\Delta = \Delta_R + \Delta_{KL}$ where Δ_{KL} measures the Kullback-Leibler divergence between the latent code f and $\mathcal{N}(0, I)$. The architecture of h is illustrated in Fig. 2 and examples are shown in Fig. 3.

We learn the model for a fixed voxel size using the same orientation for the incomplete and complete subvolumes \bar{v} and \hat{v} . For additional data augmentation and robustness to noise, we jointly rotate the subvolumes using random orientations and perturb the occupancy of the incomplete subvolumes using dropout [64]. Note that no human labeling is required since we employ pre-trained semantic classifiers for this task. As described next, our semantic localization pipeline only uses the encoder part f of the full model h .

3.3. Bag of Semantic Words

The previous section described how to learn a discriminative function f that maps semantic subvolumes v to low-dimensional latent codes μ . We use this function to create a *Bag of Semantic Words* that encodes the semantic

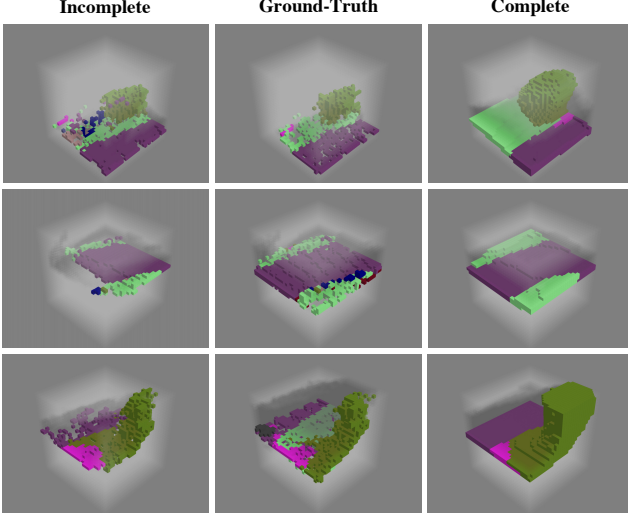


Figure 3: Example input \bar{v} and output $h(\bar{v})$ from the KITTI dataset for our semantic completion auxiliary task. The incomplete input is completed using our encoder-decoder network h , while the multi-view fusion \hat{v} is the ground-truth.

3D scene layout of a map. The bag of semantic words $\mathcal{F}(M) = \{f(v_j)\}$ with $j = 1 \dots |M|$ is defined as the set of descriptors $f(v_j)$ computed for all occupied subvolumes v_j in M . We consider a subvolume to be occupied if at least one voxel within the subvolume (not necessarily the center voxel) is occupied. Note that given an *incomplete* map, the bag of semantic words is a description of its *complete* semantic scene layout. Our localization pipeline uses this representation to robustly match the query map to the database map, as detailed in the following.

3.4. Semantic Vocabulary for Indexing and Search

We establish correspondence between subvolumes in the query and database using nearest neighbor search in the descriptor space $f(v) \in \mathbb{R}^N$ using the Euclidean metric. For efficient semantic word matching, we build a semantic vocabulary [47] in an offline procedure using the bag of semantic words of the training dataset. We quantize the space of descriptors $\mathcal{F}(M_T)$ using hierarchical k-means and a N_B -dimensional Hamming embedding [27]. We index all semantic words of the database map $\mathcal{F}(M_D)$ into the resulting vocabulary tree, which serves as an efficient data structure for matching. To find matches between a given query image and the database, we find the top $K = 5$ nearest database words \mathcal{D} for each query word $f(v_j) \in \mathcal{F}(M_Q)$ by traversing the vocabulary tree and finding nearest neighbors in Hamming space. Since our descriptors are *rotation variant*, as they are trained on aligned subvolumes (see Section 3.2), and, generally, we have no *a priori* knowledge about the orientation of the query, we perform the same query for a fixed set of orientation hypotheses $\theta \in SO(3)$ while the database remains fixed. The set of putative matches $\mathcal{D}(\theta)$

for the different orientations provide evidence for the location of the query. The next section details how to accurately localize the query based on this evidence using a joint semantic map alignment and verification.

3.5. Semantic Alignment and Verification

Given the putative matches $\mathcal{D}(\theta)$ from Section 3.4, we seek to find the transformation $P \in SE(3)$ that best aligns the query to the database map. Specifically, a good alignment is established if both the geometry (i.e., occupancy) as well as the semantics agree. Due to the rotation variance of our descriptors, a single 3D-3D match between the query and the database defines a transformation hypothesis P , which is composed of the rotation defined by θ and the translation $t \in \mathbb{R}^3$ defined by the spatial offset of the corresponding subvolumes. We exhaustively enumerate all transformation hypotheses defined by the matches. To verify a single transformation hypothesis, we then align the query to the database map using P and count the number of correctly aligned voxels of the query map. A correctly aligned voxel matches both in terms of geometry and semantics, i.e., an occupied voxel in the aligned query map must also be occupied in the spatially closest voxel in the database map. In addition, the spatial distance of their voxel centers must be smaller than κ and their semantic class labels must match exactly. We ignore unobserved voxels in both the query and the database map. To further refine the alignment, we use the iterative closest point algorithm [6], where closest points are defined as the set of correctly aligned voxels in the previous iteration. Finally, we rank the transformation hypotheses by the ratio τ of correctly aligned over occupied voxels in the query map. The top-ranked hypotheses define the query pose estimates as the output of our system.

4. Experiments

In this section, we compare our method to the state-of-the-art techniques on several large-scale localization benchmark datasets. The following sections explain the setup and results of our experiments in detail.

4.1. Datasets

KITTI. We evaluate the localization performance in the setting of extreme viewpoint changes on the KITTI odometry dataset [21] comprising 11 sequences with ground-truth poses. 6 of these sequences contain loops with extreme viewpoint changes. First, we evaluate on the traditional loop closure scenario including all images independent of viewpoint change. For this, we construct the database map from all images, while the query map is constructed from a single image. In addition, we also perform experiments when the database only contains images from significantly different viewpoints (90° or 180°) and under different ap-

pearance (Fig. 4). In this case, all images with similar view-point are excluded from the database.

NCLT. In addition, we use the NCLT dataset [12] to evaluate the localization performance under extreme appearance changes caused by short-term illumination changes over several hours and long-term seasonal changes over several months. The dataset was acquired biweekly during 1.5 hour sessions over the course of 15 months and we selected 4 sequences that span the different modalities of daytime (morning, midday, afternoon, evening), weather (sunny, partially cloudy, cloudy), (no) foliage, and (no) snow.

4.2. Setup

For all evaluations, we compute gravity-aligned semantic maps by using either the integrated inertial sensors (NCLT) or through vanishing point detection in the images (KITTI). This reduces the space of orientation hypotheses θ to the rotation around the gravity axis. We use the raw output of an off-the-shelf semantic classifier [76] trained on the Cityscapes [17] dataset. This classifier segments the scene into $L = 19$ semantic classes and we only consider the maximum activation per pixel and discard any pixels with *sky* labels. We adapted the volumetric fusion approach by Hornung et al. [25] using (multi-view) stereo depth maps [24] (KITTI) and sparse LIDAR measurements (NCLT) for efficient large-scale semantic fusion. We extract subvolumes v of size 32^3 at a fixed voxel resolution of 30cm, resulting in a $10m^3$ spatial context. At this resolution, the bag of semantic words for a single image query map contains several thousand descriptors for a fixed set of 18 uniformly spaced orientation hypotheses θ . A single forward pass of one volume takes around 1ms on a NVIDIA Titan X GPU while the geometric verification has negligible performance impact in comparison, leading to an average throughput of around one query image per second, which is on par with the fastest baselines we compare to. For pose estimation, we empirically choose a maximum error of $\kappa = 3$ meters and a minimum overlap ratio of $\tau = 0.3$.

4.3. Training

Throughout all experiments, we employ the same semantic descriptor and vocabulary trained offline on two sequences of around 10k and 20k frames [75] with accurate ground-truth poses acquired over several kilometers. The dataset contains a large number of loops with extreme viewpoint changes and is independent of the evaluation datasets. Note that this dataset is much more similar to KITTI as compared to NCLT, since it is an autonomous driving dataset with a stereo camera pair that we use for volumetric fusion. Nevertheless, we show that our descriptor generalizes well to NCLT. We train our encoder-decoder architecture on 16M random subvolumes using SGD and choose a latent code size of $N = 256$ as a trade-off be-

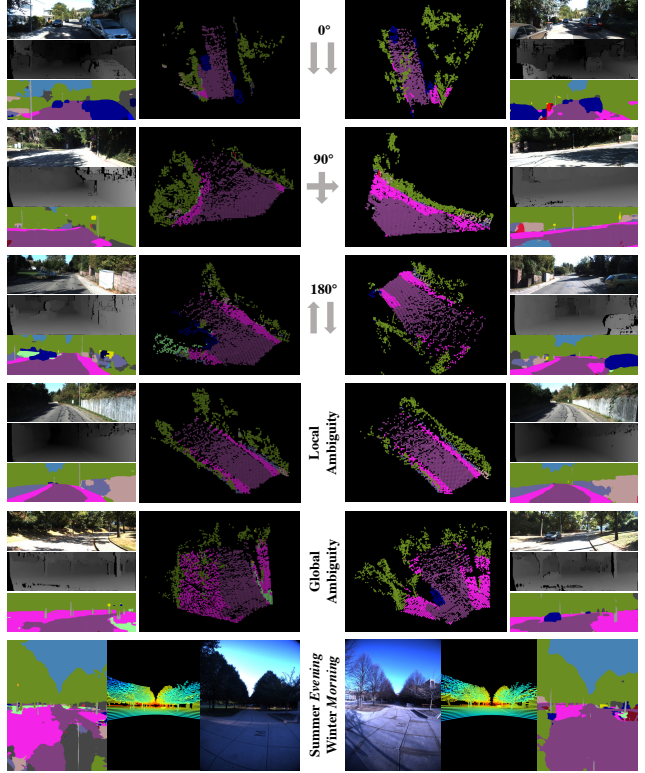


Figure 4: Example scenes in the KITTI and NCLT datasets for the different loop closure scenarios, including two failure cases caused by local and global ambiguities.

tween speed and accuracy. In our experiments, $N < 64$ led to significantly reduced reconstruction and localization performance, while $N > 512$ did not significantly improve the results. Our semantic vocabulary is represented by 2^{16} semantic words embedded in a $N_B = 64$ dimensional Hamming space, using a hierarchical branching factor of 256.

4.4. Baselines

In the following, we briefly present the chosen state-of-the-art baselines for our evaluation. We evaluate the localization performance on the ratio of correctly localized query images within a given error threshold. In addition, we show the rank-recall curves for an error threshold of 1m and 5m. For additional implementation details of the baselines, we refer the reader to the supplementary material.

SIFT and DSP-SIFT. We employ a state-of-the-art visual localization pipeline [50, 56] using SIFT [42]. This pipeline is based on a visual vocabulary tree embedded in a Hamming space [27] with visual burstiness weighting [28] and uses 2D-2D matching on the top-ranked retrievals to obtain 2D-3D correspondences for absolute pose estimation. Instead of SIFT, we also evaluate using DSP-SIFT [19], which has been shown to perform significantly better [5, 55].

MSER and VIP. Furthermore, we replaced the standard

SIFT keypoint detector with MSER [44] features, which are designed for wide baseline matching. Then, we extracted DSP-SIFT features and kept the rest of the SIFT pipeline as described above. In addition, we experimented with Viewpoint Invariant Patches [74], where we rectified the ground plane to cancel the effect of perspective distortion before extracting SIFT features. However, we found that we could not match features for 90° and 180° viewpoint changes on the KITTI dataset. Our main insight from this experiment was that the geometric and radiometric distortions are too severe for low-level appearance matching.

DenseVLAD. To study the impact of image retrieval on the localization performance, we replaced the vocabulary tree based ranking with DenseVLAD [68] as a global image descriptor and otherwise use the SIFT pipeline as described. DenseVLAD produces state-of-the-art retrieval results under large viewpoint [53] and illumination changes [68].

FPFH, CGF, and 3DMatch. FPFH [48], CGF [30], and 3DMatch [81] are state-of-the-art hand-crafted and learned geometric shape descriptors used for point cloud matching. We use them as a replacement for our descriptor while keeping the rest of the pipeline as proposed. Equivalent to our setup, we densely extract these shape descriptors using the same spatial descriptor radius and train a custom shape vocabulary on our training dataset. In addition, we fine-tune 3DMatch on our data using corresponding incomplete and complete volumes, resulting in a small performance boost.

PoseNet and DSAC We train separate PoseNet [29] models for each sequence as a state-of-the-art representative of end-to-end pose regression methods. We also experimented with DSAC [8] but failed to obtain meaningful results even for the smallest KITTI sequence.

Ours. We compare the above state of the art against our semantic localization pipeline, denoted as *Ours (semantic)*. To quantify the performance impact of semantic information on the localization task, we additionally train a version of our descriptor and vocabulary using uniform semantics with only a single label. As a result, the fused 3D maps contain only occupied, free, and unobserved space labels. Opposed to the FPFH, CGF, and 3DMatch, this can be seen as an occlusion-aware geometric shape descriptor, denoted as *Ours (geometric)*. In addition, we show results for fusing multiple frames into the query map, denoted as *Ours (acc.)*. Opposed to fusing a single frame, we fuse five consecutive frames into a query map and therefore demonstrate the benefit of accumulating more evidence over time to obtain less noisy and more complete query maps.

4.5. Results

Scene Completion. Fig. 3 shows results of the semantic completion task. We attain an average semantic reconstruction accuracy of 87% on the test data. In most cases, the

completed volume is a spatially smoothed approximation of the ground-truth. We conclude that the network learns powerful semantic representations of the world and meaningfully hallucinates the missing parts. Using this model for all further evaluations, we next demonstrate the performance of our approach on the task of localization.

0° Localization Scenario. First, we evaluated our method on the traditional loop closure scenario when images from similar viewpoints as the query image are indexed in the database. Fig. 5 shows the results for KITTI in the 0° column and on the main diagonal for NCLT. Our method achieves state-of-the-art errors for the top-ranked localization proposals and clearly outperforms the other geometric shape descriptors, whereas our semantic and geometric descriptors perform roughly on par. While (DSP-)SIFT and DenseVLAD achieve lower performance for the top-ranked proposals, they clearly outperform all other methods when retrieving many images. This is not surprising as this task is rather easy. Both the query and the database images depict the scene from similar viewpoints and are taken close to each other in time. Thus, low-level image statistics encoded by, e.g., SIFT or DenseVLAD are very discriminative.

90° Localization Scenario. To evaluate the methods in a more challenging setting, we consider 90° trajectory intersections, which is a common scenario in most robotic applications, e.g., when a car passes a street crossing twice but in orthogonal directions. For this experiment, we excluded all images from the database that are not within a viewpoint change of $90^\circ \pm 20^\circ$ wrt. the query images. The query consists of a short sequence of 20 images and the results are averaged over all 57 intersection cases in the dataset. Fig. 5 shows that this is indeed a very difficult scenario.

As expected, SIFT is not able to localize any query images due to the extreme viewpoint change, while DSP-SIFT and DenseVLAD perform slightly better. In contrast, FPFH and our method are able to localize a significant number of queries due to their invariance to appearance changes. Surprisingly, CGF and 3DMatch are not as robust as FPFH. Moreover, due to the different viewpoints, the geometry between the query and database map is not the same. Attributed to this fact, our approach achieves much better performance than existing geometric descriptors, because ours is specifically learned for invariance against missing observations. Moreover, our semantic descriptor outperforms our geometric descriptor by a large margin, highlighting the importance of semantic information for recognizing scenes from different viewpoints. We obtain another significant boost in performance by accumulating evidence over a short window of five frames.

180° Localization Scenario. Equivalent to the previous experiment, we also detected 180° trajectory intersections, which, for example, occur when a car passes the same street

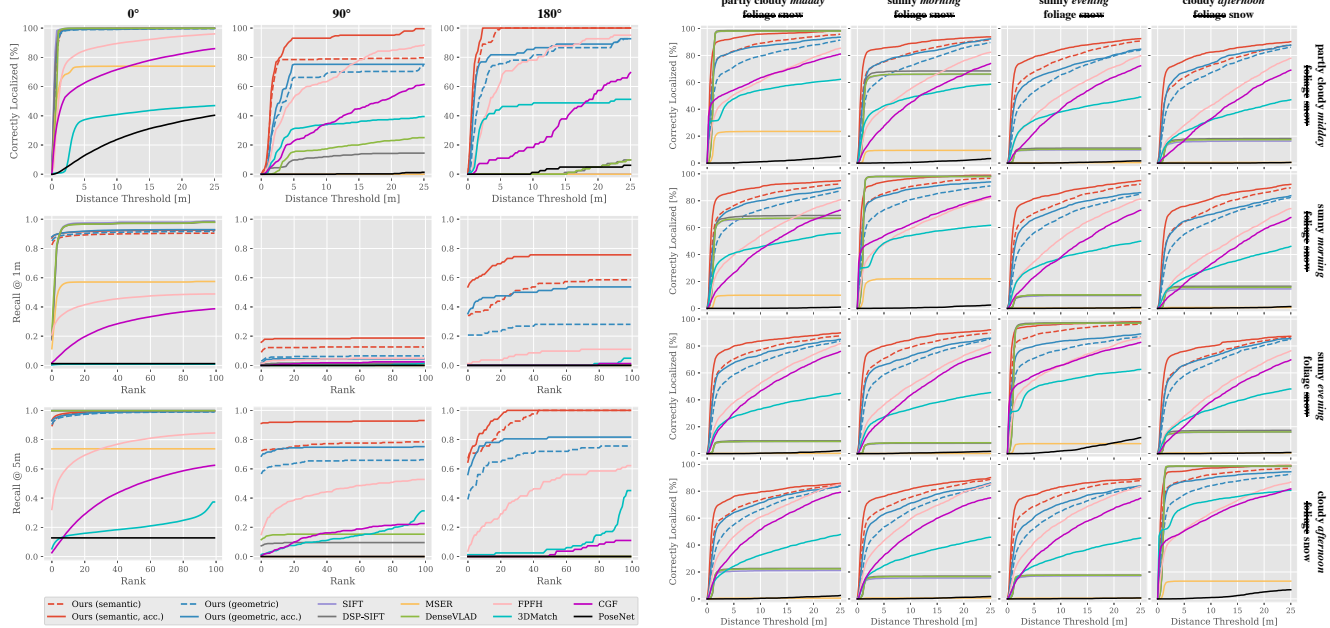


Figure 5: Localization results for the cross-viewpoint (0° , 90° , 180°) and cross-time localization scenarios in the KITTI odometry (left) and NCLT (right) datasets. Striked-through text denotes the absence of a property. Higher is better. See text for details.

but in opposite directions. Again, we excluded all images from the database that are not within a viewpoint change of $180^\circ \pm 20^\circ$ wrt. the query images. The results in Fig. 5 are averaged over all such cases. In this scenario, there is almost no visual overlap between the query and the database apart from, e.g., the street or walls. Consequently, SIFT is not able to localize any of the query images, while the geometric approaches succeed in this task. Notably, this task seems to be easier than the 90° scenario. We attribute this to the fact that in KITTI the 180° intersections typically have larger structural overlap between the query and database as compared to the 90° intersections.

Cross-Time Localization. The experiments on NCLT show that all but our method fail to robustly localize under extreme appearance changes caused by different geometry (foliage, snow) and illumination (time of day, weather). We observe that, in the cases where (DSP-)SIFT and DenseVLAD succeed, they mostly use stable features on buildings rather than vegetation or ground. In contrast, FPFH and 3DMatch are more robust to illumination changes. However, our method consistently outperforms all other methods across all scenarios. Note that our descriptor was trained on a KITTI-like dataset using stereo for map fusion instead of LIDAR used in NCLT. Furthermore, the same semantic classifier is employed for NCLT and KITTI. This demonstrates that our approach is robust to different types of input data and can be deployed in a wide range of settings without re-training. Looking at Fig. 3, it is not surprising that our approach generalizes to this new task as the network mainly focuses on the overall scene geometry and semantics.

Failure Cases. While our method robustly localizes queries in all scenarios, we observed a few common failure cases. The two most systematic errors are joint semantic and geometric ambiguities at a local or global scale (Fig. 4), also commonly occurring in traditional approaches [37, 50]. Local ambiguities are caused by repetitive structures, causing wrong localization in the order of tens of meters. Global ambiguities are more rare and typically result in a localization error of hundreds of meters. Accumulating evidence over multiple frames significantly reduces their impact. Furthermore, our classifier is trained on Cityscapes which only depicts daytime images during spring/summer/fall. Training classifiers tailored to different modalities should further improve the performance of our approach.

5. Conclusion

In this paper, we proposed a novel method for localization using a joint semantic and geometric understanding of the 3D world. At its core lies a novel approach to learning robust 3D semantic descriptors. Being the first to demonstrate reliable loop closure and localization even under extreme viewpoint and appearance changes, we believe that our method is an important step towards robust, life-long localization in applications such as autonomous robots or AR. While this paper focused on static scenes, an avenue for future research is the exploration of robustness against strong geometric changes caused by scene dynamics.

Acknowledgements This project received funding from the European Union’s Horizon 2020 research and innovation program under grant No. 688007 (TrimBot2020).

References

- [1] R. Arandjelović, P. Gronat, A. Torii, T. Pajdla, and J. Sivic. NetVLAD: CNN architecture for weakly supervised place recognition. In *CVPR*, 2016. 3
- [2] R. Arandjelovic and A. Zisserman. Visual vocabulary with a semantic twist. In *ACCV*, 2014. 2
- [3] S. Ardeshir, A. R. Zamir, A. Torroella, and M. Shah. Gis-assisted object detection and geospatial localization. In *ECCV*, 2014. 2
- [4] N. Atanasov, M. Zhu, K. Daniilidis, and G. J. Pappas. Localization from semantic observations via the matrix permanent. *IJRR*, 2016. 2
- [5] V. Balntas, K. Lenc, A. Vedaldi, and K. Mikolajczyk. Hpatches: A benchmark and evaluation of handcrafted and learned local descriptors. In *CVPR*, 2017. 6
- [6] P. Besl and H. McKay. A method for registration of 3d shapes. *PAMI*, 1992. 5
- [7] E. Brachmann, A. Krull, F. Michel, S. Gumhold, J. Shotton, and C. Rother. Learning 6d object pose estimation using 3d object coordinates. In *ECCV*, 2014. 1, 2
- [8] E. Brachmann, A. Krull, S. Nowozin, J. Shotton, F. Michel, S. Gumhold, and C. Rother. Dsac-differentiable ransac for camera localization. *CVPR*, 2017. 1, 2, 7
- [9] M. Brown, G. Hua, and S. Winder. Discriminative Learning of Local Image Descriptors. *PAMI*, 2011. 2
- [10] M. A. Brubaker, A. Geiger, and R. Urtasun. Map-based probabilistic visual self-localization. *PAMI*, 2016. 2
- [11] F. Camposeco, T. Sattler, A. Cohen, A. Geiger, and M. Pollefeys. Toroidal constraints for two point localization under high outlier ratios. In *CVPR*, 2017. 1, 2
- [12] N. Carlevaris-Bianco, A. K. Ushani, and R. M. Eustice. University of Michigan North Campus long-term vision and lidar dataset. *IJRR*, 2015. 6
- [13] F. Castaldo, A. Zamir, R. Angst, F. Palmieri, and S. Savarese. Semantic cross-view matching. In *CVPR*, 2015. 3
- [14] Z. Chen, A. Jacobson, N. Sünderhauf, B. Upcroft, L. Liu, C. Shen, I. D. Reid, and M. Milford. Deep Learning Features at Scale for Visual Place Recognition. In *ICRA*, 2017. 1, 3
- [15] A. Cohen, T. Sattler, and M. Pollefeys. Merging the unmatched: Stitching visually disconnected sfm models. In *ICCV*, 2015. 3
- [16] A. Cohen, J. L. Schönberger, P. Speciale, T. Sattler, J. Frahm, and M. Pollefeys. Indoor-outdoor 3d reconstruction alignment. In *ECCV*, 2016. 3
- [17] M. Cordts, M. Omran, S. Ramos, T. Rehfeld, M. Enzweiler, R. Benenson, U. Franke, S. Roth, and B. Schiele. The cityscapes dataset for semantic urban scene understanding. In *CVPR*, 2016. 6
- [18] M. Cummins and P. Newman. Fab-map: Probabilistic localization and mapping in the space of appearance. *IJRR*, 2008. 1
- [19] J. Dong and S. Soatto. Domain-size pooling in local descriptors: Dsp-sift. In *CVPR*, 2015. 6
- [20] R. Dubé, D. Dugas, E. Stumm, J. I. Nieto, R. Siegwart, and C. Cadena. Segmatch: Segment based loop-closure for 3d point clouds. In *ICRA*, 2017. 1
- [21] A. Geiger, P. Lenz, and R. Urtasun. Are we ready for autonomous driving? The KITTI vision benchmark suite. In *CVPR*, 2012. 5
- [22] C. Haene, C. Zach, A. Cohen, R. Angst, and M. Pollefeys. Joint 3D scene reconstruction and class segmentation. In *CVPR*, 2013. 3
- [23] X. Han, T. Leung, Y. Jia, R. Sukthankar, and A. C. Berg. MatchNet: Unifying Feature and Metric Learning for Patch-Based Matching. In *CVPR*, 2015. 2, 3, 4
- [24] H. Hirschmüller. Stereo Processing by Semiglobal Matching and Mutual Information. *PAMI*, 2008. 6
- [25] A. Hornung, K. M. Wurm, M. Bennewitz, C. Stachniss, and W. Burgard. Octomap: An efficient probabilistic 3d mapping framework based on octrees. *Autonomous Robots*, 2013. 3, 6
- [26] A. Irschara, C. Zach, J. Frahm, and H. Bischof. From structure-from-motion point clouds to fast location recognition. In *CVPR*, 2009. 2
- [27] H. Jégou, M. Douze, and C. Schmid. Hamming embedding and weak geometric consistency for large scale image search. In *ECCV*, 2008. 5, 6
- [28] H. Jégou, M. Douze, and C. Schmid. On the burstiness of visual elements. In *CVPR*, 2009. 6
- [29] A. Kendall, M. Grimes, and R. Cipolla. PoseNet: A convolutional network for real-time 6-dof camera relocalization. In *ICCV*, 2015. 1, 2, 7
- [30] M. Khoury, Q.-Y. Zhou, and V. Koltun. Learning compact geometric features. In *ICCV*, 2017. 1, 2, 4, 7
- [31] D. P. Kingma and M. Welling. Auto-encoding variational bayes. *arXiv*, 2013. 4
- [32] G. Klein and D. Murray. Parallel Tracking and Mapping on a Camera Phone. In *ISMAR*, 2009. 1
- [33] J. Knopp, J. Sivic, and T. Pajdla. Avoiding confusing features in place recognition. In *ECCV*, 2010. 2
- [34] N. Kobyshev, H. Riemenschneider, and L. V. Gool. Matching Features Correctly through Semantic Understanding. In *3DV*, 2014. 2
- [35] M. Kwang, E. Trulls, V. Lepetit, and P. Fua. LIFT: Learned Invariant Feature Transform. In *ECCV*, 2016. 2
- [36] S. Leutenegger, P. T. Furgale, V. Rabaud, M. Chli, K. Konolige, and R. Siegwart. Keyframe-based visual-inertial SLAM using nonlinear optimization. In *RSS*, 2013. 1
- [37] Y. Li, N. Snavely, D. Huttenlocher, and P. Fua. Worldwide pose estimation using 3d point clouds. In *ECCV*, 2012. 1, 2, 8
- [38] Y. Li, N. Snavely, and D. P. Huttenlocher. Location Recognition using Prioritized Feature Matching. In *ECCV*, 2010. 1, 2
- [39] H. Lim, S. N. Sinha, M. F. Cohen, and M. Uyttendaele. Real-Time Image-Based 6-DOF Localization in Large-Scale Environments. In *CVPR*, 2012. 2
- [40] T.-Y. Lin, S. Belongie, and J. Hays. Cross-view image geolocalization. In *CVPR*, 2013. 3
- [41] C. Linegar, W. Churchill, and P. Newman. Made to measure: Bespoke landmarks for 24-hour, all-weather localisation with a camera. In *ICRA*, 2016. 3

- [42] D. G. Lowe. Distinctive image features from scale-invariant keypoints. *IJCV*, 2004. 2, 6
- [43] S. Lynen, T. Sattler, M. Bosse, J. A. Hesch, M. Pollefeys, and R. Siegwart. Get Out of My Lab: Large-scale, Real-Time Visual-Inertial Localization. In *RSS*, 2015. 1, 2
- [44] J. Matas, O. Chum, M. Urban, and T. Pajdla. Robust wide-baseline stereo from maximally stable extremal regions. *IVC*, 2004. 7
- [45] A. Mousavian, J. Koščeká, and J.-M. Lien. Semantically Guided Location Recognition for Outdoors Scenes. In *ICRA*, 2015. 2
- [46] R. Mur-Artal, J. M. M. Montiel, and J. D. Tardós. ORB-SLAM: A versatile and accurate monocular SLAM system. *TRO*, 2015. 1
- [47] D. Nister and H. Stewenius. Scalable recognition with a vocabulary tree. In *CVPR*, 2006. 5
- [48] R. B. Rusu, N. Blodow, and M. Beetz. Fast point feature histograms (FPFH) for 3d registration. In *ICRA*, 2009. 2, 7
- [49] R. F. Salas-Moreno, R. A. Newcombe, H. Strasdat, P. H. J. Kelly, and A. J. Davison. SLAM++: simultaneous localisation and mapping at the level of objects. In *CVPR*, 2013. 2
- [50] T. Sattler, M. Havlena, K. Schindler, and M. Pollefeys. Large-Scale Location Recognition And The Geometric Burstiness Problem. In *CVPR*, 2017. 6, 8
- [51] T. Sattler, B. Leibe, and L. Kobbelt. Efficient & effective prioritized matching for large-scale image-based localization. *PAMI*, 39(9):1744–1756, 2017. 1, 2
- [52] T. Sattler, W. Maddern, C. Toft, A. Torii, L. Hammarstrand, E. Stenborg, D. Safari, M. Okutomi, M. Pollefeys, J. Sivic, F. Kahl, and T. Pajdla. Benchmarking 6dof outdoor visual localization in changing conditions. In *CVPR*, 2018. 3
- [53] T. Sattler, A. Torii, J. Sivic, M. Pollefeys, H. Taira, M. Okutomi, and T. Pajdla. Are large-scale 3d models really necessary for accurate visual localization? In *CVPR*, 2017. 1, 2, 7
- [54] J. L. Schönberger and J.-M. Frahm. Structure-from-motion revisited. In *CVPR*, 2016. 1
- [55] J. L. Schönberger, H. Hardmeier, T. Sattler, and M. Pollefeys. Comparative evaluation of hand-crafted and learned local features. In *CVPR*, 2017. 6
- [56] J. L. Schönberger, T. Price, T. Sattler, J.-M. Frahm, and M. Pollefeys. A vote-and-verify strategy for fast spatial verification in image retrieval. In *ACCV*, 2016. 6
- [57] J. L. Schönberger, F. Radenović, O. Chum, and J.-M. Frahm. From single image query to detailed 3d reconstruction. In *CVPR*, 2015. 1
- [58] M. Schreiber, C. Knöppel, and U. Franke. Laneloc: Lane marking based localization using highly accurate maps. In *IV*, 2013. 1, 2
- [59] J. Shotton, B. Glocker, C. Zach, S. Izadi, A. Criminisi, and A. Fitzgibbon. Scene Coordinate Regression Forests for Camera Relocalization in RGB-D Images. In *CVPR*, 2013. 1, 2
- [60] E. Simo-Serra, E. Trulls, L. Ferraz, I. Kokkinos, P. Fua, and F. Moreno-Noguer. Discriminative learning of deep convolutional feature point descriptors. In *ICCV*, 2015. 1, 2
- [61] K. Simonyan, A. Vedaldi, and A. Zisserman. Learning Local Feature Descriptors Using Convex Optimisation. *PAMI*, 2014. 1, 2
- [62] G. Singh and J. Koščeká. Semantically Guided Geo-location and Modeling in Urban Environments. In *Large-Scale Visual Geo-Localization*, 2016. 2
- [63] S. Song, F. Yu, A. Zeng, A. X. Chang, M. Savva, and T. Funkhouser. Semantic scene completion from a single depth image. *CVPR*, 2017. 3
- [64] N. Srivastava, G. E. Hinton, A. Krizhevsky, I. Sutskever, and R. Salakhutdinov. Dropout: a simple way to prevent neural networks from overfitting. *Journal of Machine Learning Research*, 2014. 4
- [65] N. Sünderhauf, S. Shirazi, A. Jacobson, F. Dayoub, E. Pepperell, B. Upcroft, and M. Milford. Place Recognition with ConvNet Landmarks: Viewpoint-Robust, Condition-Robust, Training-Free. In *RSS*, 2015. 1
- [66] L. Svärm, O. Enqvist, F. Kahl, and M. Oskarsson. City-Scale Localization for Cameras with Known Vertical Direction. *PAMI*, 2017. 1, 2
- [67] C. Toft, C. Olsson, and F. Kahl. Long-term 3d localization and pose from semantic labellings. In *ICCV Workshops*, 2017. 2, 3
- [68] A. Torii, R. Arandjelović, J. Sivic, M. Okutomi, and T. Pajdla. 24/7 place recognition by view synthesis. In *CVPR*, 2015. 1, 3, 7
- [69] J. P. C. Valentin, M. Nießner, J. Shotton, A. W. Fitzgibbon, S. Izadi, and P. H. S. Torr. Exploiting uncertainty in regression forests for accurate camera relocalization. In *CVPR*, 2015. 1, 2
- [70] F. Walch, C. Hazirbas, L. Leal-Taixe, T. Sattler, S. Hilsenbeck, and D. Cremers. Image-based localization using lstms for structured feature correlation. In *ICCV*, 2017. 1, 2
- [71] T. Weyand, I. Kostrikov, and J. Philbin. Planet-photo geolocation with convolutional neural networks. In *ECCV*, 2016. 3
- [72] M. Wolff, R. T. Collins, and Y. Liu. Regularity-driven facade matching between aerial and street views. In *CVPR*, 2016. 2
- [73] S. Workman, R. Souvenir, and N. Jacobs. Wide-area image geolocation with aerial reference imagery. In *CVPR*, 2015. 3
- [74] C. Wu, B. Clipp, X. Li, J.-M. Frahm, and M. Pollefeys. 3D Model Matching with Viewpoint-Invariant Patches (VIP). In *CVPR*, 2008. 2, 7
- [75] J. Xie, M. Kiefel, M.-T. Sun, and A. Geiger. Semantic instance annotation of street scenes by 3d to 2d label transfer. In *CVPR*, 2016. 6
- [76] F. Yu and V. Koltun. Multi-scale context aggregation by dilated convolutions. In *ICLR*, 2016. 6
- [77] F. Yu, J. Xiao, and T. A. Funkhouser. Semantic alignment of lidar data at city scale. In *CVPR*, 2015. 3
- [78] A. R. Zamir, T. Wekel, P. Agrawal, C. Wei, J. Malik, and S. Savarese. Generic 3D Representation via Pose Estimation and Matching. In *ECCV*, 2016. 2, 3, 4
- [79] B. Zeisl, K. Köser, and M. Pollefeys. Automatic Registration of RGB-D Scans via Salient Directions. In *ICCV*, 2013. 2

- [80] B. Zeisl, T. Sattler, and M. Pollefeys. Camera Pose Voting for Large-Scale Image-Based Localization. In *ICCV*, 2015. [1](#), [2](#)
- [81] A. Zeng, S. Song, M. Nießner, M. Fisher, J. Xiao, and T. Funkhouser. 3dmatch: Learning local geometric descriptors from rgb-d reconstructions. In *CVPR*, 2017. [1](#), [2](#), [4](#), [7](#)