

Supplemental Material

This file contains the supplemental material for the CVPR submission entitled “Geometry-Aware Network for Non-Rigid Shape Prediction from a Single View”. We show in Figure 1 samples of the proposed synthetic dataset which is described in Section 5.

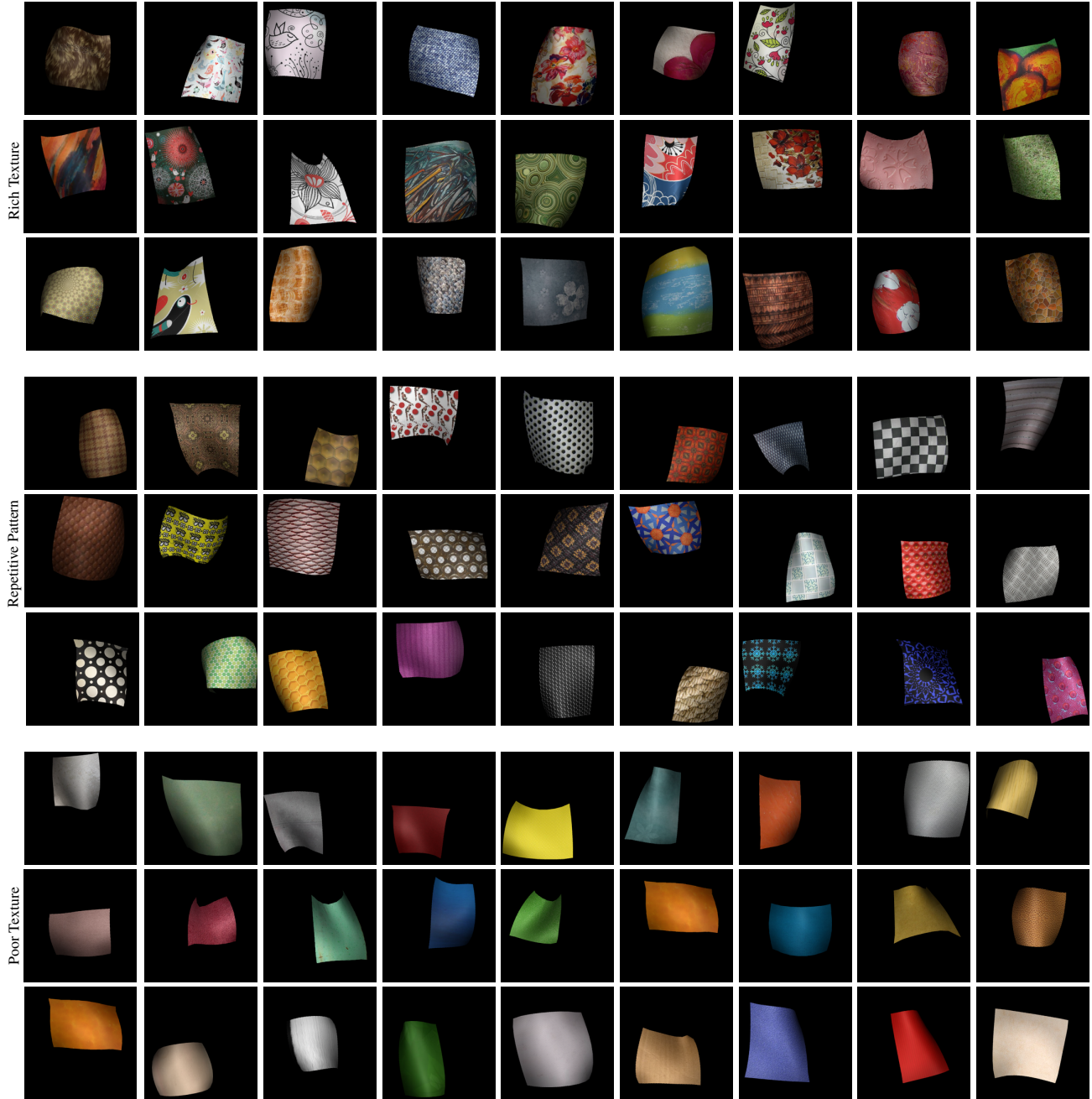


Figure 1. **Synthetic Dataset Samples.** We show a few illustrative samples of the proposed dataset, organized by type – rich textures, repetitive patterns and poor textures (top to bottom).