

Fig. 1. Our model inferred on images from COCO dataset. The head position is not always accurate, because the input skeleton is an interpolation from COCO skeleton to Human3.6m skeleton, which miss the top keypoint of the head.

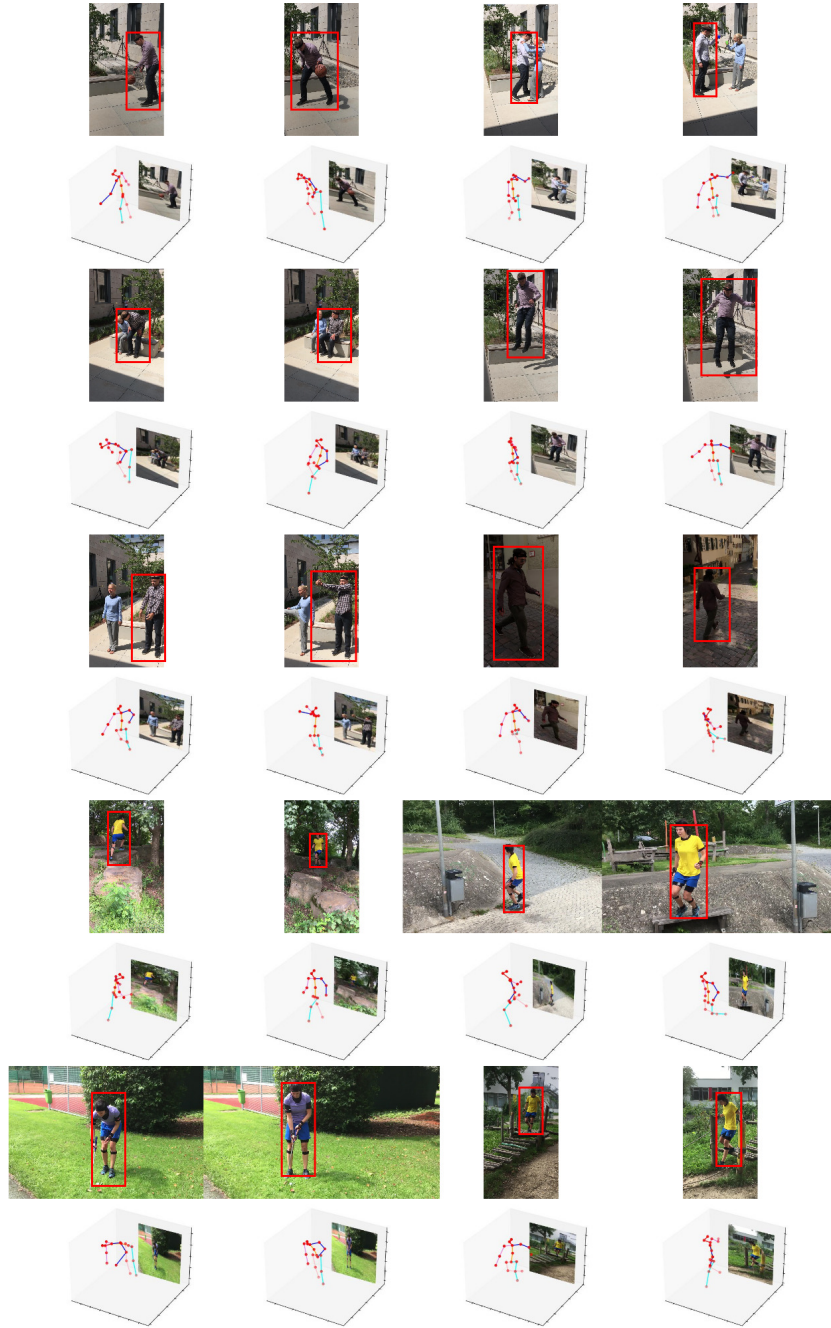


Fig. 2. Our model inferred on images from 3DPW validation dataset. One problem we have when doing inference on 3DPW is that our model is trained with 2D poses with all keypoints given, while 3DPW dataset has many keypoints not annotated even in 2D, in this case the lifted pose doesn't perform well.