

A. Domain shift experiment

In Table 7, we show the details of the cross-domain folds used for the domain-shift experiments. Also, in Table 8, the per-fold results of the same experiment are available.

Table 7: Cross-domain folds.

	Dataset	Fold 0	Fold 1	Fold 2	Fold 3
Excluded from training	MS-COCO	Person, Airplane, Boat, P. meter, Dog, Elephant	Bus, T. light, Bicycle, Bench, Horse, Bear,	Car, Fire H., Bird, Train, Sheep, Zebra	Motorcycle, Stop, Cat, Truck , Cow, Giraffe,
		Backpack, Suitcase, S. ball, Skateboard, W. glass, Spoon, Sandwich, Hot dog, Chair, D. table, Mouse, Microwave, Fridge, Scissors	Umbrella, Frisbee, Kite, Surfboard, Cup, Bowl, Orange, Pizza, Couch, Toilet, Remote, Oven, Book, Teddy	Handbag, Skis, B. bat, T. racket, Fork, Banana, Boroccoli, Donut, P.plant, TV, Keyboard, Toaster, Clock, Hairdrier	Tie, Snowboard, B.glove, Bottle, Knife, Apple, Carrot, Cake, Bed, Laptop, Cellphone, Sink, Vase, Toothbrush
Test classes	PASCAL-VOC	Airplane, boat, chair, D. table, Dog, Person	Horse, Sofa, Bicycle, Bus	Bird, Car, P.plant Sheep, Train, TV	Bottle, Cat, Cow, Motorcycle

Table 8: Per-fold domain-shift results on COCO-20ⁱ to PASCAL-5ⁱ experiment. Best results in bold.

Method	Backbone	1 shot					5 shot				
		Fold-0	Fold-1	Fold-2	Fold-3	Mean	Fold-0	Fold-1	Fold-2	Fold-3	Mean
RPM [38] (ECCV'20)		36.3	55.0	52.5	54.6	49.6	40.2	58.0	55.2	61.8	53.8
PFENet [33]	ResNet50	43.2	65.1	66.5	69.7	61.1	45.1	66.8	68.5	73.1	63.4
RePRI (ours)		52.2	64.3	64.8	71.6	63.2	56.5	68.2	70.0	76.2	67.7
Oracle-RePRI	ResNet50	69.6	71.7	77.6	86.2	76.2	73.5	74.9	82.2	88.1	79.7

B. Results of the 10-shot experiments

In Table 9, we give the per-fold results of the 10-shot experiments.

Table 9: Per-fold 10-shots results on PASCAL-5ⁱ and COCO-20ⁱ. Best results in bold.

Method	Backbone	PASCAL-5 ⁱ					COCO-20 ⁱ				
		Fold-0	Fold-1	Fold-2	Fold-3	Mean	Fold-0	Fold-1	Fold-2	Fold-3	Mean
RPM [38] (ECCV'20)		56.1	68.2	53.9	52.3	57.6	30.9	39.2	28.2	34.0	33.1
PFENet [33]	ResNet50	63.1	70.6	56.6	58.2	62.1	36.9	43.9	38.9	39.1	39.7
RePRI (ours)		65.7	71.9	73.3	61.2	68.1	41.6	48.2	42.1	44.5	44.1
Oracle-RePRI	ResNet50	75.6	81.0	82.1	75.6	78.6	57.5	64.7	56.6	56.1	58.7

C. Qualitative results

In Figure 4, we provide some qualitative results on PASCAL-5ⁱ that show how our method helps refining the initial predictions of the classifier.

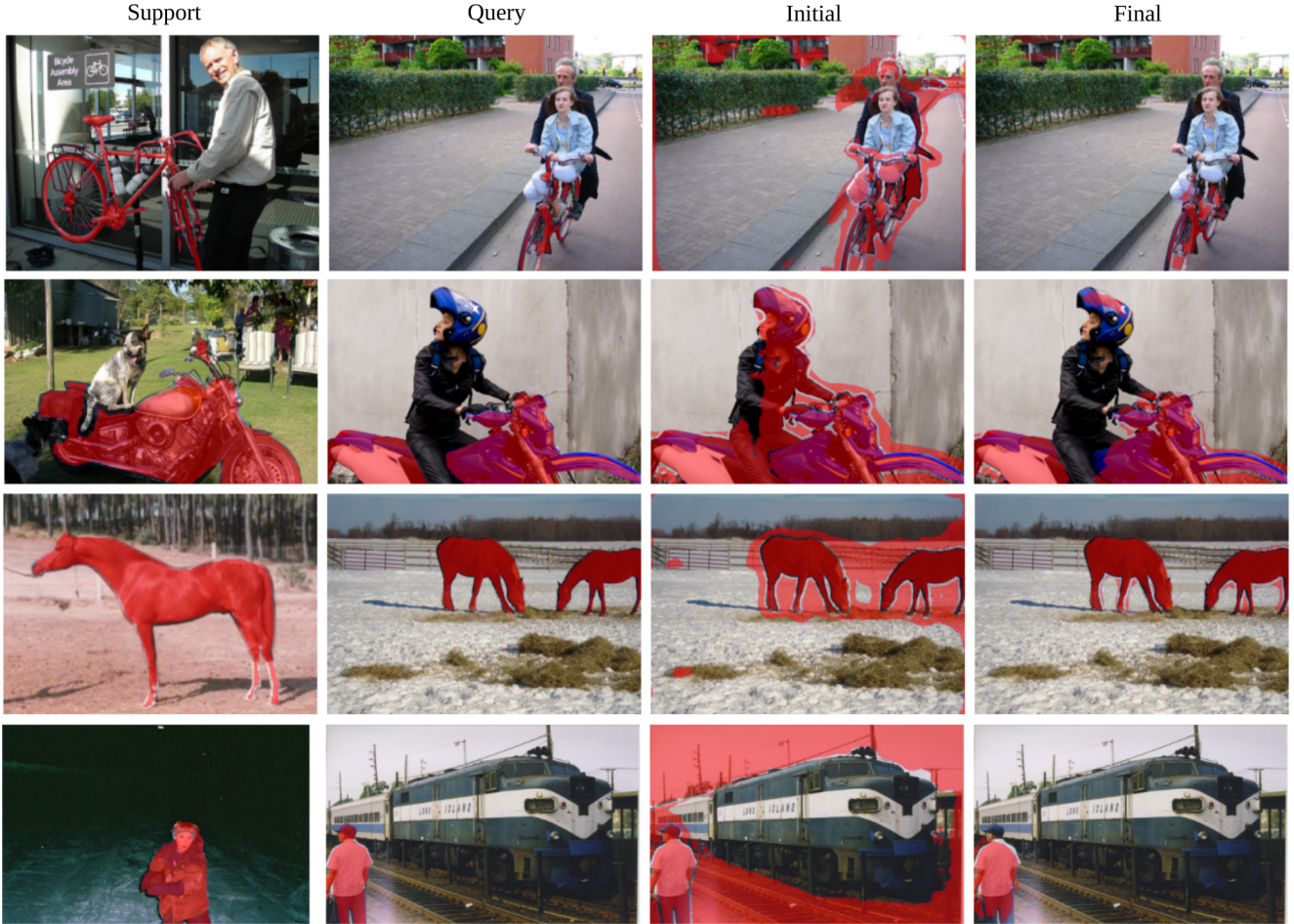


Figure 4: Qualitative results on PASCAL 5ⁱ. *Initial* column refers to the predictions right after initializing the prototypes, while *Final* column refers to the prediction after running our inference. Best viewed in colors in high resolution.