

# Appendix

## A. More Evaluation Results

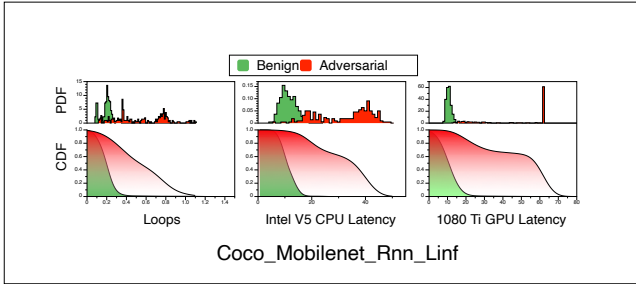


Figure 7. Efficiency Distribution

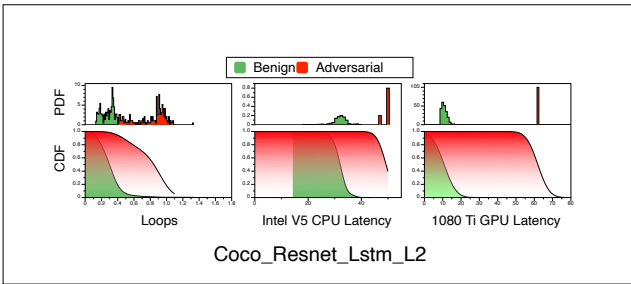


Figure 8. Efficiency Distribution

Figure 7, 8, 9, 10 show the efficiency distribution of benign images and the generated adversarial images.

The first and second rows represent the Probability Density Function (PDF) and Cumulative Distribution Function (CDF) results respectively. The area under the CDF curve indicates the efficiency of the NICG model, a larger area indicates the NICG model is less efficiency. The green area denotes the distribution of benign examples, and the red areas represent the distribution of adversarial examples generated by NICGSlowDown. From the results, we could observe that adversarial examples extremely change the FLOPs and latency distribution of NICG model. This observation is consistent with the results in Fig. 5.

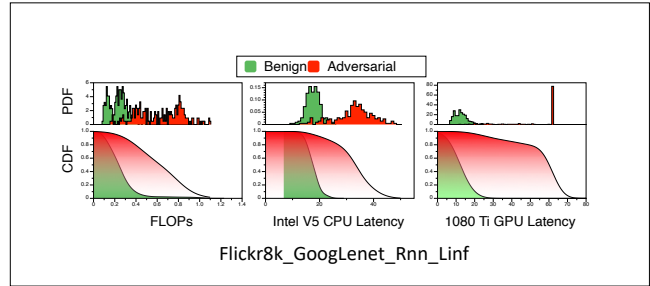
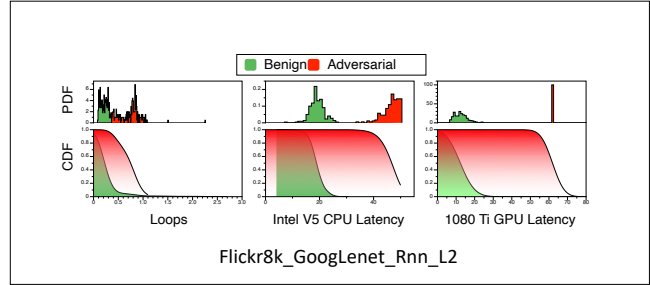


Figure 9. Efficiency Distribution

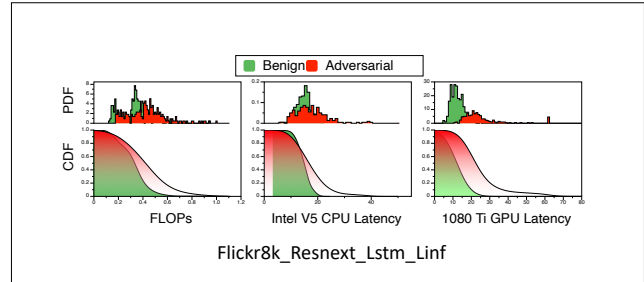
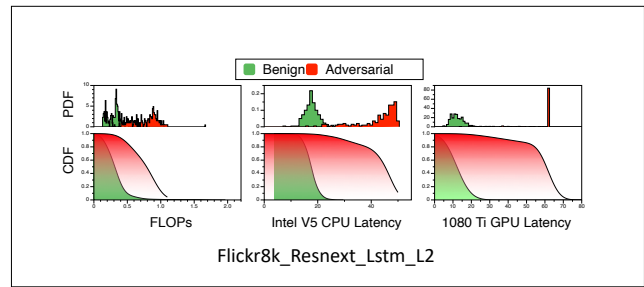


Figure 10. Efficiency Distribution

## B. More Adversarial Examples

Fig. 11 shows more generated adversarial examples, we provide more adversarial examples on the zip files.

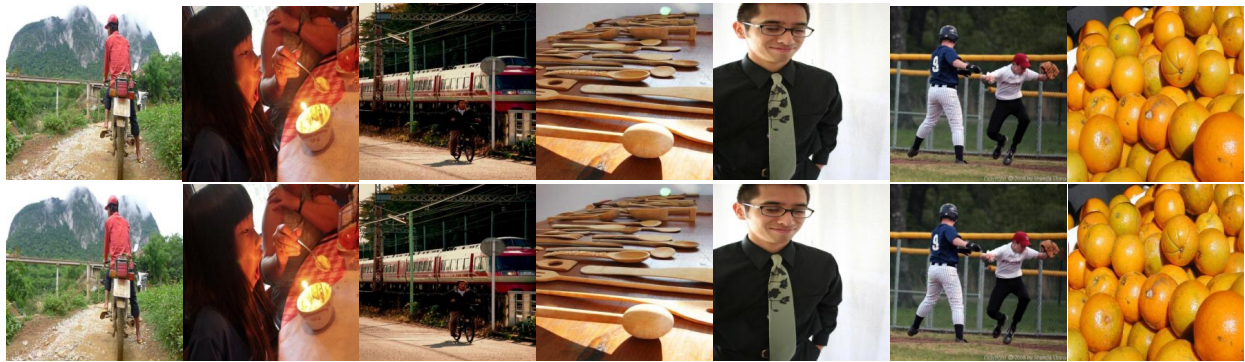


Figure 11. Generated adversarial examples