

Supplementary Material: Diffusion-SDF: Text-to-Shape via Voxelized Diffusion

1. Qualitative Results

In this section, we provide more qualitative illustrations for the generation results based on our proposed *Diffusion-SDF* approach. Figure 1 shows some extra diversified generated samples for text-conditioned shape generation. Figure 2 displays further text-conditioned shape completion results based on different input shapes. Figure 3 illustrates several text-conditioned shape manipulation results from diverse initial shapes. Results are displayed in the next few pages.

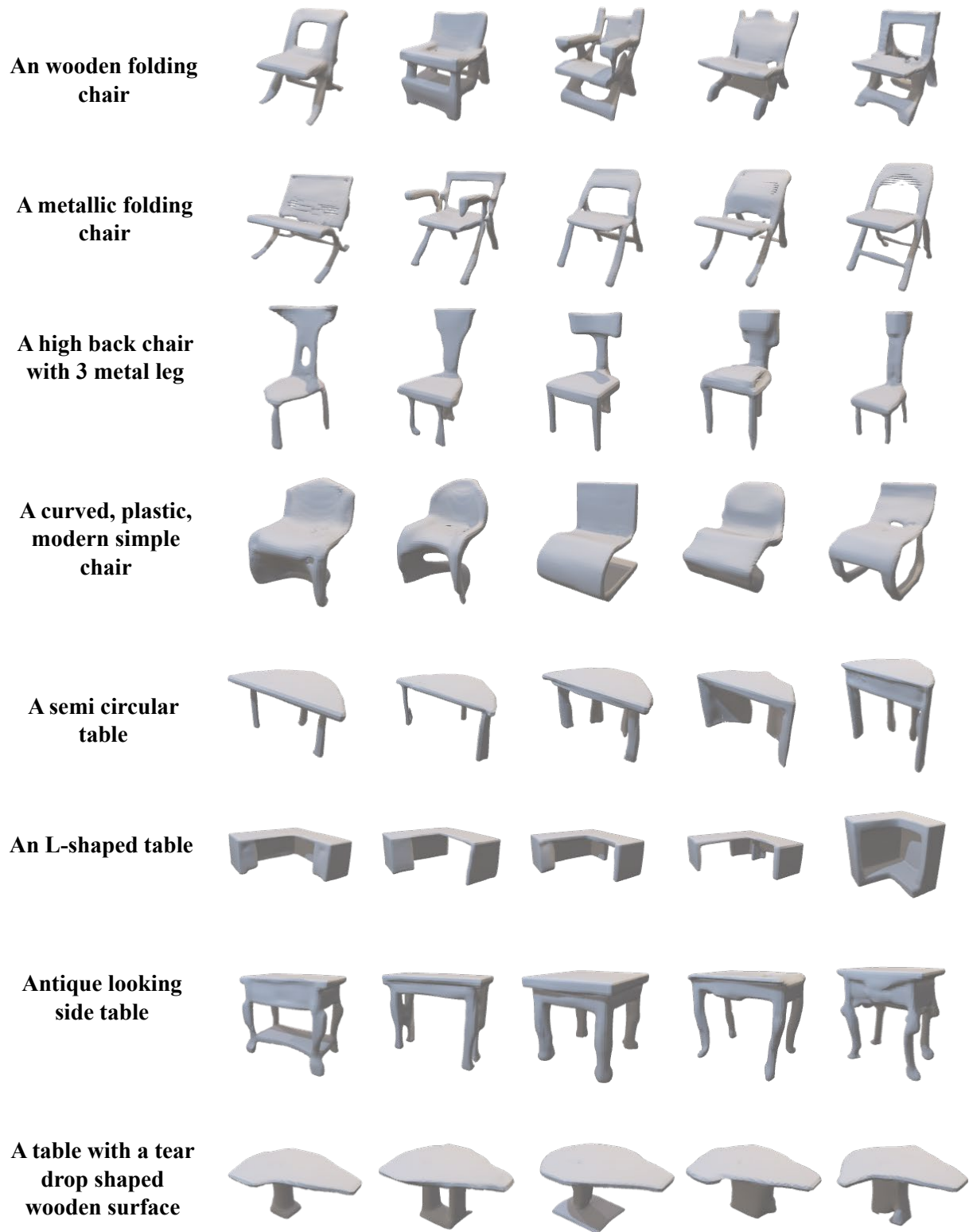


Figure 1. More illustrations on diversified text-to-shape generation.

Given shape

A sofa

A ball chair

A straight chair

A toilet

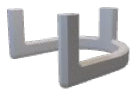
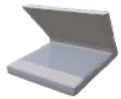


Figure 2. More illustrations on text-conditioned shape completion.

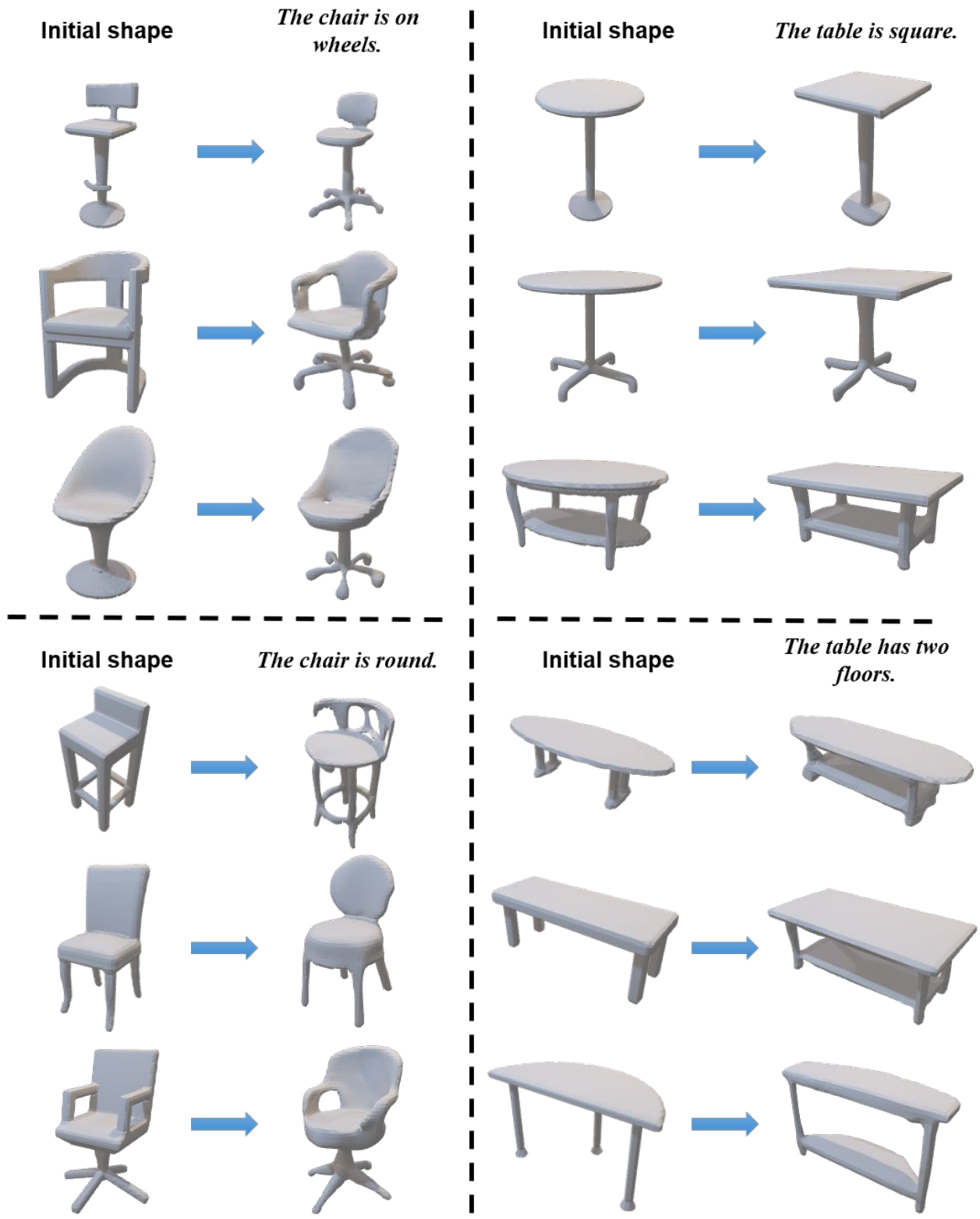


Figure 3. More illustrations on text-conditioned shape manipulation.