

Supplementary for Memory-friendly Scalable Super-resolution via Rewinding Lottery Ticket Hypothesis

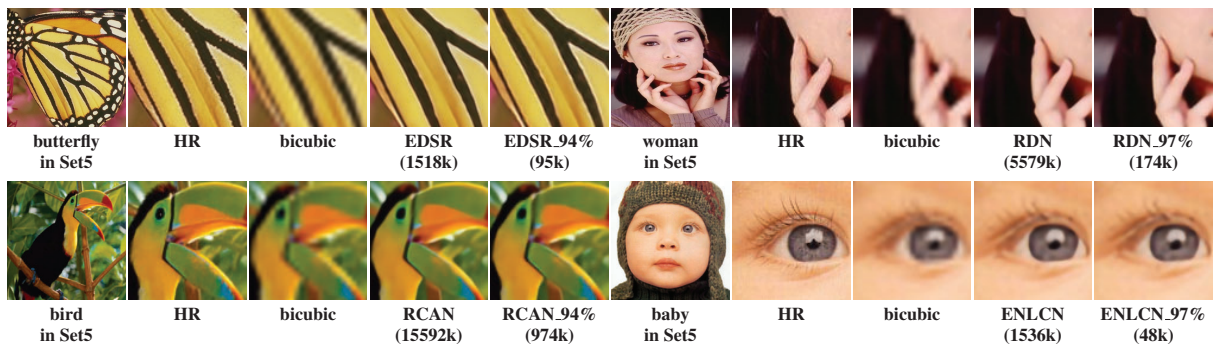


Figure 1. Visual comparisons of other SR models with IMP-SSD on Set5 for 4x SR.



Figure 2. Visual comparisons of other SR models with IMP-SSD on Set14 for 4x SR.



Figure 3. Visual comparisons of other SR models with IMP-SSD on B100 for $4\times$ SR.

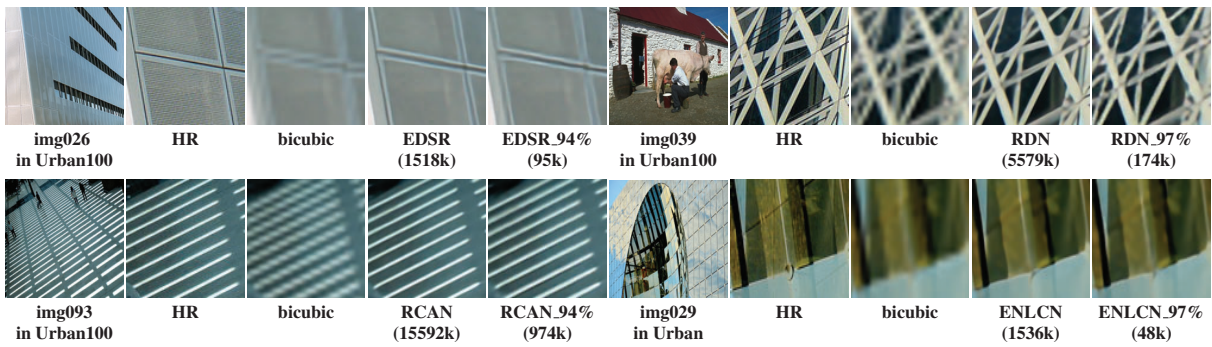


Figure 4. Visual comparisons of other SR models with IMP-SSD on Urban100 for $4\times$ SR.