

See Further When Clear: Curriculum Consistency Model

Supplementary Material

6. More Samples

Here we provide more samples in Figure 10-Figure 12.

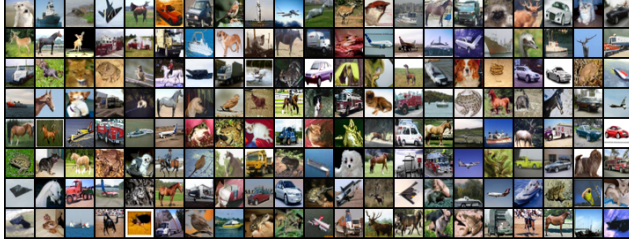


Figure 10. Samples generated by CCM (NFE=1) trained on CIFAR-10.

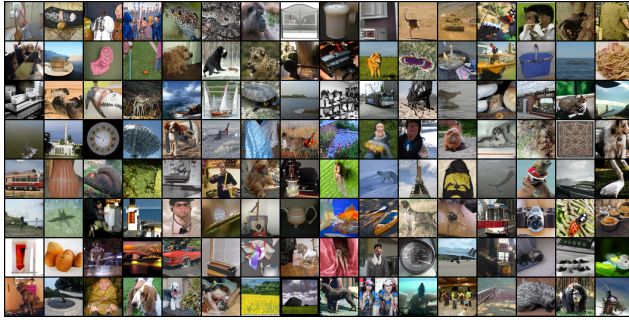


Figure 11. Samples generated by CCM (NFE=1) trained on ImageNet 64x64 according to random classes.

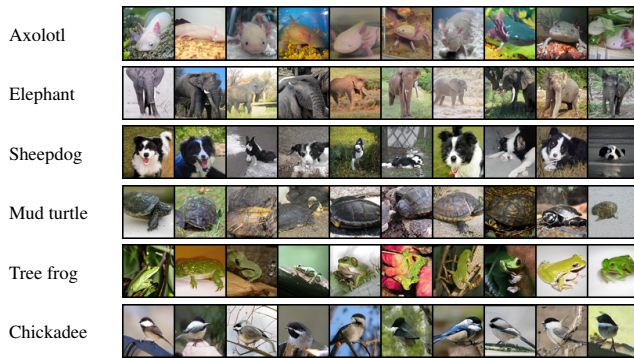


Figure 12. Samples generated by CCM (NFE=1) trained on ImageNet 64x64 according to specified classes.

are listed in Table 5.

Table 5. Experimental details on hyperparameters.

Hyperparameter	CIFAR-10 32x32	ImageNet 64x64	CC3M 1024x1024
Training type	unconditional	conditional	conditional
Learning rate	2e-4	1e-5	5e-6
Discriminator learning rate	0.002	0.002	1e-5
target EMA decay rate μ	0.9	0.9	-
student EMA decay rate	0.9999	0.9999	0.99
N	1	1	1
ODE solver	Euler	Euler	Euler
Batch size	128	2048	2
Number of GPUs	1	8	1
Training iterations	300K	500K	20K
T_{KDC}	60	60	60

7. Experimental Hyperparameters

We minimally change the OT-CFM’s [39] design to comply the previous implementation, and important modifications