

# Garments2Look: A Multi-Reference Dataset for High-Fidelity Outfit-Level Virtual Try-On with Clothing and Accessories

## Supplementary Material

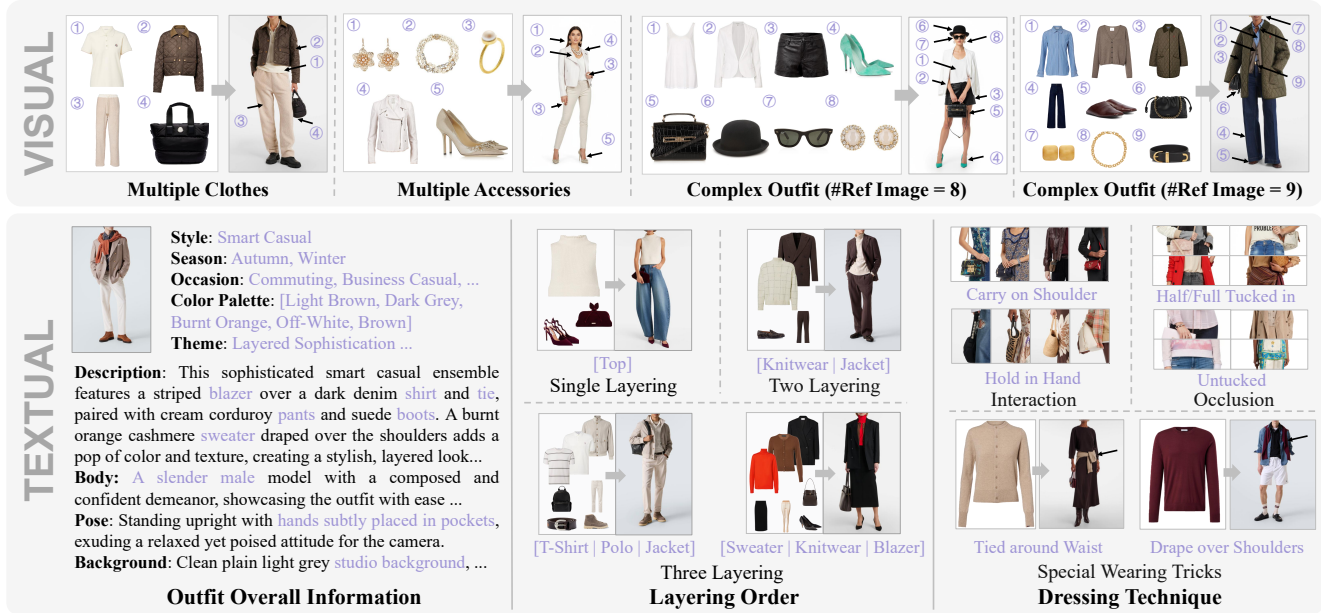


Figure S1. Example data in our outfit-level VTON dataset, Garments2Look.

## A. Dataset Details

### A.1. Visual Samples in Garments2Look

We showcase additional example data from our proposed dataset in Fig. S1. This dataset provides high-quality, high-precision, and highly diverse samples of complex and complete clothing combinations.

In terms of visual dimensions, we take a real-world application perspective, covering more complex virtual try-on scenarios than previous datasets. This includes everything from basic items to rich accessories, from single-layer outfits to multi-layered looks, and from single-style dressing to multiple styling options. For example, a simple combination of a T-shirt, shorts, shoes, and a bag often involves adding accessories like earrings, bracelets, hats, or glasses as focal points in real-world scenarios. Alternatively, a thin knitted cardigan can be layered over it to create a sense of depth. There are also opportunities to tie a scarf in a knot at the chest or around the waist. Beyond the increased dimensionality to fulfil practical usage, we also focused on ensuring data quality. From the item images or outfits collection, outfit composition generation, to try-on synthesis, everything was reviewed by fashion experts.

Furthermore, recognizing the importance of the text modality—and that certain information (*e.g.*, styling tips) is

better conveyed through language—unlike previous try-on datasets, we provide rich and detailed textual descriptions for all samples. These include item categories, fine-grained attributes (style, season, occasion, color, theme, *etc.*), overall descriptions of multi-item outfits, the order and manner in which items are worn, and factors that directly affect fit, such as the model’s body shape and posture.

We expect this dataset will strongly support deeper research and broader applications in virtual try-on.

### A.2. Data Division

As shown in Tab. S1, we constructed a test set of  $\sim 1\text{K}$  samples for evaluation. This set was stratified sampled from the full 80K samples to ensure high representativeness, and authenticity of data sources. All remaining samples were designated as the training set.

Table S1. Division of Garments2Look.

Type	Train	Test	Total
Real	39819	402	40222
Synthetic	39278	541	39819
Total	79097	944	80041

## B. Data Process

### B.1. Outfit Synthesis

**Style Guidance:** First, the style categories are determined based on popular classifications obtained through web retrieval. Next, the initial drafts are generated by Gemini-2.5-Flash. Finally, the content is revised by three senior fashion experts to ensure its professionalism and accuracy. An example of a style guide (Minimalist Style) is provided in Tab. S4.

**Primary Fashion Styles:** American Vintage, Androgynous, Beach, Bohemian, Business Casual, Casual, Classic, Comfort, Cottagecore, Country, Cowboy, Eclectic, Elegant, Formal, French chic, Girly, Glamorous, Gorpcore, Gothic, Hip-Hop, Hong Kong Vintage, Kawaii, Lagenlook, Military, Minimalist, Mori Girl, Moto, Old Money, Playful, Preppy, Punk, Quirky, Romantic, Spicy, Sporty, Street, Workwear, Y2K.

**Retrieval Sampling:** We introduce an inverse frequency-based reweighted retrieval sampling mechanism. We select the  $N$  candidate items  $\{x_1, \dots, x_N\}$  with the highest similarity from the retrieval results. Subsequently, we count the historical occurrence of each item  $x_i$  in current outfit dataset, denoted as  $c_i$ , and use this to define its inverse frequency weight  $w_i = (c_{\max} - c_i) + 1$ , where  $c_{\max} = \max_{j=1}^N(c_j)$ . During the sampling process, the probability  $f(c_i)$  of item  $x_i$  being selected is determined by the ratio of its weight to the total weight:  $f(c_i) = \frac{w_i}{\sum_{j=1}^N w_j}$ . This design encourages the model to select items with low historical occurrence frequency by assigning lower weights to historically high-frequency items.

### B.2. Look Synthesis

**Text Annotation of Look Image:** We generate rich textual annotations describing each try-on images. These annotations cover: (i) an overall description of the try-on image; (ii) how each item is worn, including layering order and styling techniques; and (iii) details about the model, such as body shape and pose, and backgrounds. Gemini-2.5-Flash generated all text annotations, and they were subsequently reviewed by fashion experts.

**Layering & Styling.** As shown in Fig. S2, our dataset captures the versatility of individual garments by including multiple outfit instances for the same piece. This design enables the same garment to appear in different layering configurations (*e.g.*, as a single base layer, paired with an outer jacket, or combined with an unconventional dress overlay) and to be styled in distinct ways (*e.g.*, carried over arm, or draped over the shoulders). Such diversity is valuable for advancing research on in-the-wild virtual try-on and garment layering order editing, as it provides rich examples of how garments interact with other pieces, mirroring the complexity of real-world fashion presentation.



Figure S2. More layering & styling in Garments2Look.

### B.3. Data Filtering

**Primary Categories List:** Activewear, Bag Accessories, Bags, Beachwear, Belts, Bracelets, Brooches, Coats, Cuff Links, Tie Clips, Dresses, Earrings, Glasses, Gloves, Hair Accessories, Hats, Jackets, Jeans, Jumpsuits, Knitwear, Lingerie, Necklaces, Pants, Rings, Scarves, Shirts, Shoes, Shorts, Ski Goggles, Skirts, Skiwear, Socks, Tights, Suits, Sunglasses, Ties, Bow Ties, Tops, T-shirts, and Watches.

**Categories Correction:** We manually corrected the category structure in the original metadata. We merge semantically similar subcategories (*e.g.*, consolidating “Sportswear Jacket” and “Suit Jacket” under the “Jacket” category), and exclude irrelevant categories (*e.g.*, home goods, phone cases, *etc.*). This process ensures subsequent outfit and look synthesis are focused on wearable garments.

**Fashion Expert Review Process:** To guarantee the quality of the synthetic data, we implemented a rigorous quality control pipeline involving 13 human fashion experts for review: (1) Guideline Development, establishing a rubric for quality and styling; (2) Pilot Study, using a 2% batch for double-blind labeling to refine criteria; and (3) Mass Annotation, employing cross-validation with a senior expert arbitrating any discrepancies to ensure consensus.

## C. More Experiments

### C.1. Split Results

In Tab. S2, we presents the split results; Nano Banana series maintain SOTA performance across both test subsets, outperforming all baselines.

### C.2. Influence of Explicit Pose Control

To investigate this, we sampled test data and utilized 3 references for image generation on our test set: the masked model image, the skeleton image, and the OOTD image. Based on the experimental results shown in Tab. S3, we observed that adding the skeleton image as an additional reference did not significantly improve the model’s metrics;

Table S2. Separated evaluation results on Garments2Look test set (golden/synthetic).

Method	KID↓	SSIM↑	LPIS↓	Garment Acc.↑	Layering Acc.↑	Styling Acc.↑
IP-Adapter	8.3390 / 8.0255	0.8588 / 0.7492	0.1076 / 0.1768	0.5224 / 0.4747	0.6424 / 0.5948	0.6001 / 0.5506
BootComp	13.5787 / 14.3927	0.7702 / 0.4925	0.2399 / 0.4083	0.6354 / 0.4636	0.3059 / 0.3142	0.4374 / 0.3048
OmniTry	9.5100 / 14.8091	0.8036 / 0.6654	0.2011 / 0.2507	0.5292 / 0.4105	0.1371 / 0.1743	0.3576 / 0.2024
FastFit	4.6095 / 6.1260	0.8559 / 0.8544	0.0968 / 0.0948	0.7189 / 0.5527	0.1266 / 0.1313	0.4727 / 0.2599
GPT-4o (2 Ref)	3.7019 / 0.8719	0.8179 / 0.7128	0.1378 / 0.1693	0.9320 / 0.8624	0.8987 / 0.8374	0.7044 / 0.6881
Seedream 4.0 (2 Ref)	12.4870 / 13.7404	0.8126 / 0.6786	0.1740 / 0.1640	0.7805 / 0.7643	0.8513 / 0.8875	0.6286 / 0.7124
NB (N Ref)	0.6837 / 0.9384	0.8745 / 0.8357	0.0753 / 0.0596	0.8562 / 0.7659	0.9272 / 0.9245	0.7125 / 0.7697
NB (2 Ref)	0.4981 / 1.1012	0.8769 / 0.8445	0.0699 / 0.0559	0.9503 / 0.9066	0.8703 / 0.8880	0.6844 / 0.7714
NB Pro (N Ref)	0.6596 / 0.2797	0.8072 / 0.8238	0.1156 / 0.0714	0.9808 / 0.9783	0.9483 / 0.9336	0.6966 / 0.7592
NB Pro (2 Ref)	1.0233 / 0.1314	0.8112 / 0.8269	0.1108 / 0.0680	0.9796 / 0.9641	0.9082 / 0.9370	0.6712 / 0.7516
QIE-2509 (2 Ref)	0.4754 / 1.6250	0.8874 / 0.7543	0.0609 / 0.1135	0.8704 / 0.7371	0.8639 / 0.8061	0.7074 / 0.6520
QIE-2509 (2 Ref) + FT	0.1116 / 0.2199	0.8997 / 0.8674	0.0481 / 0.0563	0.9410 / 0.8944	0.9873 / 0.9539	0.8453 / 0.8679

Table S3. Ablation experiment for using the skeleton image (pose condition) as an addition reference on image editing models. The format is “2 Ref / 3 Ref (3 Ref – 2 Ref Delta Value)”.

Models	FID↓	KID↓	SSIM↑	LPIS↓
Seedream 4.0 [36]	34.294 / 39.810 (+5.516)	10.446 / 13.310 (+2.864)	0.757 / 0.729 (-0.028)	0.335 / 0.349 (+0.014)
QIE-2509 [47]	29.030 / 32.773 (+3.743)	7.142 / 9.654 (+2.512)	<b>0.827</b> / 0.825 (-0.002)	0.116 / <b>0.114</b> (-0.002)
NB [8]	<b>21.545</b> / 21.484 (-0.061)	<b>0.641</b> / 0.867 (+0.226)	0.825 / 0.824 (-0.001)	0.131 / 0.131 (+0.000)
NBP	24.293 / 24.469 (+0.176)	2.160 / 2.217 (+0.057)	0.797 / 0.800 (+0.003)	0.174 / 0.179 (+0.005)

instead, performance slightly decreased. This suggests that general image editing models may struggle to effectively integrate and disambiguate “different type” of reference information (pose structure vs. object reference) simultaneously. When we introduce the skeleton image as a third input and treat it as equally important as the garment item image, the model may fail to correctly interpret the skeleton’s role as a pose constraint. Rather, this extra input can introduce information redundancy or confusion, interfere with the model’s editing capability, and ultimately lead to a drop in metrics. This contrasts with models specifically designed for VTON, which can effectively leverage skeleton information.

### C.3. Results after Fine-Tuning

All results in the main paper are not fine-tuned. We add results fine-tuning Qwen-Image-Edit-2509 on our training set (randomly sampled 10K due to the time constraint). As shown in Tab. S2, Fig. S3 and Fig. S4 (QIE-2509+FT), the quantitative and qualitative results, and user study all demonstrate improvements.

### C.4. User study on Layering

We conducted a user study focused on layering quality, specifically evaluating aspects such as occlusion rationality and layering accuracy. As shown in Fig. S4, the results reveal significant performance disparities among different methods, reflecting their varying capacities to leverage annotations. FastFit, limited by its single-layer processing capability, received the lowest preference scores. Notably, after fine-tuning on a small subset of our data, QIE-2509’s performance improved significantly from 0.41 to 0.627. This highlights the intrinsic value of our dataset and demonstrates that models can effectively digest and utilize the rich information it provides.



Figure S3. Qualitative results after fine-tuning QIE-2509 on 10K random sampled data from Garments2Look training set.

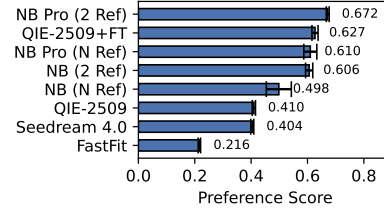


Figure S4. User study on layering accuracy.

### C.5. More Examples and Results

In Figs. S5 to S9, we present sample data from multiple datasets to clearly demonstrate the rich annotations provided by our dataset. In Figs. S10 to S14, we show additional generated results from state-of-the-art VTON models, general-purpose image editing models, and our simply fine-tuning model. These examples illustrate VTON performance of different models, the inherent difficulty of the new task, outfit-level VTON, and our dataset utility for this task.

---

### Style Guidance Example: Minimalist Style

---

**Template** # Outfit Guide for Minimalist style  
This guide summarizes the core principles of Minimalist fashion, emphasizing intentionality, timelessness, and understated elegance through clean lines, neutral palettes, and high-quality materials.

## I. Core Preferences and Prohibitions  
Category	Preference	Prohibition
**Primary Colors**	White, Black, Grey, Navy, Beige/Camel	Bright neons, Loud primary colors (e.g., electric blue), Overly saturated jewel tones
**Accents Colors**	Olive Green, Muted Blush, Terracotta, Soft Khaki, Charcoal	Fluorescent shades, Clashing bold hues, Iridescent fabrics
**Patterns**	Solid, Subtle Stripe (e.g., pinstripe, thin horizontal), Micro-check, Herringbone (subtle), Small geometric	Large florals, Busy animal prints, Loud abstract, Polka dots, Ornate damask
**Style/Fit**	Clean lines, Tailored, Structured, Slightly oversized (but intentional), A-line, Straight-cut	Bodycon, Overly baggy/shapeless, Excessive ruffles/frills, Unstructured asymmetry
**Textures/Materials**	Cotton, Linen, Wool (Cashmere, Merino), Silk, Leather (smooth), Tencel/Modal	Cheap synthetics, Overly shiny/glossy, Coarse tweed, Heavily distressed denim
**Accessories**	Delicate gold/silver jewelry, Structured leather bag, Classic leather belt, Plain sunglasses, Simple watch, Silk scarf	Chunky statement necklaces, Heavily embellished bags, Novelty accessories, Excessive layering of jewelry
**Overall Vibe/Mood**	Effortless Chic, Serene, Timeless, Polished, Intentional, Calm	Trendy, Flashy, Ostentatious, Cluttered, Overly Casual/Sloppy
—

## II. Styling Pattern  
This stylist's outfits emphasize intentional simplicity, high-quality foundational pieces, and a harmonious balance of form and function to create a polished and enduring aesthetic.

### 1. Classic Outfit Examples (4 examples)  
Style	Structure (Item Components)	Keywords
**Effortless Everyday**	White oversized button-down shirt + Tailored black wide-leg trousers + Minimalist leather loafers + Delicate gold hoop earrings + Structured leather tote bag	Polished, Comfortable, Versatile
**Sophisticated Professional**	Camel wool blazer + Cream silk camisole + Navy straight-leg pants + Low-heeled leather pumps + Sleek minimalist watch	Refined, Business-Ready, Streamlined
**Elevated Casual**	Grey cashmere crewneck sweater + Black A-line midi skirt + White minimalist sneakers + Small crossbody bag + Simple pendant necklace	Relaxed, Chic, Understated
**Modern Urbanit**	Black mock-neck long-sleeve top + Light wash straight-leg jeans + Ankle boots + Black tailored trench coat + Oversized sunglasses	Contemporary, Sleek, Urban

### 2. Outfit Extended Rules Summary

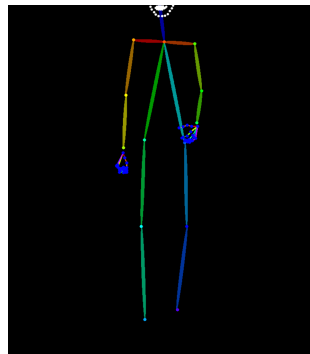
- **Color Palette:** Dominated by neutrals (black, white, grey, beige, navy), often monochromatic or with subtle tonal variations. Accent colors are muted and used sparingly to maintain serenity and avoid visual clutter.
- **Layering Principle:** Strategic and purposeful, focusing on adding warmth, dimension, or textural interest without creating bulk. Layers should align cleanly and contribute to the overall streamlined silhouette, emphasizing clean lines and functionality.
- **Fit Requirements:** Predominantly clean, tailored, and comfortable. Items should skim the body without being restrictive, or be intentionally oversized for a relaxed yet structured feel. Avoid anything ill-fitting, overly tight, or excessively baggy.
- **Pattern Restriction:** Strict preference for solids. If patterns are used, they are extremely subtle, such as thin pinstripes, micro-checks, or very faint textures, ensuring they do not disrupt the minimalist aesthetic but rather add a subtle layer of interest.
- **Shoe/Bag Principle:** Footwear and bags are chosen for their classic design, high-quality materials, and functionality. Styles are clean, unembellished, and contribute to the overall polished and timeless look (e.g., leather loafers, simple pumps, structured totes).
- **Accessory Requirements:** Minimalist accessories are curated for their understated elegance and practical purpose. They are few in number, high in quality, and serve to complement rather than dominate the outfit. Delicate jewelry, classic watches, and plain sunglasses are preferred.
- **Overall Balance:** Achieved through careful consideration of proportion, texture, and color. Outfits strive for visual harmony, avoiding any single element that overwhelms or distracts from the clean lines and intentional simplicity, creating a sense of calm and effortlessness.
- **Scene Adaptability:** Outfits are designed to be highly versatile, easily transitioning between different settings (e.g., office, casual outings, evening events) with minimal adjustments, thanks to their timeless appeal and foundational nature.

---

Table S4. The prompt template of minimalist style guidance.



**Model**



**Pose**



**Segmentation**



**beige cotton jersey t-shirt**  
 Sydney cotton jersey T-shirt  
 clothing::tops::long-sleeved tops  
 Layer 1



**burgundy wool and cashmere sweater**  
 Wool and cashmere sweater  
 clothing::knitwear::sweaters  
 Layer 2



**black mid-rise wide-leg jeans**  
 Mid-rise wide-leg jeans  
 clothing::jeans::wide-leg jeans



**beige suede-trimmed leather sneakers**  
 Ball Star suede-trimmed leather sneakers  
 shoes::sneakers::low-top sneakers



**black studded leather shoulder bag**  
 Elena Small studded leather shoulder bag  
 bags::shoulder bags



**earrings**  
 Agoflus drop earrings  
 jewelry::fashion jewelry::earrings



**grey leather belt**  
 Leather belt  
 accessories::belts

**OUTFIT INFO**

**STYLE** Casual Style

**SEASON** Autumn

**OCCASION** Daily Wear

**TOPIC** Cozy Comfort and Effortless Chic

**OVERALL DESCRIPTION** This casual ensemble features a rich deep red wool and cashmere sweater layered over a cream cotton t-shirt, paired with relaxed dark grey wide-leg jeans. A black studded shoulder bag and classic sneakers complete this comfortable yet stylish look, accented by delicate drop earrings.

**PALETTE** Deep Red, Dark Grey, Cream, Black, Silver

**MODEL INFO**

**BODY**

Slender physique, exuding a relaxed and confident presence, showcasing the outfit's comfortable fit and modern silhouette.

**POSE**

Standing front-facing with one hand casually in a jeans pocket, conveying an approachable and natural demeanor.

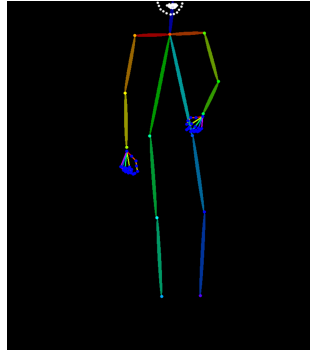
**BACKGROUND**

Simple, clean off-white studio background provides a neutral canvas, effectively highlighting the outfit's details.

Figure S5. More example data in Garments2Look (1/5).



**Model**



**Pose**



**Segmentation**



**white striped cotton poplin shirt**  
Striped cotton poplin shirt  
clothing::shirts::casual::long-sleeved shirts  
collar worn outside sweater neckline  
Layer 1



**blue cashmere polo sweater**  
Cashmere polo sweater  
clothing::knitwear::polo sweaters  
Layer 3



**beige leather blouson**  
Leather blouson  
clothing::jackets::leather worn unbuttoned  
Layer 4



**jeans**  
Mid-rise slim jeans  
clothing::jeans::straight-leg jeans  
cuffed hem



**black suede penny loafers**  
Suede penny loafers  
shoes::loafers



**grey leather-trimmed canvas garment bag**  
Leather-trimmed canvas garment bag  
bags::travel bags



**red striped silk tie**  
Striped silk tie  
accessories::ties  
Layer 2

**OUTFIT INFO**

**STYLE** Smart Casual Style

**SEASON** Autumn, Spring

**OCCASION** Business Casual, Weekend Social

**TOPIC** Layered Sophistication, Refined Comfort

**OVERALL DESCRIPTION** A refined smart casual ensemble layers a beige blouson over a navy cashmere sweater, striped shirt, and burgundy tie. Dark wash slim jeans are paired with suede loafers, complemented by a sophisticated leather-trimmed canvas bag. The look offers a blend of classic menswear with contemporary ease and texture.

**PALETTE** Navy Blue, Beige, White, Burgundy, Dark Brown, Grey

**MODEL INFO**

**BODY**

The model has a slender, well-proportioned physique, exuding a confident yet relaxed demeanor with a natural posture.

**POSE**

The model stands naturally with one hand casually in his jeans pocket, projecting a relaxed and approachable stance.

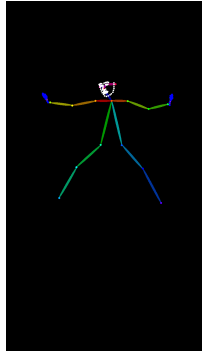
**BACKGROUND**

A minimalist, light grey studio background provides a clean and unobtrusive setting, focusing attention solely on the outfit.

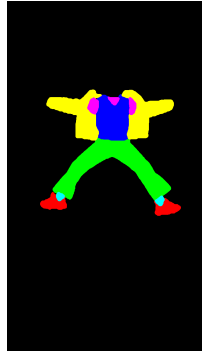
Figure S6. More example data in Garments2Look (2/5).



**Model**



**Pose**



**Segmentation**



**green printed ruffled top**

Cycas printed ruffled cotton-blend top  
clothing::girls' tops & shirts  
Layer 1



**white cable-knit sweater vest**

Jobolene sweater vest  
clothing::girls'  
knitwear::girls' cardigans & vests  
Layer 2



**multicoloured colorblocked puffer jacket**

Super Mojo colorblocked down ski jacket  
clothing::girls' skiwear  
worn off-shoulder  
Layer 3



**dark blue corduroy pants**

Junon cotton corduroy pants  
clothing::girls' pants



**multicoloured colorblocked sneakers**

Colorblocked sneakers  
shoes::girls' sneakers

**OUTFIT INFO**

**STYLE** Youthful Sporty

**SEASON** Autumn / Winter

**OCCASION** Daily Wear / Outdoor Play

**TOPIC** Vibrant Layering and Playful Energy

**OVERALL DESCRIPTION** A child sports a dynamic, layered ensemble featuring a vibrant colorblocked jacket worn playfully, a classic white sweater vest, and dark flared pants. Completed with stylish colorblocked sneakers, this energetic look is perfect for adventurous outings.

**PALETTE** Pink, Light Blue, Navy, White, Green, Beige

**MODEL INFO**

**BODY**

A youthful child with a slender build, demonstrating active and spirited physical engagement.

**POSE**

Captured mid-air during a jump, with arms and legs spread wide in an energetic, joyful expression.

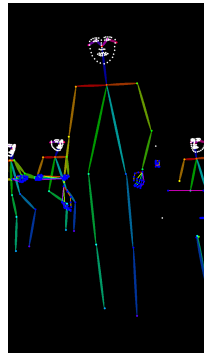
**BACKGROUND**

An enchanting, moss-covered ancient ruin in a forest setting, illuminated by soft, magical glowing lights.

Figure S7. More example data in Garments2Look (3/5).



**Model**



**Pose**



**Segmentation**



**blue striped cotton shirt**  
 Striped cotton ooplin shirt  
 clothing::shirts::casual::short-sleeved shirts  
 partially unbuttoned, tucked-in  
 Layer 1



**black single-breasted blazer**  
 Icon single-breasted blazer  
 clothing::tailoring::suit jackets  
 worn open  
 Layer 2



**blue cotton shorts**  
 Cotton shorts  
 clothing::shorts::casual



**brown suede loafers**  
 Logo suede loafers  
 shoes::loafers



**brown leather crossbody bag**  
 Gear Small leather crossbody bag  
 bags::crossbody bags  
 crossbody worn



**black woven leather belt**  
 Intrecciato leather belt  
 accessories::belts  
 belted

**OUTFIT INFO**

**STYLE** Sophisticated Casual

**SEASON** Summer

**OCCASION** Business Casual Event, Resort Wear

**TOPIC** Smart Summer Professionalism

**OVERALL DESCRIPTION** A refined summer ensemble featuring tailored shorts paired with a striped shirt and blazer, exuding effortless elegance. The look balances professionalism with a relaxed, warm-weather appropriate aesthetic, complemented by classic accessories for a polished finish.

**PALETTE** Navy Blue, Light Blue, Brown, Black

**MODEL INFO**

**BODY**

The model has a fit, athletic build with a neat beard, displaying a confident and composed demeanor.

**POSE**

Standing upright with one hand in a pocket, the model maintains a relaxed yet poised stance, engaging directly with the viewer.

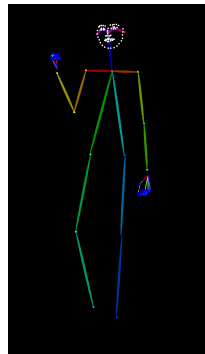
**BACKGROUND**

The scene is set on a wooden boat deck with an ocean view under a clear, bright sky, suggesting an outdoor meeting.

Figure S8. More example data in Garments2Look (4/5).



**Model**



**Pose**



**Segmentation**



**burgundy cable knit crew neck sweater**  
Women's Cable Knit Crew Neck Sweater  
top  
tucked-in front  
Layer 1



**black leather biker jacket**  
Acne Studios Women's Black Leather Biker Jacket  
outwear  
worn fully zipped  
Layer 2



**jeans**  
Women's Black High Waisted Ripped Skinny Jeans  
pants



**black patent platform lace-up ankle boots**  
Black Patent Platform Lace-Up Ankle Boots  
shoes



**black leather top handle satchel bag**  
Classic Black Leather Top Handle Satchel Bag  
bag



**round half-rim black gold sunglasses**  
Round Half-Rim Matte Sunglasses  
eyewear



**black leather chain fingerless gloves**  
Women's Black Leather Chain Fingerless Gloves  
gloves

#### OUTFIT INFO

**STYLE** Edgy Street Style

**SEASON** Autumn

**OCCASION** Daily Wear

**TOPIC** Contrast and Texture, Bold and Effortless

**OVERALL DESCRIPTION** The outfit combines a rich burgundy cable knit sweater with a sleek black leather biker jacket layered over it. High-waisted ripped skinny jeans and glossy platform lace-up ankle boots emphasize a rebellious urban feel. Accented by fingerless leather gloves, round sunglasses, and a structured satchel, it exudes confident streetwear flair.

**PALETTE** Black, Burgundy, Silver

#### MODEL INFO

##### BODY

Tall and slim physique with a poised, confident and composed demeanor.

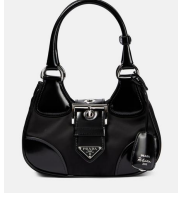
##### POSE

Standing straight, slightly angled, left hand raised near face, right hand holding handbag relaxed.

##### BACKGROUND

Simple, clean white backdrop enhancing focus on the outfit and model.

Figure S9. More example data in Garments2Look (5/5).



white tank top  
 Logo cotton tank top  
 clothing::tops::sleeveless tops  
 tucked-in  
 Layer 1

brown asymmetric coat  
 Asymmetric coat  
 clothing::coats::knee-length  
 coats  
 worn open  
 Layer 2

black leather midi skirt  
 Leather midi skirt  
 clothing::skirts::midi skirts

black leather Mary Jane pumps  
 Leather Mary Jane pumps  
 shoes::pumps::high-heel  
 pumps

black Re-Nylon tote bag  
 Moon Re-Nylon tote bag  
 bags::shoulder bags

Reference



IP-Adapter



BootComp



OmniTry



FastFit



GPT-4o (N Ref)



GPT-4o (2 Ref)



Seedream 4.0 (N Ref)



Seedream 4.0 (2 Ref)



NB (N Ref)



NB (2 Ref)



QIE-2509 (N Ref)



QIE-2509 (2 Ref)



NBP (N Ref)



NBP (2 Ref)



QIE-2509 (2 Ref) + FT



GT

Figure S10. More comparison results on Garments2Look test set (1/5).



**multicoloured striped cotton shirt**  
 Striped cotton shirt  
 clothing::tops::long-sleeved tops  
 partially unbuttoned, sleeves rolled-up, front-tucked

**white denim shorts**  
 Kate denim shorts  
 clothing::shorts::denim worn open

**beige raffia slide sandals**  
 Ineni raffia slides  
 shoes::sandals::flat sandals

**beige raffia pouch**  
 Cassandre Large raffia pouch  
 bags::pouches

**tan leather belt**  
 Leather belt  
 accessories::belts

Reference



IP-Adapter



BootComp



OmniTry



FastFit



GPT-4o (N Ref)



GPT-4o (2 Ref)



Seedream 4.0 (N Ref)



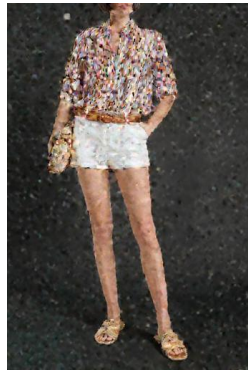
Seedream 4.0 (2 Ref)



NB (N Ref)



NB (2 Ref)



QIE-2509 (N Ref)



QIE-2509 (2 Ref)



NBP (N Ref)



NBP (2 Ref)



QIE-2509 (2 Ref) + FT



GT

Figure S11. More comparison results on Garments2Look test set (2/5).



**dress**  
Embroidered cotton jersey and tulle dress  
clothing::girls' dresses  
Layer 1

**white down vest**  
Ghany down vest  
clothing::girls' jackets  
unbuttoned  
Layer 2

**blue wool cardigan**  
Giovanna wool cardigan  
clothing::girls' knitwear::girls' cardigans & vests  
tied around shoulders  
Layer 3

**beige appliqué cotton-blend sweatpants**  
Lou appliqué cotton-blend sweatpants  
clothing::girls' sweatpants

**green leather ballet flats**  
Dory leather ballet flats  
shoes::girls' loafers & ballet flats

**black bow headband**  
Jin Liberty headband  
accessories::headbands

Reference



IP-Adapter



BootComp



OmniTry



FastFit



GPT-4o (N Ref)



GPT-4o (2 Ref)



Seedream 4.0 (N Ref)



Seedream 4.0 (2 Ref)



NB (N Ref)



NB (2 Ref)



QIE-2509 (N Ref)



QIE-2509 (2 Ref)



NBP (N Ref)



NBP (2 Ref)

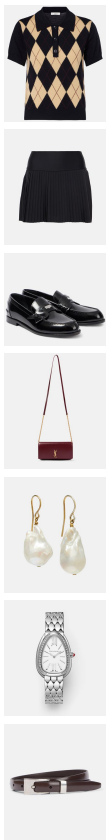


QIE-2509 (2 Ref) + FT



GT

Figure S12. More comparison results on Garments2Look test set (3/5).



**blue argyle wool polo shirt**  
Argyle wool polo shirt  
clothing::tops::short-sleeved tops  
tucked-in

**black pleated tennis skirt**  
Grand Slam pleated tennis skirt  
clothing::activewear::skirts

**black leather loafers**  
Penny leather loafers  
shoes::loafers

**burgundy leather crossbody bag**  
Cassandre leather crossbody bag  
bags::crossbody bags  
worn crossbody

**gold drop earrings with freshwater pearls**  
Drop earrings with freshwater pearls  
jewelry::fashion jewelry::earrings

**silver watch with diamonds**  
Serpenti Seduttori watch with diamonds  
jewelry::watches::watches

**brown leather belt**  
Downtown leather belt  
accessories::belts

Reference



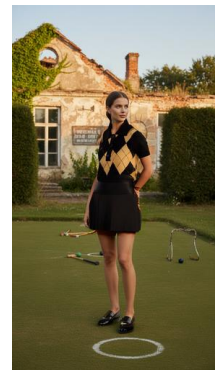
IP-Adapter



BootComp



OmniTry



FastFit



GPT-4o (N Ref)



GPT-4o (2 Ref)



Seedream 4.0 (N Ref)



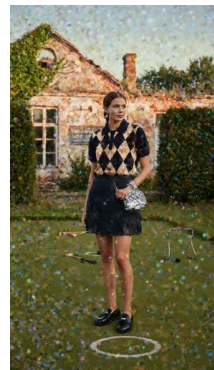
Seedream 4.0 (2 Ref)



NB (N Ref)



NB (2 Ref)



QIE-2509 (N Ref)



QIE-2509 (2 Ref)



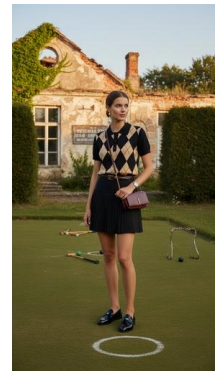
NBP (N Ref)



NBP (2 Ref)

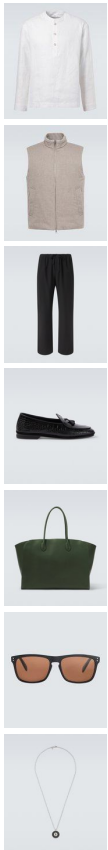


QIE-2509 (2 Ref) + FT



GT

Figure S13. More comparison results on Garments2Look test set (4/5).



**white shirt**  
 Linen shirt  
 clothing::shirts::casual::long-sleeved shirts  
 tucked-in  
 Layer 1

**neutral cashmere down vest**  
 Cashmere down vest  
 clothing::jackets::vests  
 unbuttoned  
 Layer 3

**black cotton and silk wide-leg pants**  
 Xon cotton and silk wide-leg pants  
 clothing::pants::drawstring  
 drawstring tied

**black croc-effect leather loafers**  
 Murphy Loira croc-effect leather loafers  
 shoes::loafers

**green leather tote bag**  
 Marlo leather tote bag  
 bags::totes

**black square-frame acetate sunglasses**  
 Square-frame acetate sunglasses  
 accessories::sunglasses  
 worn on face

**necklace**  
 14kt white gold necklace with diamonds  
 accessories::jewelry::fine jewelry::necklaces

Reference



IP-Adapter



BootComp



OmniTry



FastFit



GPT-4o (N Ref)



GPT-4o (2 Ref)



Seedream 4.0 (N Ref)



Seedream 4.0 (2 Ref)



NB (N Ref)



NB (2 Ref)



QIE-2509 (N Ref)



QIE-2509 (2 Ref)



NBP (N Ref)



NBP (2 Ref)



QIE-2509 (2 Ref) + FT



GT

Figure S14. More comparison results on Garments2Look test set (5/5).