

Blend-Aware Latent Diffusion: Mitigating Stitched Seams in Image Inpainting

Supplementary Material

1. More qualitative results

We present additional results based on SD-1.5, as shown in Fig. 9, Fig. 10, Fig. 11 and Fig. 12. These figures illustrate the comparative results of inpainting and outpainting tasks against other methods.

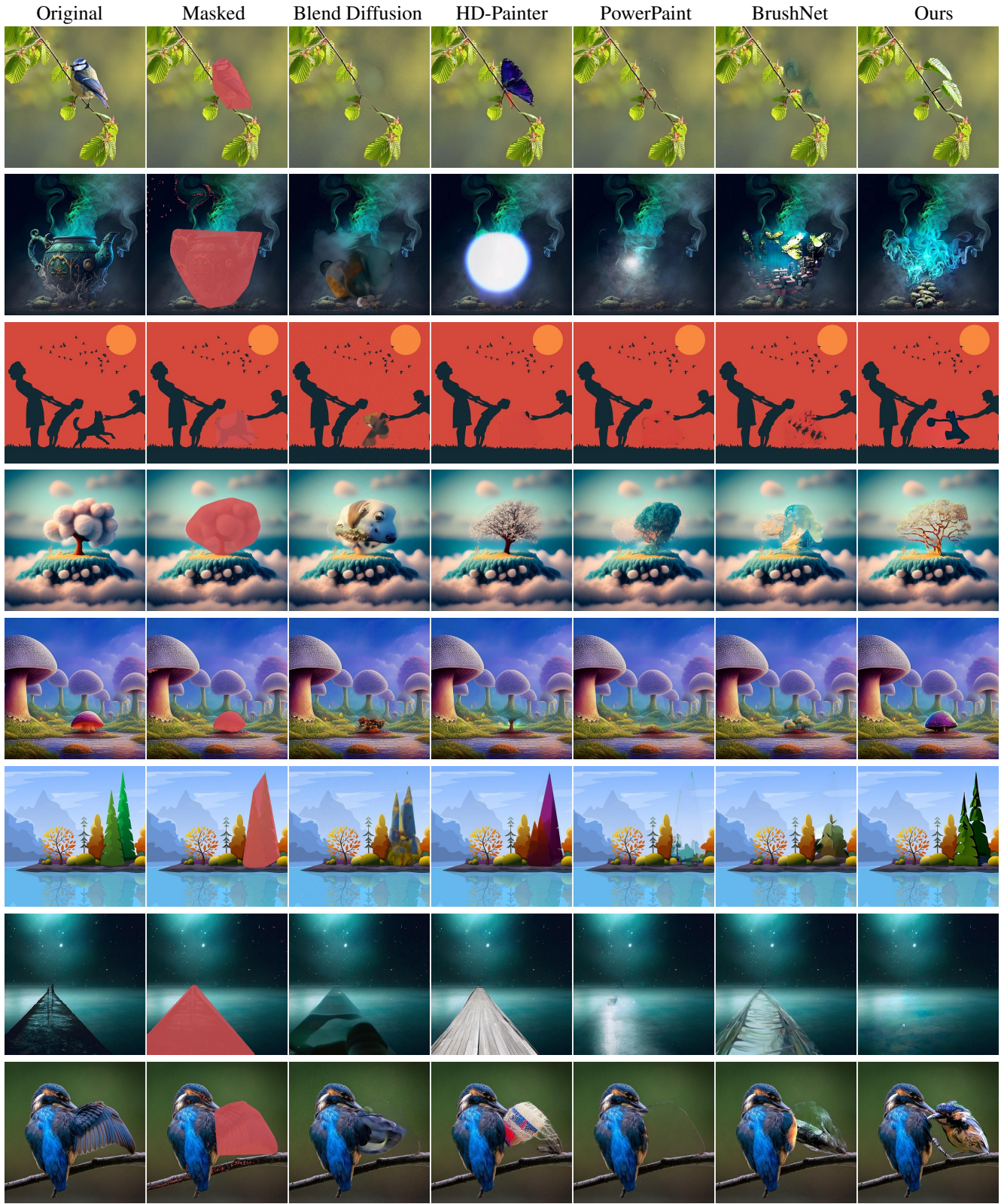


Figure 9. More comparison of boundary continuity between our method and other approaches for inpainting.(We encourage readers to zoom in to better observe the details.)



Figure 10. More comparison of content consistency between our method and other approaches for inpainting.

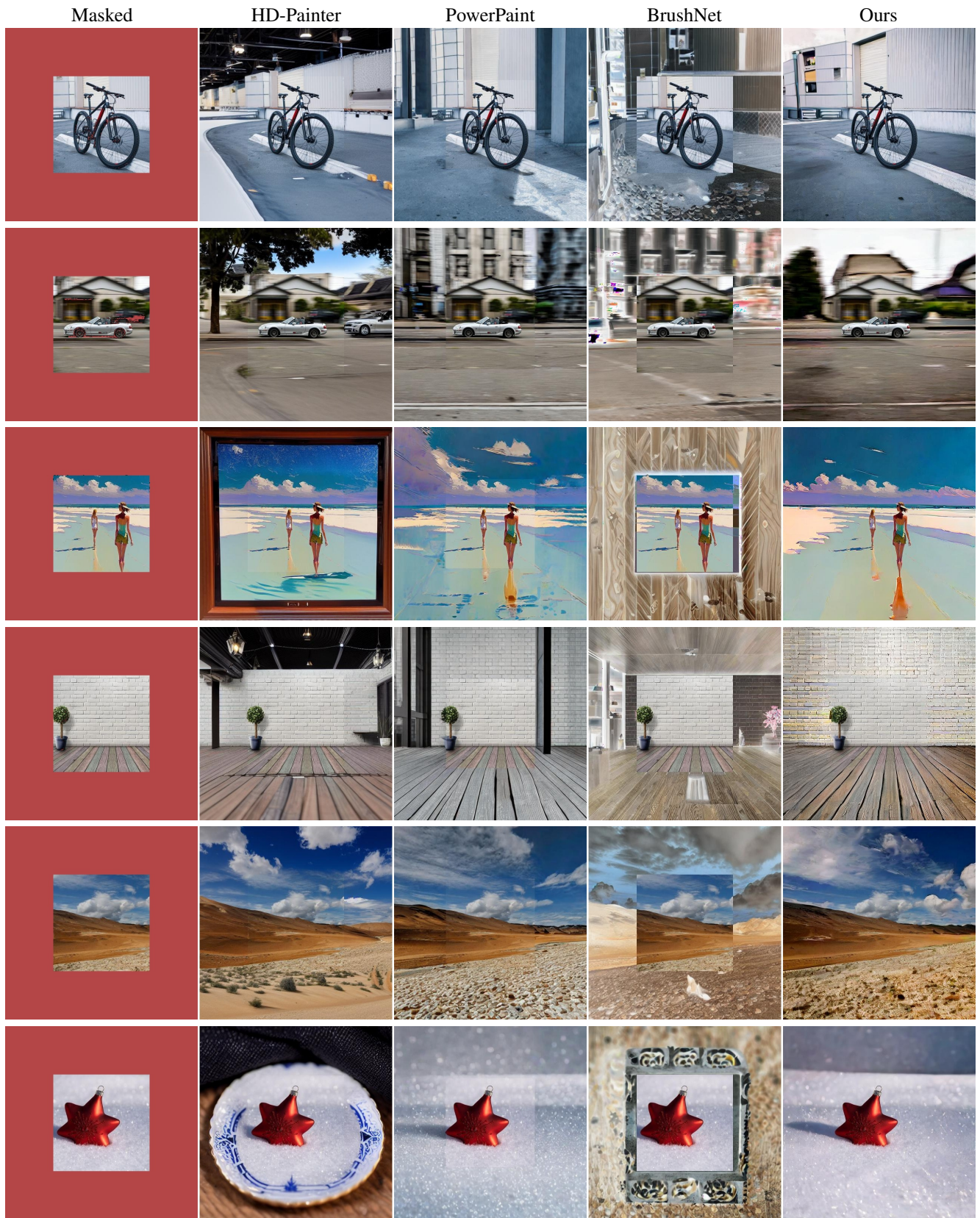


Figure 11. More comparison of boundary continuity between our method and other approaches for outpainting. (We encourage readers to zoom in to better observe the details.)

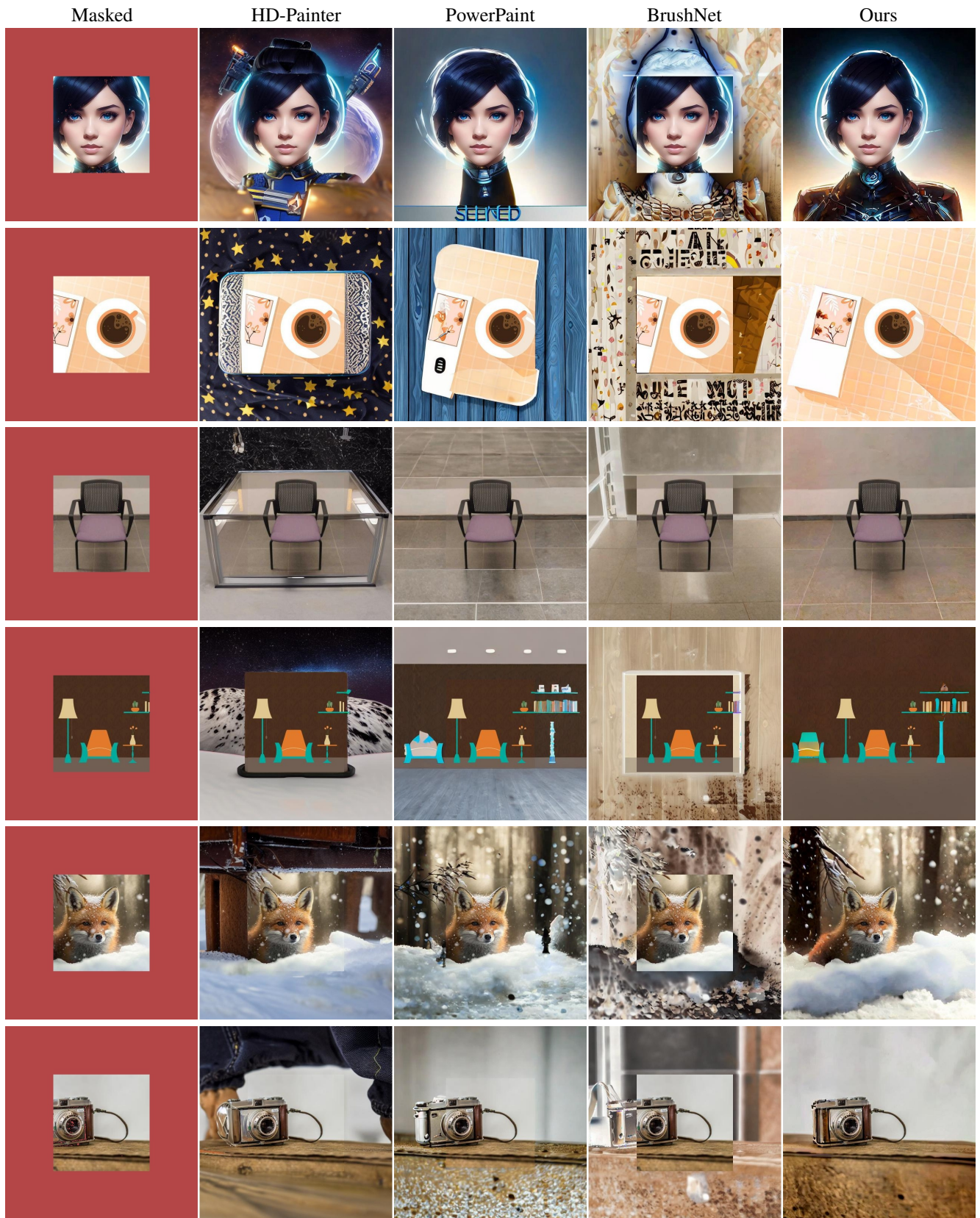


Figure 12. More comparison of content consistency between our method and other approaches for outpainting.