

Detail Me More: Improving GAN’s photo-realism of complex scenes

Raghudeep Gadde
Amazon

Qianli Feng
Amazon

Aleix M Martinez
Amazon

Here we provide more qualitative results using the proposed DMM approach. Figure 4 shows sample images from the DMM-StyleGAN2 model trained on DeepRooms dataset. In order to compare the quality of samples, we show results from five GAN models including the proposed DMM-StyleGAN2 on the DeepRooms, Cityscapes and LSUN-livingroom datasets in Figures 5, 6 and 7.



Figure 4: **Qualitative results on DeepRooms dataset.** Samples at 1024×1024 from the proposed DMM-StyleGAN2 model. Notice the photo-realism around objects.

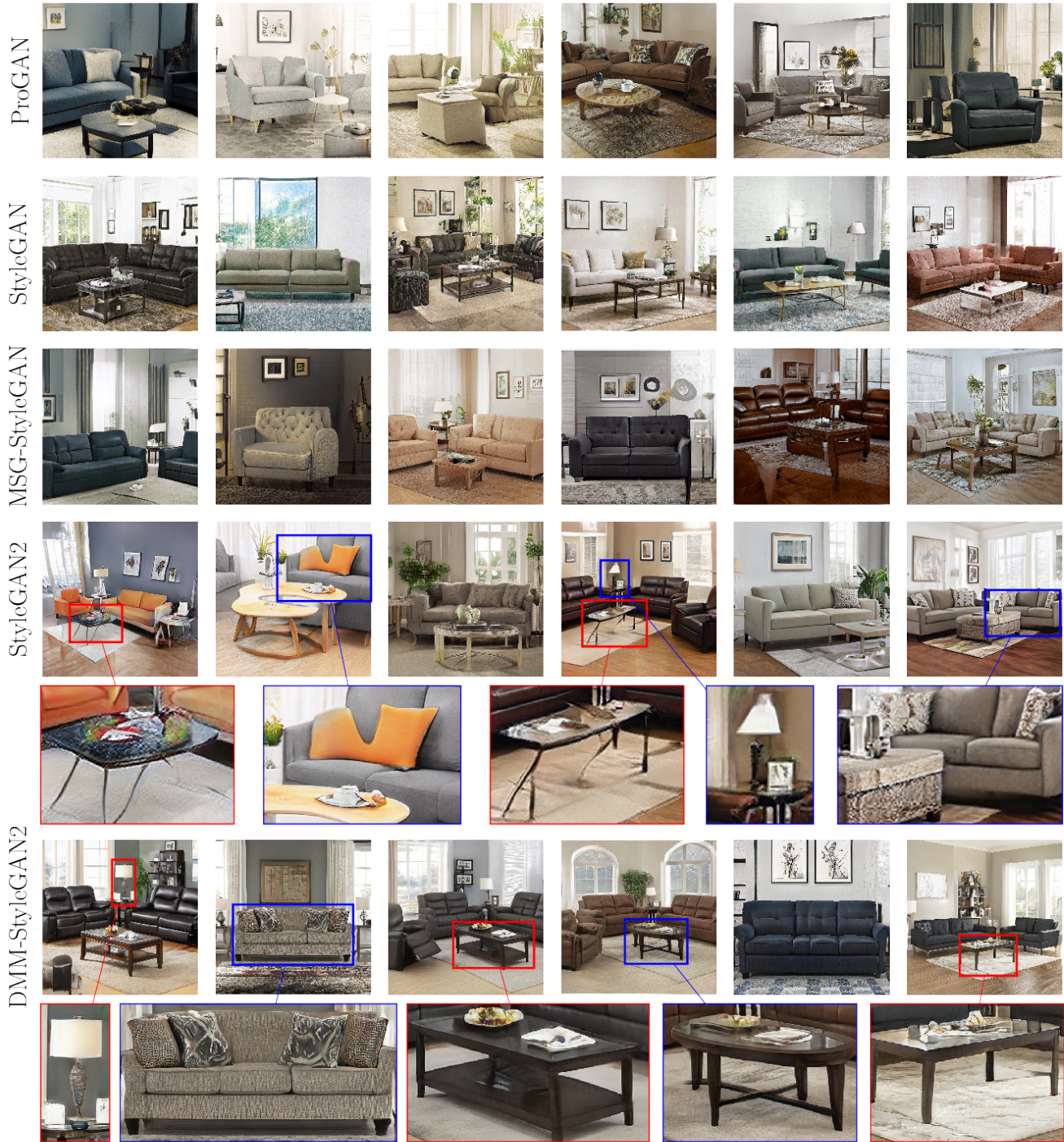


Figure 5: **Comparative results on DeepRooms dataset.** Each row from the top shows samples at 1024×1024 resolution drawn from ProGAN, StyleGAN, MSG-StyleGAN, StyleGAN2 and proposed DMM-StyleGAN2 models. For easy comparison we show zoom-ups of objects in images from StyleGAN2 and DMM-StyleGAN2.



Figure 6: Comparative results on Cityscapes dataset at 1024×1024 resolution.

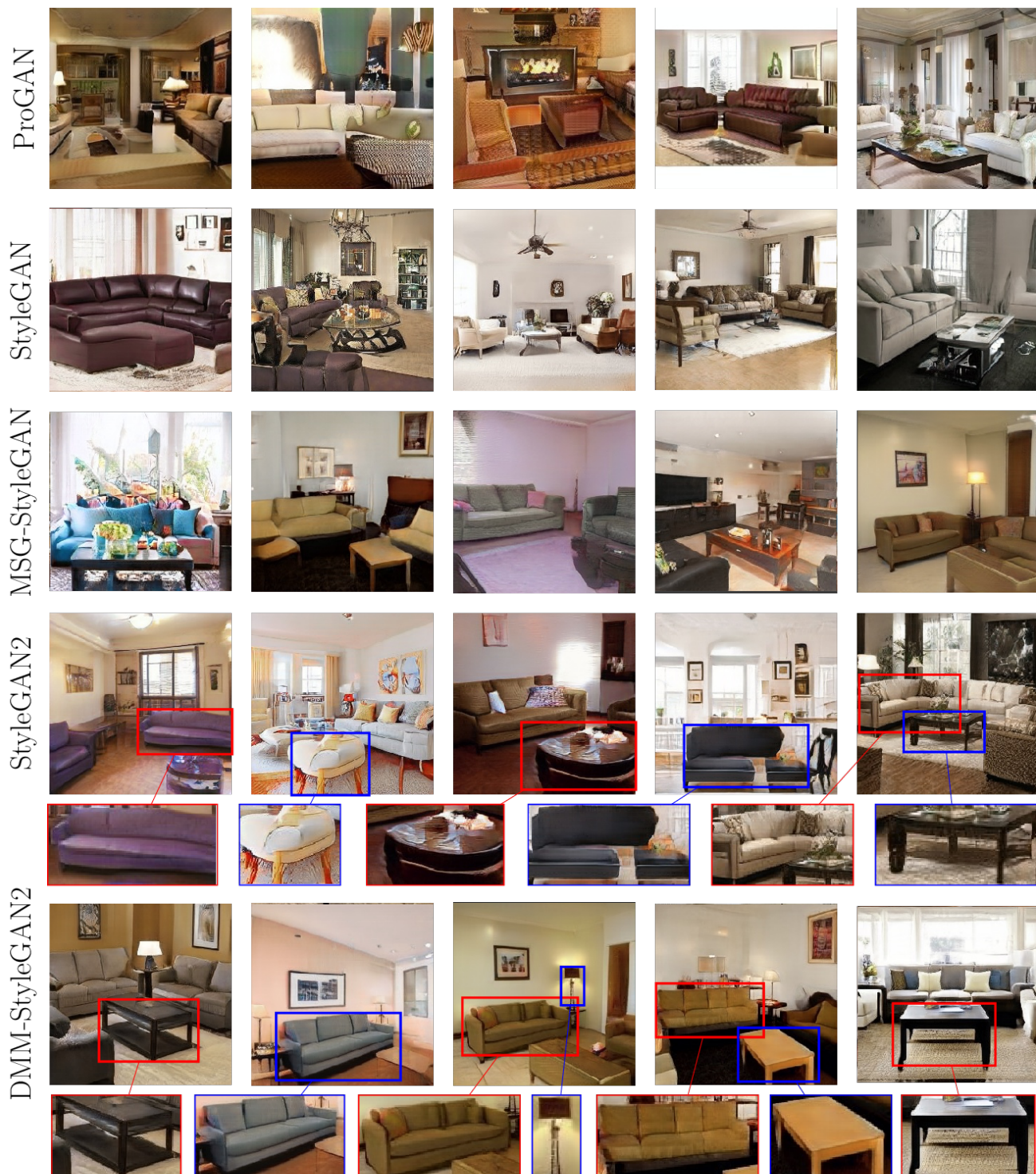


Figure 7: Comparative results on LSUN-LivingRoom dataset at 256×256 resolution.