

Improving the Pair Selection and the Model Fusion Steps of Satellite Multi-View Stereo Pipelines

(Supplementary material)

Alvaro Gómez, Gregory Randall
Facultad de Ingeniería
Universidad de la República, Uruguay
agomez@fing.edu.uy

Gabriele Facciolo, Rafael Grompone von Gioi
Centre Borelli
ENS Paris-Saclay, France

1. Supplementary material

Figure 1 and Figure 2 present more examples of the plots in Figure 5 of the paper.

Figures 3, 4 and 5 present more examples of the images in Figure 7 of the paper.

Please refer to the corresponding captions in the paper.

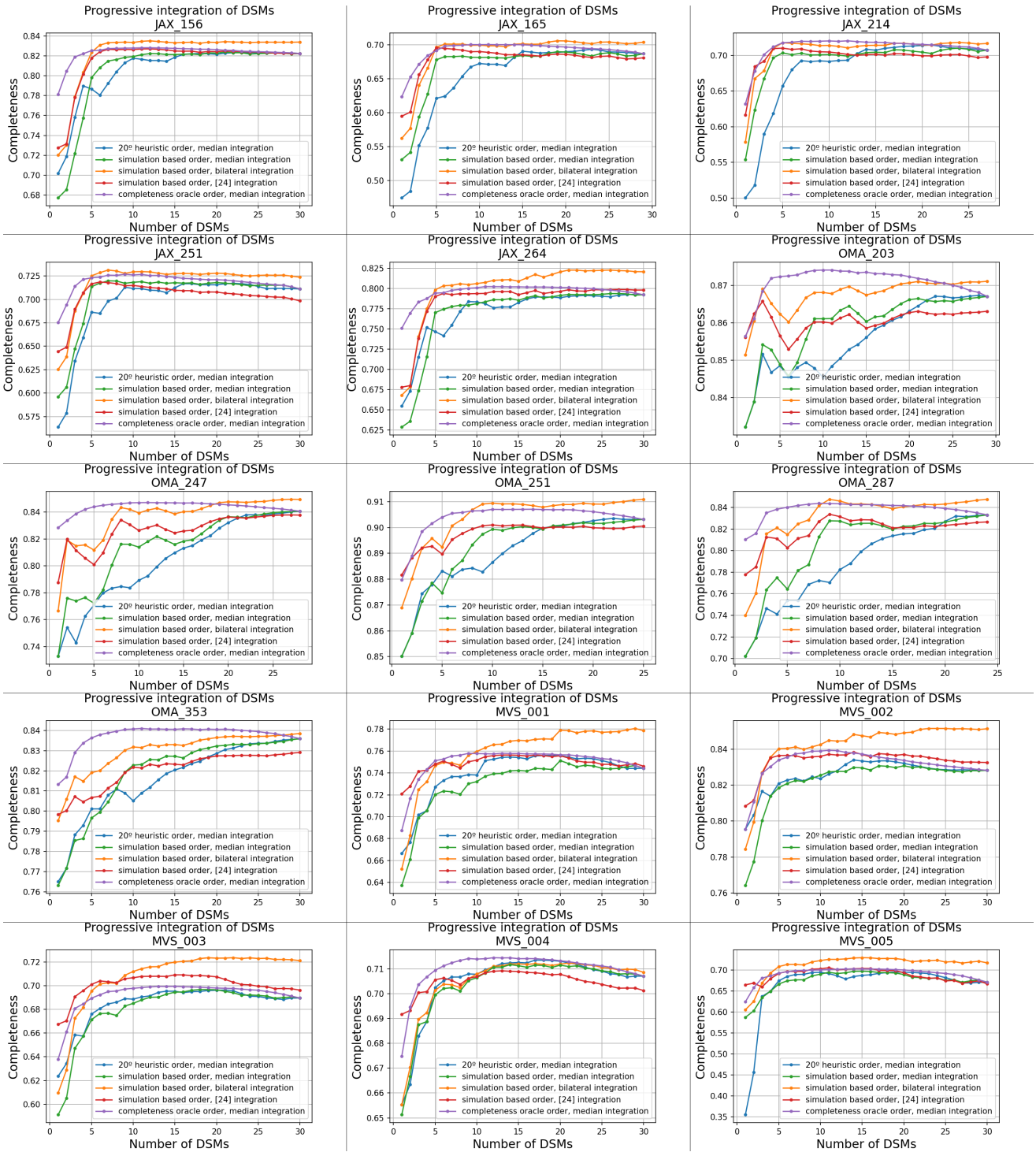


Figure 1. Progressive integration of DSMs for several regions. Completeness metric.

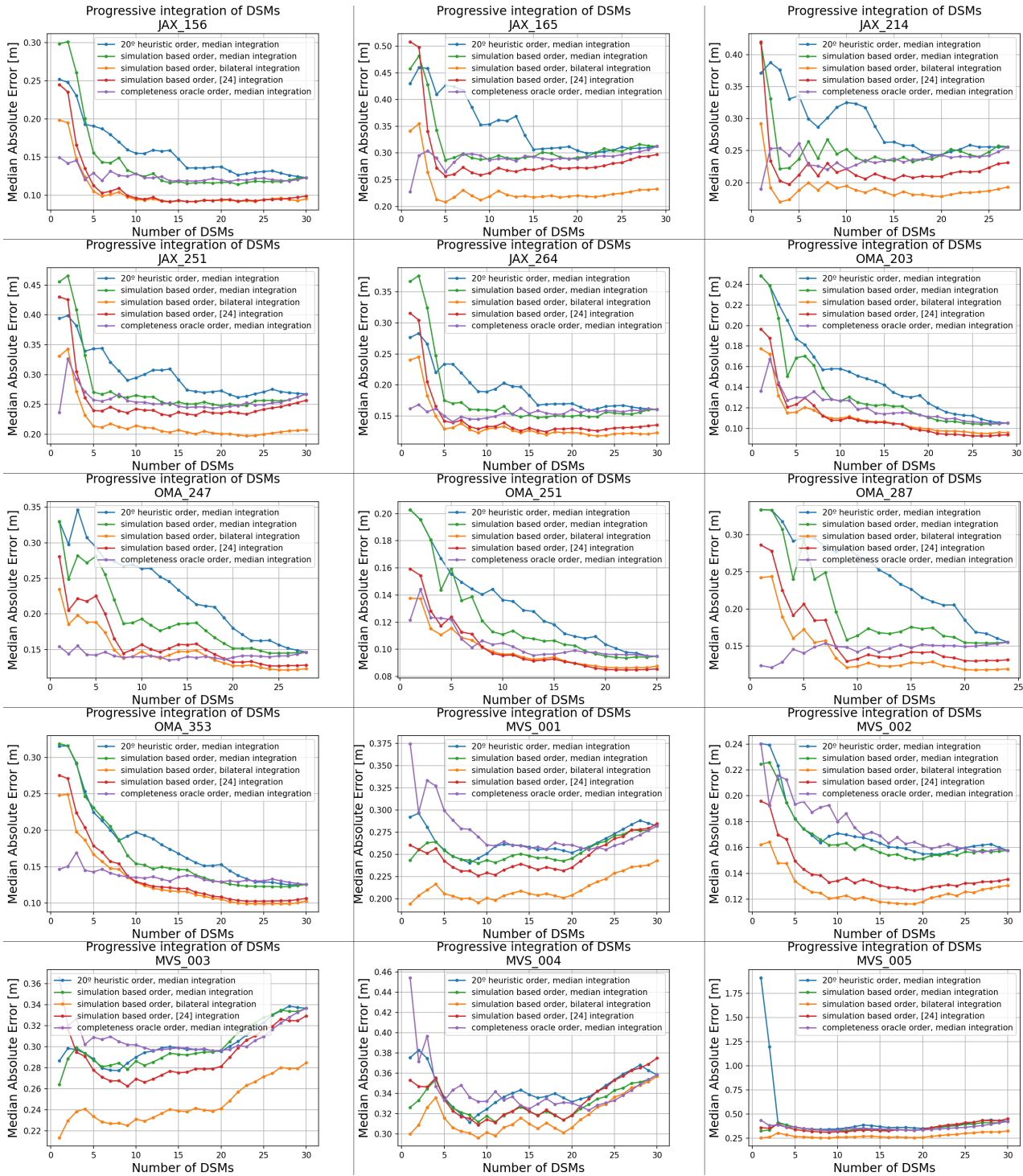


Figure 2. Progressive integration of DSMs for several regions. Median absolute error metric.

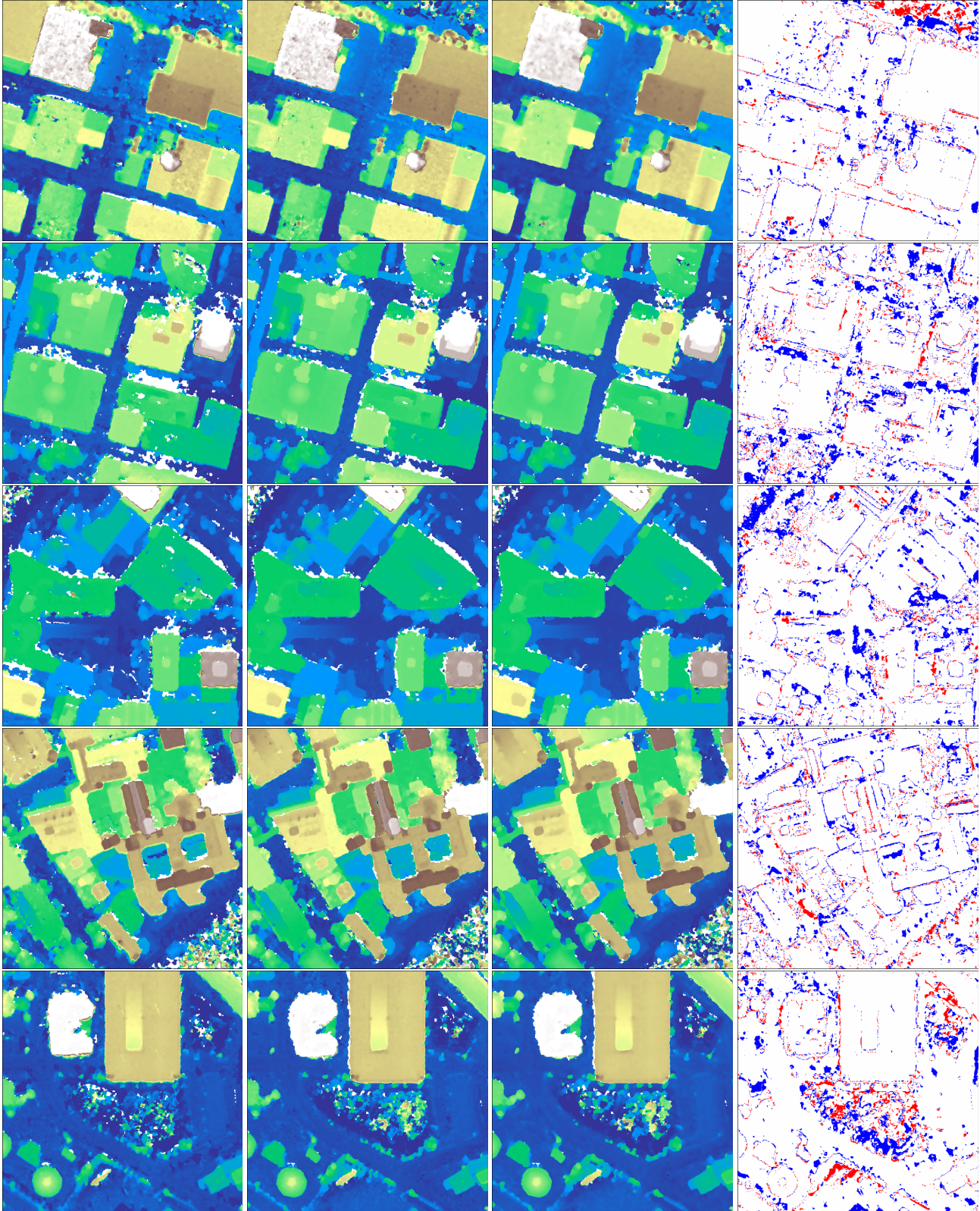


Figure 3. Results for regions from Jacksonville

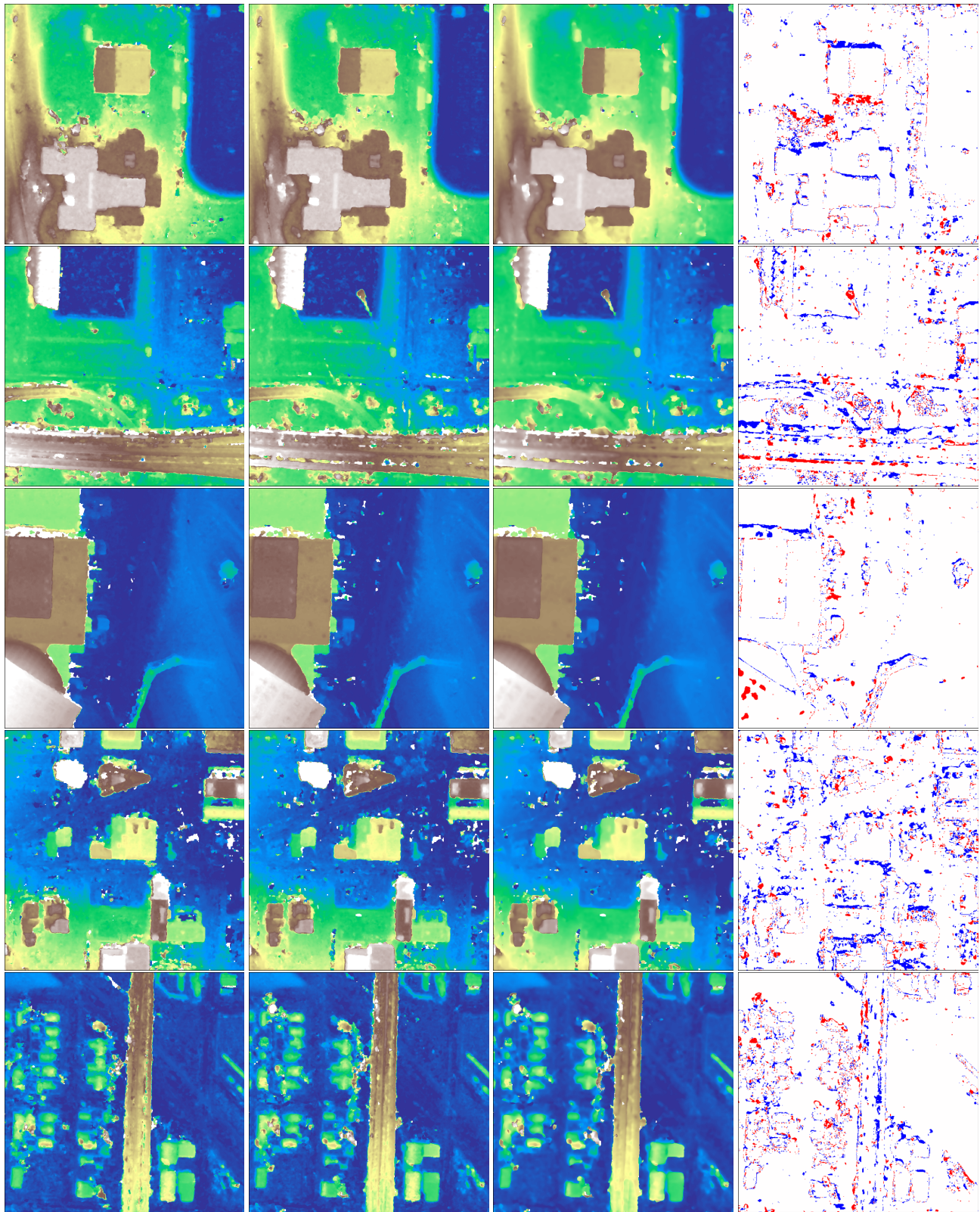


Figure 4. Results for regions from Omaha

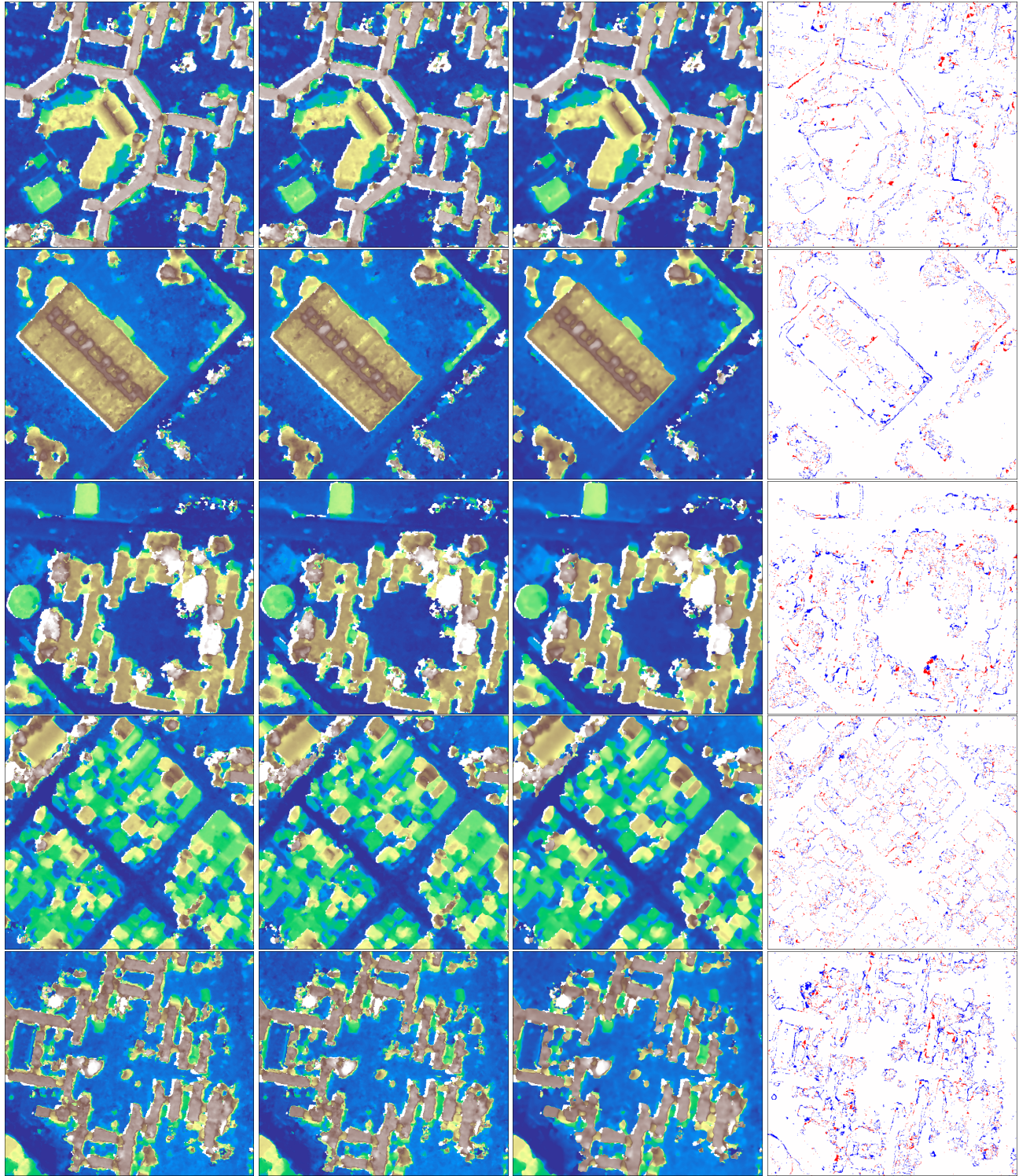


Figure 5. Results for regions from Buenos Aires