

# Supplementary Material: Modality-Aware Representation Learning for Zero-shot Sketch-based Image Retrieval

## A. Qualitative Results

We provide the full resolution of our qualitative results in Fig. S1 and S2. Note that we did not reproduce the baseline in the FG-SBIR settings as we did for categorical SBIR. Consequently, to compare qualitative results of instance-level SBIR, we selected identical queried sketches as those in the baseline paper. The retrieved photos in baseline column in Fig. S1 are sourced from the qualitative results presented in the baseline paper (Fig. 9 in their supplementary material).



Figure S1. **FG-ZS-SBIR**. Top-5 Retrieved images on Sketchy. Correct samples are circled.

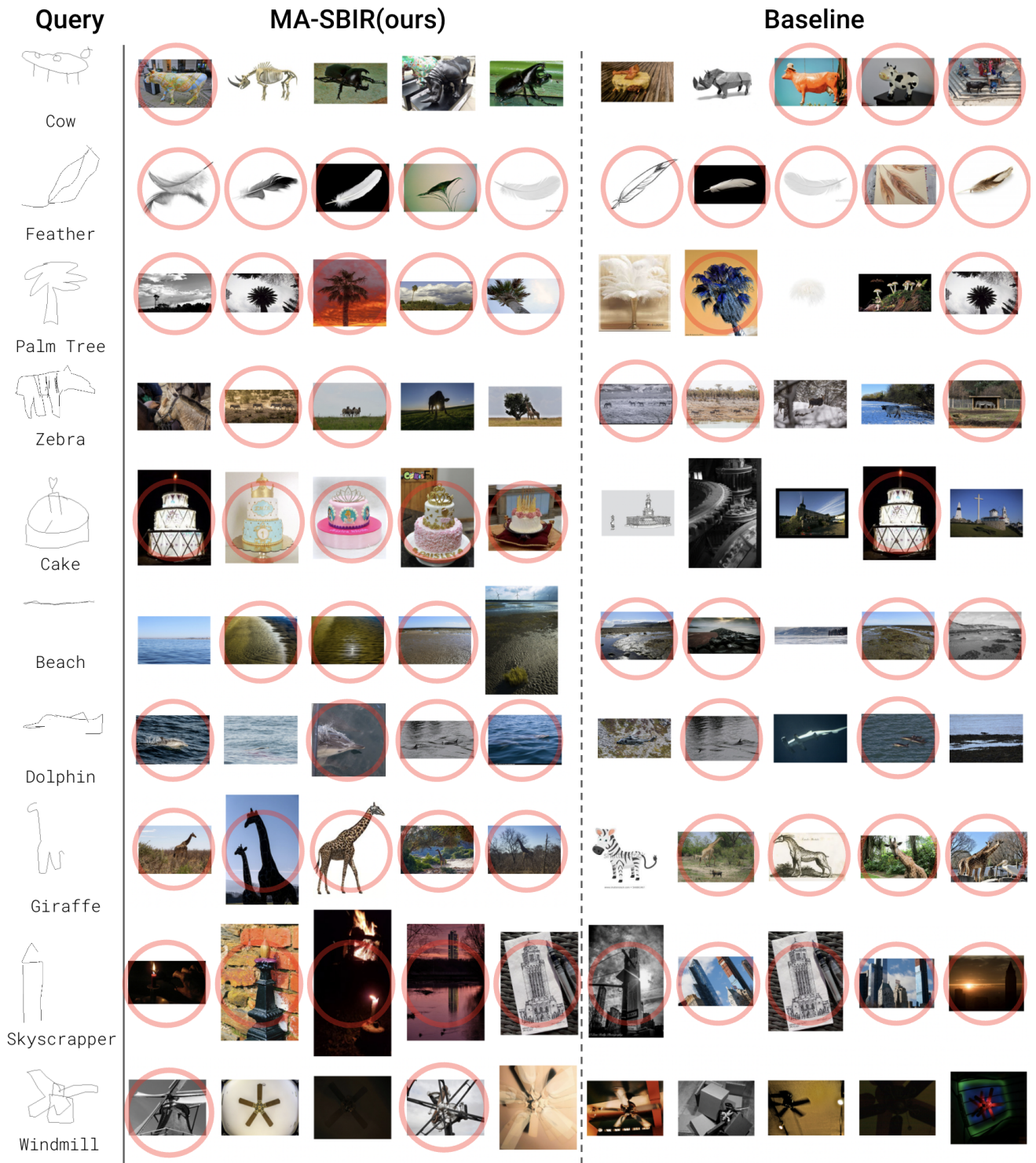


Figure S2. **Categorical-ZS-SBIR.** Top-5 Retrieved images on QuickDraw-Ext. Correct samples are circled.