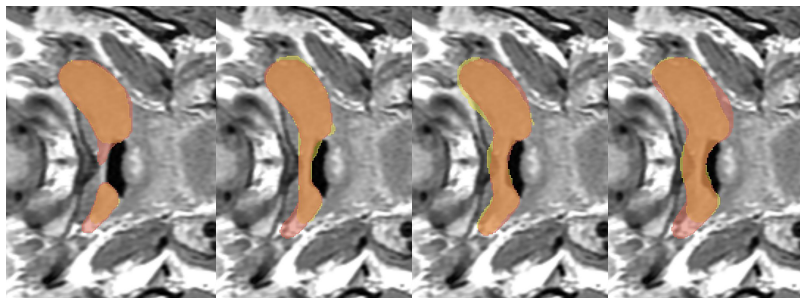


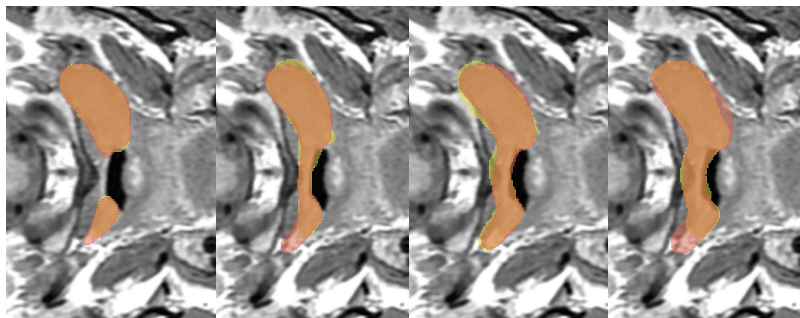
More random examples from the NPC-120 test set showing that our personalization network with only one annotation (*) or two annotations () per sample consistently outperforms the SOTA D-Persona model, which uses all 4 annotations per sample**

Yellow = Label
Overlapping orange = Prediction

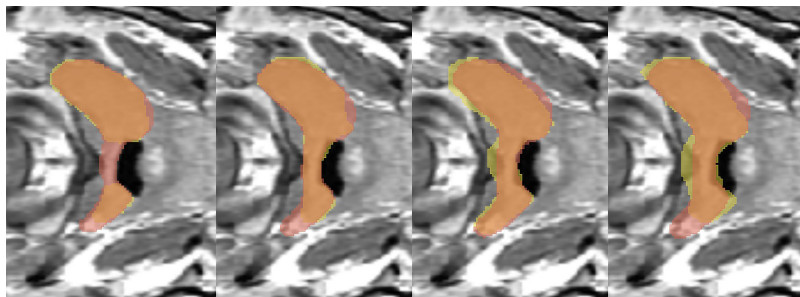
P-Diverse (Ours) Stage-I*



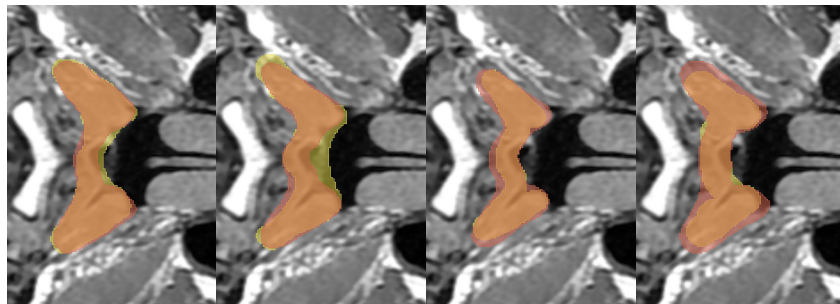
P-Diverse (Ours) Stage-I**



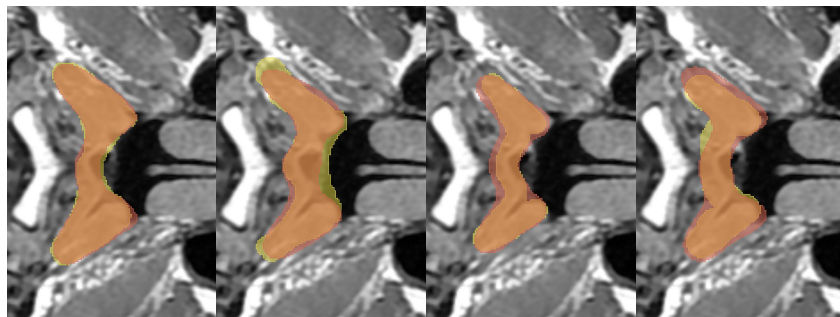
D-Persona Stage-II



P-Diverse (Ours) Stage-I*



P-Diverse (Ours) Stage-I**



D-Persona Stage-II

