

RiFeGAN: Rich Feature Generation for Text-to-Image Synthesis from Prior Knowledge

Jun Cheng^{1,2}, Fuxiang Wu^{1,2*}, Yanling Tian³, Lei Wang^{1,2}, Dapeng Tao⁴

¹ CAS Key Laboratory of Human-Machine Intelligence-Synergy Systems, Shenzhen Institutes of Advanced Technology, CAS, China

² The Chinese University of Hong Kong, Hong Kong, China

³ Graduate School of Information, Production and Systems, Waseda University, Japan

⁴ School of Information Science and Engineering, Yunnan University, China

{jun.cheng, fx.wu1, lei.wang1}@siat.ac.cn, tianyanling@fuji.waseda.jp, dptao@ynu.edu.cn

A. Training Details in Caption Matching

	<p>Positive</p> <ol style="list-style-type: none"> 1) this bird is brown with a lighter brown crest. 2) aquatic large bird with long hooked bill, white face, and brown body. 3) bird has brown body feathers, brown breast feathers, and brown beak. 4) this bird has a white superciliary and brown all around its body with a long bill. 5) this is a brown bird with a white face and a long downward pointing beak. 6) this bird is brown with white and has a long, pointy beak. 7) brown duck playing on the lake making a poodle. 8) this bird has wings that are brown and has a long bill. 9) this bird has long brown bill, with a brown body. 10) this is a medium sized brown bird, with a long pointed bill. 	<p>Negative</p> <ol style="list-style-type: none"> 1) this small bird is royal blue with gray-tipped feathers. 2) aquatic large bird with long hooked bill, white face, and brown body. 3) bird has brown body feathers, brown breast feathers, and brown beak. 4) this bird has a white superciliary and brown all around its body with a long bill. 5) this is a brown bird with a white face and a long downward pointing beak. 6) this bird is brown with white and has a long, pointy beak. 7) brown duck playing on the lake making a poodle. 8) this bird has wings that are brown and has a long bill. 9) this bird has long brown bill, with a brown body. 10) this is a medium sized brown bird, with a long pointed bill.
	<p>Positive</p> <ol style="list-style-type: none"> 1) this small bird is royal blue with gray-tipped feathers. 2) this is a small blue bird with black wings and a black beak. 3) a small sized blue bird that has a short pointed bill. 4) a small blue bird that has black wings and a black beak. 5) this is a tiny blue bird with a gray wings and a small black bill. 6) this bird is blue with black and has a very short beak. 7) this bird has wings that are blue and has a small bill. 8) this bird is mostly bright blue, with blue and grey wings. 9) this bird is mostly blue with black wings and a blue crown. 10) this bird is blue with black and has a long, pointy beak. 	<p>Negative</p> <ol style="list-style-type: none"> 1) this small bird is royal blue with gray-tipped feathers. 2) this is a small blue bird with black wings and a black beak. 3) a small sized blue bird that has a short pointed bill. 4) a small blue bird that has black wings and a black beak. 5) this is a tiny blue bird with a gray wings and a small black bill. 6) this bird is blue with black and has a very short beak. 7) this bird has wings that are blue and has a small bill. 8) this bird is mostly bright blue, with blue and grey wings. 9) this bird is mostly blue with black wings and a blue crown. 10) bird has brown body feathers, brown breast feathers, and brown beak.

Figure 1. Examples of positive and negative samples for training: captions in the middle are positive samples, and the right ones are negative samples, where the querying captions $\{t\}$ are masked as bold.

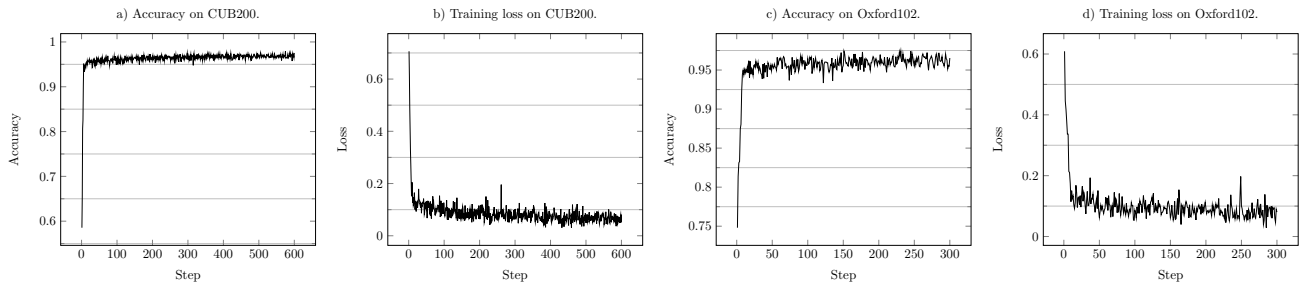


Figure 2. Accuracy and the training loss: we dynamically construct the samples for each training epoch and evaluation, as described in Section 3.1 of the main paper.

As described in Section 3.1 of the main paper, we treat captions of an image as a positive sample by selecting a caption as the query t . For its negative sample, another query is randomly selected from captions of an image belonging to a different class. For example, in Fig. 1, the captions in a middle black box are a positive sample, where the query t is marked as bold,

and the rest are its positive context. The captions in the right box are its negative sample by selecting a different querying caption, masked as a different color, as the negative caption. In training, we dynamically construct the positive and negative samples and evaluate the models every 2.5K samples, denoted as a step, as shown in Fig. 2. For training loss, we exploit the log sigmoid for numerical stability. The results show the models can distinguish the compatible context of a query from others effectively.

B. Additional Experiment Results

We present more semantically consistent experiments in Fig. 3 and more results about combining two captions in Fig. 4. In Fig. 5, we demonstrate the influence of N_{sel} in Our_F and Our_F^{SA} . Finally, we show the more enriching examples with the given captions in Fig. 6.

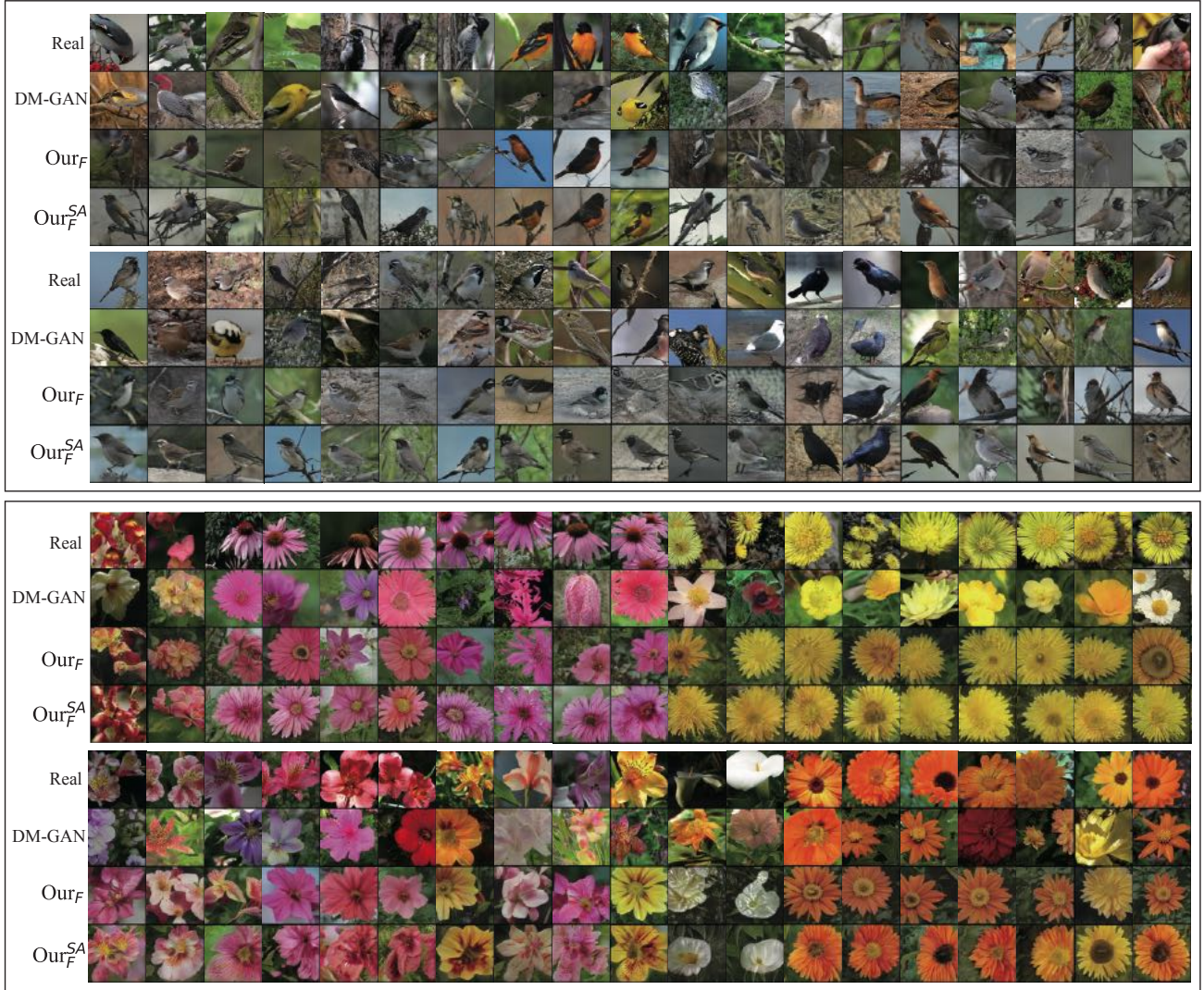


Figure 3. The images synthesized with the captions: Our_F and Our_F^{SA} synthesize more semantically consistent images with the real images than DM-GAN by using the original captions, while Our_F^{SA} is better than Our_F .



(a) 1. this bird is **red with white** and has a very **short beak**.
2. this bird has wings that are **black** and has a **white belly**.

The k-best prominent words of two captions in F_1^{attn} :
1. bird:1.000, **beak:0.233**, this:0.193, **short:0.121**, is:0.115, **white:0.050**, with:0.032, **red:0.028**, very:0.020
2. has:1.000, **white:0.444**, bird:0.335, this:0.218, belly:0.053, **black:0.036**, a:0.022, are:0.022, that:0.014

The k-best prominent words of two captions in F_2^{attn} :
1. this:1.000, bird:0.864, is:0.431, **beak:0.222**, **red:0.210**, **short:0.138**, white:0.128, a:0.109, very:0.106
2. belly:1.000, a:0.688, **white:0.627**, **black:0.584**, this:0.564, bird:0.540, has:0.423, wings:0.318, has:0.306



(c) 1. this is a **white** bird with a **brown** crown and a **black** bill.
2. a small bird with **brown white** and **black** feathers for its wings.

The k-best prominent words of two captions in F_1^{attn} :
1. with:1.000, a:0.566, bill:0.501, is:0.450, bird:0.265, this:0.223, **black:0.188**, **white:0.136**, **brown:0.034**
2. with:1.000, bird:0.352, small:0.282, a:0.204, its:0.155, wings:0.122, **white:0.047**, for:0.039, **brown:0.039**

The k-best prominent words of two captions in F_2^{attn} :
1. is:1.000, this:0.870, bird:0.830, with:0.748, a:0.720, a:0.710, **white:0.616**, **black:0.489**, bill:0.414, a:0.347
2. a:1.000, black:0.740, bird:0.682, small:0.655, wings:0.599, its:0.520, for:0.502, with:0.423, **brown:0.228**



(e) 1. a **small round yellow** bird with **gray** wings and black eyerings.
2. a **medium** sized bird with a **gray** body on most of its body.

The k-best prominent words of two captions in F_1^{attn} :
1. small:1.000, a:0.498, with:0.402, **round:0.293**, eyerings:0.266, and:0.249, black:0.203, **yellow:0.158**
2. **medium:1.000**, of:0.602, with:0.568, bird:0.517, sized:0.415, its:0.381, a:0.341, **gray:0.338**, body:0.107

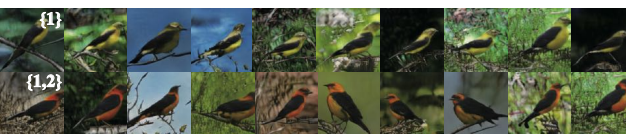
The k-best prominent words of two captions in F_2^{attn} :
1. **gray:1.000**, eyerings:0.490, wings:0.463, **yellow:0.326**, with:0.295, and:0.227, a:0.199, **black:0.193**
2. **medium:1.000**, sized:0.781, **gray:0.746**, a:0.611, body:0.582, bird:0.519, with:0.434, a:0.334, its:0.304



(g) 1. this **small** bird is mostly **tan** with **black** wings his head has a tuft that comes to a point.
2. a **medium** sized bird with a **gray** body on most of its body.

The k-best prominent words of two captions in F_1^{attn} :
1. bird:1.000, **small:0.171**, to:0.094, point:0.051, this:0.050, comes:0.044, a:0.029, is:0.026, that:0.017
2. **medium:1.000**, bird:0.680, with:0.523, sized:0.410, a:0.321, of:0.299, its:0.168, most:0.045, **gray:0.041**

The k-best prominent words of two captions in F_2^{attn} :
1. a:1.000, has:0.787, **tan:0.724**, is:0.708, bird:0.640, tuft:0.631, this:0.615, **black:0.542**, head:0.541
2. **medium:1.000**, a:0.815, sized:0.773, body:0.768, bird:0.637, **gray:0.568**, with:0.518, a:0.449, its:0.396



(i) 1. this particular bird has a **yellow** belly and breast and **black** secondaries.
2. this bird is **black and red** in color with a very **sharp** beak.

The k-best prominent words of two captions in F_1^{attn} :
1. bird:1.000, has:0.893, secondaries:0.333, particular:0.286, **black:0.253**, this:0.064, and:0.035, **yellow:0.021**
2. bird:1.000, beak:0.234, is:0.107, **sharp:0.067**, this:0.058, beak:0.045, **black:0.045**, a:0.011, very:0.010

The k-best prominent words of two captions in F_2^{attn} :
1. **black:1.000**, secondaries:0.515, and:0.437, and:0.370, breast:0.324, **yellow:0.264**, belly:0.188, bird:0.178
2. **black:1.000**, beak:0.843, bird:0.726, and:0.678, this:0.654, **red:0.499**, is:0.445, sharp:0.382, with:0.236



(b) 1. petals are **oval** in shape they are **light pink** in color.
2. the petals on this flower are **pink** with **orange** stamen.

The k-best prominent words of two captions in F_1^{attn} :
1. are:1.000, petals:0.907, **oval:0.874**, **pink:0.684**, shape:0.617, in:0.593, **light:0.399**, are:0.370, they:0.293
2. petals:1.000, **pink:0.787**, the:0.541, are:0.439, this:0.419, on:0.413, flower:0.381, stamen:0.276, **orange:0.140**

The k-best prominent words of two captions in F_2^{attn} :
1. **pink:1.000**, color:0.273, in:0.245, **light:0.239**, are:0.228, are:0.205, shape:0.190, **oval:0.184**, they:0.183
2. **pink:1.000**, this:0.332, **orange:0.318**, are:0.307, flower:0.264, the:0.259, stamen:0.223, on:0.185, petals:0.174



(d) 1. this is a **pink** flower with a large and thick **orange** pistil.
2. this flower has a **round brown** center and **long pink** petals.

The k-best prominent words of two captions in F_1^{attn} :
1. **pink:1.000**, a:0.781, is:0.579, this:0.463, pistil:0.279, flower:0.155, **orange:0.155**, with:0.133, a:0.117
2. flower:1.000, **pink:0.896**, has:0.795, this:0.767, **long:0.748**, a:0.565, **brown:0.406**, and:0.337, center:0.325

The k-best prominent words of two captions in F_2^{attn} :
1. **pink:1.000**, a:0.374, is:0.298, this:0.295, pistil:0.227, **orange:0.218**, thick:0.178, flower:0.161, with:0.097
2. this:1.000, flower:0.945, a:0.727, has:0.697, **pink:0.496**, petals:0.355, **brown:0.340**, **round:0.300**, center:0.294



(f) 1. the petals on this flower are **purple** with **no visible** stamen.
2. a **white** flower with a golden and **purple** center.

The k-best prominent words of two captions in F_1^{attn} :
1. petals:1.000, **no:0.781**, **visible:0.776**, the:0.583, on:0.549, **purple:0.520**, are:0.344, stamen:0.342, this:0.341
2. with:1.000, a:0.656, flower:0.586, a:0.492, **white:0.426**, golden:0.204, center:0.190, **purple:0.120**, and:0.063

The k-best prominent words of two captions in F_2^{attn} :
1. flower:1.000, are:0.827, flower:0.648, this:0.647, **no:0.638**, on:0.507, the:0.397, petals:0.390, with:0.366
2. **white:1.000**, **purple:0.466**, a:0.345, flower:0.322, a:0.245, with:0.196, and:0.171, center:0.154, golden:0.153



(h) 1. a flower with **thin long pink** petals central cluster of **orange** stamen.
2. petals are **oval** in shape they are **light purple** in color.

The k-best prominent words of two captions in F_1^{attn} :
1. flower:1.000, **thin:0.884**, with:0.859, **pink:0.817**, a:0.815, **long:0.380**, stamen:0.302, petals:0.166
2. petals:1.000, are:0.955, **oval:0.733**, in:0.483, shape:0.459, light:0.322, **purple:0.293**, are:0.285, they:0.249

The k-best prominent words of two captions in F_2^{attn} :
1. **pink:1.000**, flower:0.522, a:0.519, with:0.364, **orange:0.320**, **thin:0.272**, **long:0.246**, central:0.129
2. **purple:1.000**, light:0.906, color:0.849, in:0.631, shape:0.596, are:0.501, are:0.481, **oval:0.476**, in:0.439



(j) 1. this flower has many long narrow petals that are **pink** around an **orange** center.
2. this flower has many long narrow petals that are **blue** around an **orange** center.

The k-best prominent words of two captions in F_1^{attn} :
1. flower:1.000, has:0.813, this:0.743, **pink:0.476**, many:0.376, center:0.371, narrow:0.369, **orange:0.220**
2. flower:1.000, has:0.906, this:0.661, petals:0.502, narrow:0.469, **blue:0.452**, many:0.411, that:0.245, long:0.218

The k-best prominent words of two captions in F_2^{attn} :
1. **orange:1.000**, this:0.923, flower:0.896, has:0.824, **pink:0.726**, many:0.626, long:0.505, an:0.291, center:0.280
2. **orange:1.000**, long:0.588, has:0.442, flower:0.428, many:0.390, this:0.379, are:0.312, **blue:0.302**, center:0.294

Figure 4. Examples synthesized by two captions: the bold black words indicate prominent visual details, while the red words indicate conflicting visual details in captions. Words in black boxes are prominent features in generating steps, specifically, F_1^{attn} and F_2^{attn} .

- 1) the bird has **white throat**, **gray breast** and **white belly** and **abdomen**, it has **sharp** and **pointed beak**.
- 2) this bird is **small** with a **short beak** and has long tail feathers.
- 3) this is a **grey belly** with a **brown head** and a **small pointy beak**.
- 4) **golden brown colored** back and head, **dark colored** wings and tail, and a **white belly** and **breast**.
- 5) this bird is **brown** and **white** in color with a sharp **brown beak**, and **brown eye rings**.
- 6) this bird is **small** and compact, with a short **pointed bill**, **white belly**, and tan feathers ending.
- 7) a bird with a **brown beak**, **brown head**, **grey body** with **brown wings** with black wing tips.
- 8) this bird has wings that are **brown** and has a **white belly**.
- 9) a **small bird** with **purple feathers** on its breast and green feathers on its abdomen.
- 10) this brown bird has a periwinkle chest, **black-accented primaries**, a small **sharp beak**.



- 1) medium sized **black bird** with **light colored tan** feathers on its body with **spots of white**.
- 2) this bird has a split tail with **blue undertails** coverts - the crown is **dark black**.
- 3) light **brown** bird, with a light belly and **dark black head, tail, and nape**.
- 4) lemon breasted and bellied bird with **orange throat** and **black head**.
- 5) this bird has a **fluffy tan underside**, a **reddish-orange band** on the nape of its neck, a split **black tail**.
- 6) this bird has a **dark black face** and **head**, **white** and **light orange breast** belly and vent, and a **red face**.
- 7) a small bird with **brown** and **black coloring**, and blue on the underside of its wings.
- 8) this bird has wings that are **blue** and has a **white belly**.
- 9) this bird has a **black crown** with an orange throat and **light orange belly**.
- 10) this bird has a **peach colored belly** and **breast** with a black stripe around the throat, a **small beak**.



- 1) this bird has a **white throat** that extends to the breast, **black body**, a long, pointed **black bill**.
- 2) this is a white bird with a **black head** and a **yellow crown**.
- 3) a small bird with **yellow crown**, **white throat** and **breast** and **grey belly**.
- 4) this bird has a **yellow crown**, a long flat **black bill**, a **white breast**, and a black belly.
- 5) a small bird with a **white belly**, and a **yellow top** on crown.
- 6) this bird has wings that are **black** and has a **white chest**.
- 7) this bird is **white with black** and has a long, **pointy beak**.
- 8) smallish bird with a **bright yellow crown**, it has a **black head** and **black bill**.
- 9) this bird has wings that are **black** and has a **yellow crown**.
- 10) the bird has a **bright yellow brown**, a **cream belly** and throat, and a **black nape**.



- 1) a mostly **yellow** bird with **black** and **white** wings and **black eyes**.
- 2) small bird with **white nape** and **belly**, brown wings with **white wing bars**, brown outer rectrices.
- 3) bird has **brown body** feathers, **yellow breast** feather, and **pointed beak**.
- 4) this bird has a **yellow breast** and **head** and a **black** and **white wing**.
- 5) this bird has a **yellow head**, **chest**, **belly** and tail and **black** and **white wing** feathers.
- 6) the bird has a pink bill, **yellow crown** and **breast**, and **black** and **white striped** wings.
- 7) this bird has wings that are **black** and **white** and has a **yellow belly**.
- 8) this bird has wings that are **black** and has a **yellow belly**.
- 9) a bird with **black primaries**, white secondaries and a **yellow breast** and **belly**.
- 10) this bird has wings that are **grey** and **black** and has a **yellow belly**.



- 1) **black** and **white** feathered bird with **yellow head** feathers.
- 2) this is a **black** and **white** bird with a **yellow nape** on its head.
- 3) a small **black** and **white** bird with a **gray beak**.
- 4) a small bird with **black wings**, a white back and belly, and **white streaks** along its head.
- 5) this bird has a **black body**, a white belly, a **white malar stripe**, white eyebrows and a **yellow crown**.
- 6) although **primarily black**, a white this bird has a **yellow orange patch** on his crown.
- 7) an interesting bird with **black** and **white** covering most of the body, the wing tips being **black**.
- 8) the bird has a **patch of white feathers** on its back and it has **black** and **white wings**. it has a **white stripe**.
- 9) this **black** and **white spotted** bird has a **bright yellow crown**.
- 10) this bird has **black** and **white** fur and a slightly **long beak**.



N/A 1-1 1-2 1-3 1-4 1-5 1-6 1-7 1-8 1-9 1-10

- 1) this flower is **pink** and **yellow** in color, with petals that are **striped** near the center.
- 2) this flower has large **wide red petals** with **vertical striations** surrounding thin **pink stamen**.
- 3) **dark pink petals** with **yellow** and **black stripes** in the middle green long leaves.
- 4) petals are **red** in color and are **rounded** in shape.
- 5) this flower has petals that are **red with black lines**.
- 6) this flower has smooth and large **red petals** which are **wide** and **slightly ruffled**.
- 7) this flower is **pink** in color, and has petals that are **oval shaped**.
- 8) this flower has petals that are **pink** with blotches of yellow and **purple lines**.
- 9) the flower has **maroon petals** and a **yellow** and **black** spotted stamen, with lavender colored filaments.
- 10) this flower is **light red** and has a **yellow spot** on it.



- 1) this flower has a bright yellow stamen and a **pink** and **orange petal**.
- 2) this flower has several wide **purple petals** with **yellow tinted** accents.
- 3) the **five petals** on this flower are very delicate, and uniquely it has three petals that are **yellow**.
- 4) two of the four petals look like they have come from a **leopard**.
- 5) this flower is **pink** and **yellow** in color, with petals that are **spotted**.
- 6) this flower has **orange petals** with **yellow patches** and **black lines**.
- 7) this flower has **yellow petals** as well as a **green pistil**.
- 8) this **multicolored flower** has **orange petals** along with **yellow petals** that have **darker lines** on them.
- 9) this flower has layers of **peach colored petals** with **yellow** and **dark red markings**.
- 10) this flower is **pink**, **orange**, and **yellow** in color, with **multi colored** petals.



- 1) this flower is **pink** and **red** in color, with petals that are **oval shaped**.
- 2) this flower has petals that are **pink with red steman**.
- 3) this flower has a **red**, **spiky center** with **orange dots**, and surrounded by **long**, **light purple petals**.
- 4) the flower has **thin purple petals** surround the **red stamen** in the middle.
- 5) the flower has **multiple purple petals** that are **long**, **thin** and **oval shaped**.
- 6) the petals of this flower are **pink** and the pistil is **red**.
- 7) this **light purple** flower has **numerous slim**, **sparse petals** that surround a round pistil of a **red color**.
- 8) this flower is **pink** and **red** in color, and has petals that are **oval shaped**.
- 9) this flower has petals that are **pink** and has **red stamen**.
- 10) this flower has **long**, **skinny purple petals** with a **red** and **black spherical pistil**.



- 1) the flower has several thin and oblong **pink petals**, with a large center of **dark orange pistils**.
- 2) the petals of the flower are **light pink** in color and have a **brown middle**.
- 3) this flower is **pink** and **brown** in color, with petals that are **oval shaped**.
- 4) the flower has **long pink petals** with a **wavy edge** and a **dark brown pistil**.
- 5) this flower has petals that are **pink** with **black stigma**.
- 6) this flower has a **large brownish pistil** with long **narrow pink petals** surrounding it.
- 7) this flower has a **round brown center** and **thin pink petals** which have tapered tips.
- 8) this flower has **pink petals** and has many **red stamen**.
- 9) this **light pink** flowers has **long** and **thin** petals and a large, **brown pistil**.
- 10) this flower has **thin pink petals** with a **full round scarlet stamen**.



- 1) this flower has petals that are **pointed** and **orange with white centers**.
- 2) this flower has a **long orange petal** with a **white center**.
- 3) the beautiful autumn burnt **orange color** pales in comparison to the sun kissed **gold colored petals**.
- 4) this flower is **yellow** and **white** in color, with petals that are **pointed at the tips**.
- 5) this flower has a lot of **colorful**, **pointed petals**.
- 6) this flower has petals that are **orange** and are very **thin**.
- 7) this flower has **large yellow petals** and light green pedicel.
- 8) the petals are sharply **pointed** and **orange**, and there is one large, pointed sepal.
- 9) this flower has a **sparse arrangement** of tall, spiky **orange petals**.
- 10) this flower has **yellow petals** as well as a white pedicel.



N/A 1-1 1-2 1-3 1-4 1-5 1-6 1-7 1-8 1-9 1-10

Figure 5. The synthesized images with increasing captions: the bold words in a caption indicate the prominent features, and $I-b$ indicates the image is generated with the captions from the first one to the b^{th} one.

