

Robust Object Detection under Occlusion with Context-Aware CompositionalNets

Supplementary Material

1. Additional Detection Result Visualization

For all visualizations, we use the same notation. Green boxes: Proposals of CA-CompositionalNet via BB Voting. Blue Boxes: Ground truth. Yellow Boxes: Proposals of CA-CompositionalNet via RPN. Red Boxes: Proposals of Faster R-CNN.

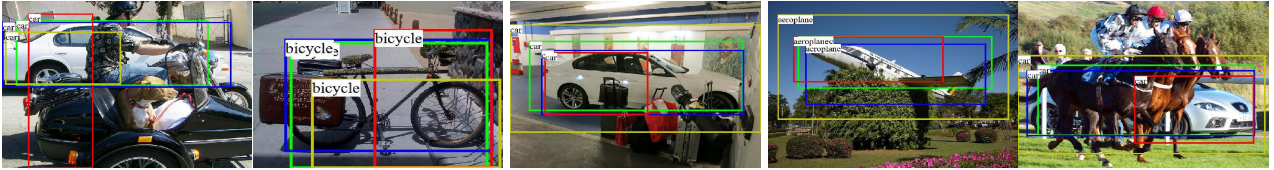


Figure 1: Detection results on the heavy occlusion OccludedCOCO Dataset.

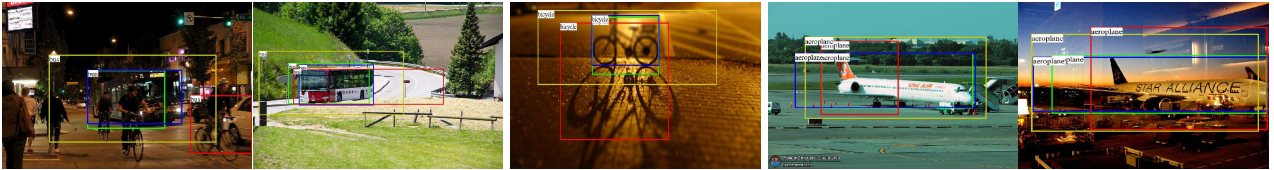


Figure 2: Detection results on the light occlusion OccludedCOCO Dataset.

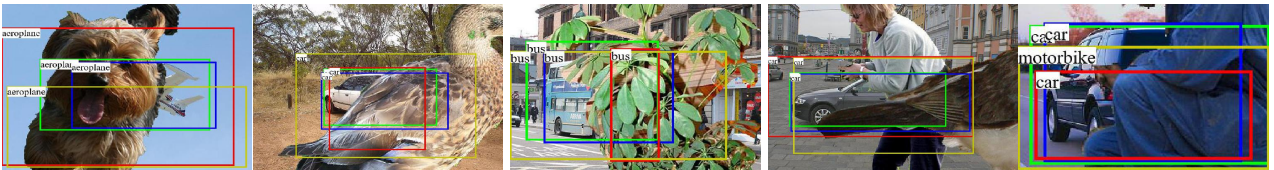


Figure 3: Detection results on the OccludedVehiclesDetection Dataset with foreground level 3 background level 3 occlusion.

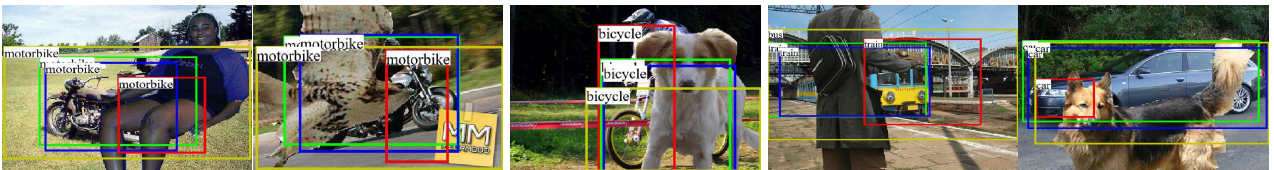


Figure 4: Detection results on the OccludedVehiclesDetection Dataset with foreground level 2 background level 2 occlusion.