

Neural 3D Mesh Renderer

Hiroharu Kato¹, Yoshitaka Ushiku¹, and Tatsuya Harada^{1,2}

¹The University of Tokyo, ²RIKEN

{kato,ushiku,harada}@mi.t.u-tokyo.ac.jp

A. Additional results

Figure 1 and Figure 2 show additional results of 3D reconstruction. Figure 3, Figure 4, Figure 5, and Figure 6 show additional results of style transfer.

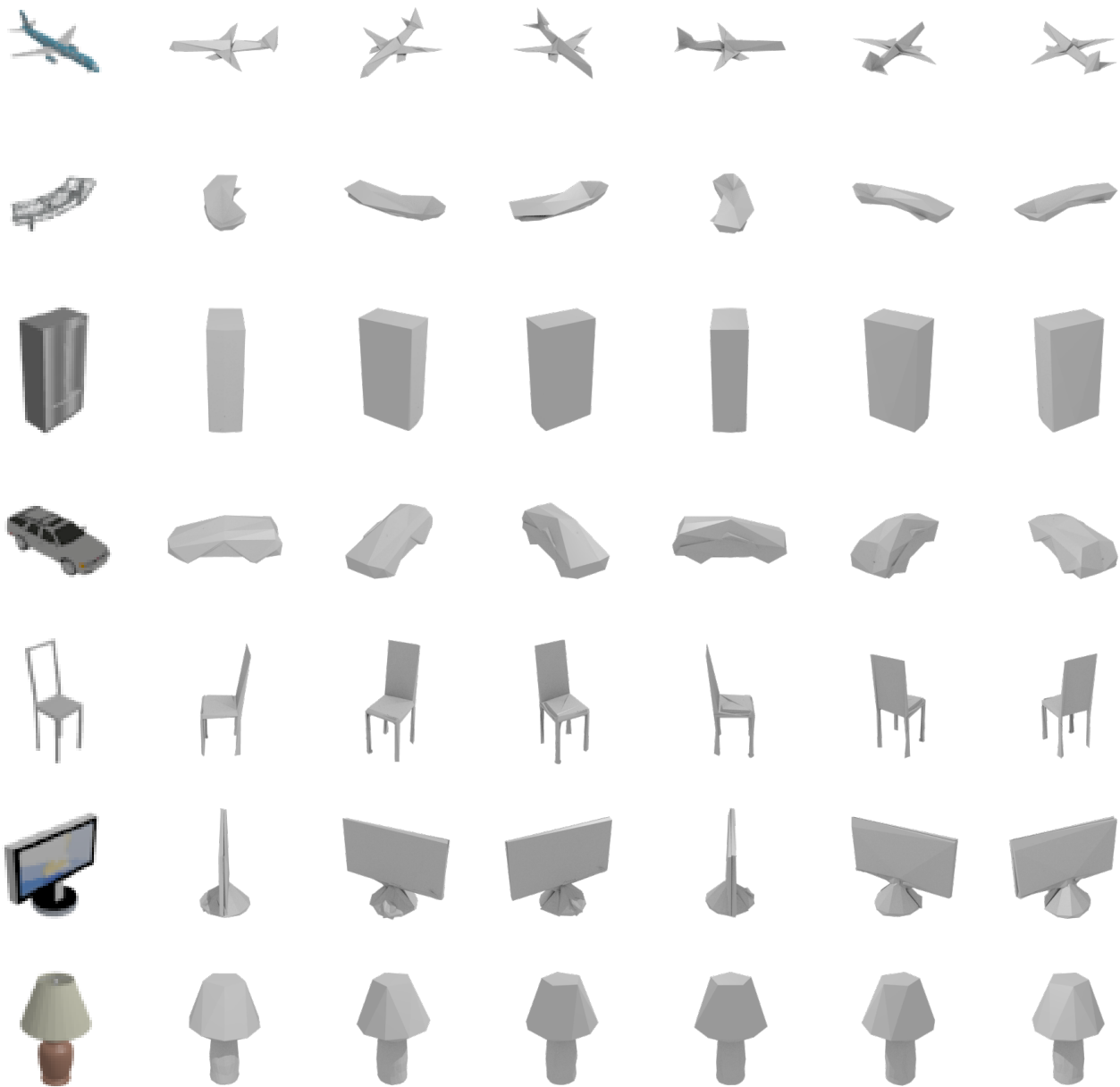


Figure 1. 3D mesh reconstruction from a single image. The leftmost images are the inputs. Results are rendered from six viewpoints.

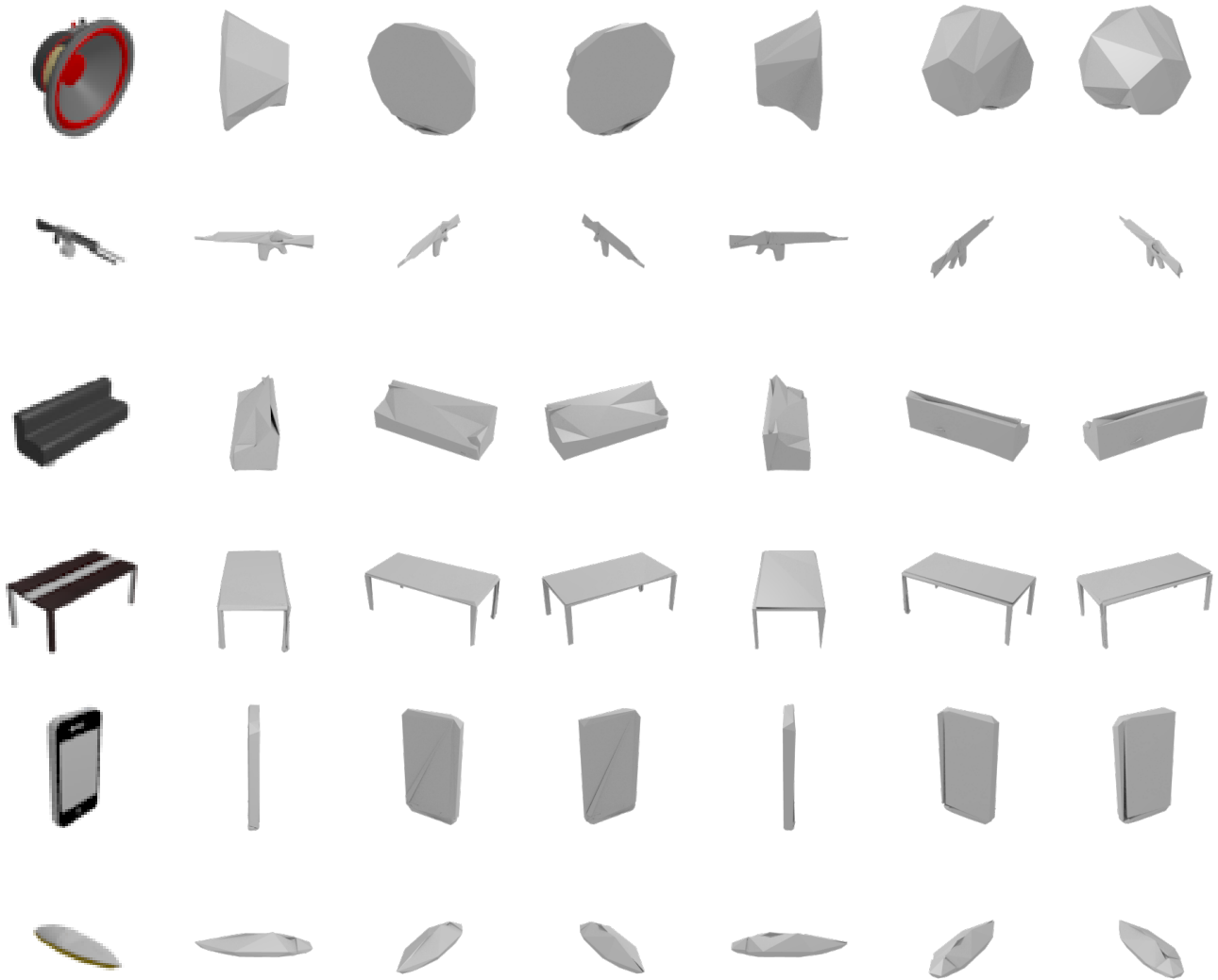


Figure 2. 3D mesh reconstruction from a single image. The leftmost images are the inputs. Results are rendered from six viewpoints.



Figure 3. Additional results of style transfer. The style images are *Self-Portrait* (A. Bailly, 1917), *Thomson No. 5 (Yellow Sunset)* (D. Coupland, 2011), *The Tower of Babel* (P. Bruegel the Elder, 1563), *Jesuits III* (L. Feininger, 1915), *Ritmo plastico del 14 luglio* (S. Gino, 1913), *The Starry Night* (V. van Gogh, 1889), and *Portrait of Pablo Picasso* (J. Gris, 1912).

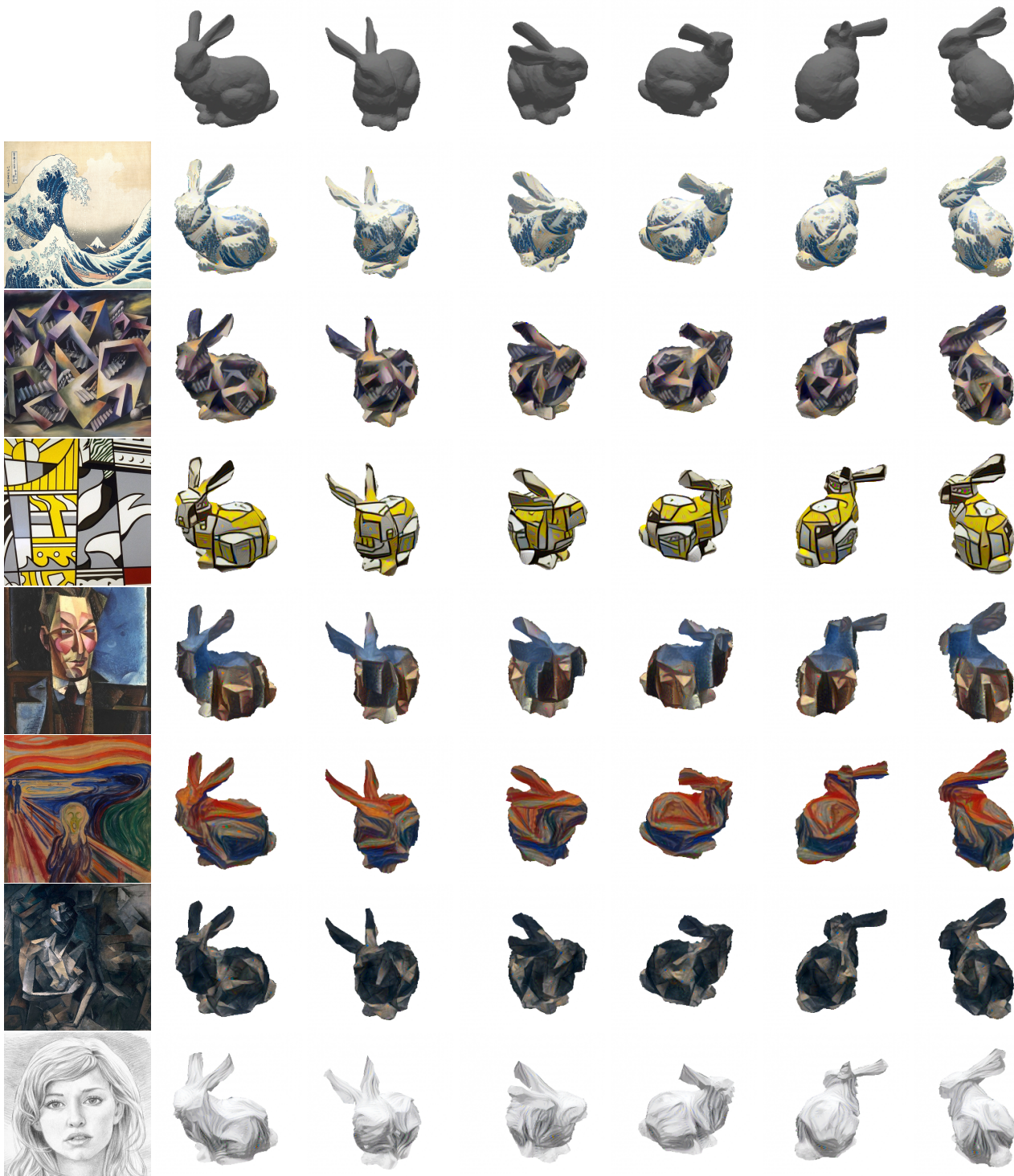


Figure 4. Additional results of style transfer. The style images are *The Great Wave off Kanagawa*, (Hokusai, 1829-1832), *The Trial* (W. Lettl, 1981), *Bicentennial Print* (R. Lichtenstein, 1975), *Portrait of a Friend* (M. H. Maxy, 1926), *The Scream* (E. Munch, 1910), *Femme nue assise* (P. Picasso, 1909), and *Sketch*.

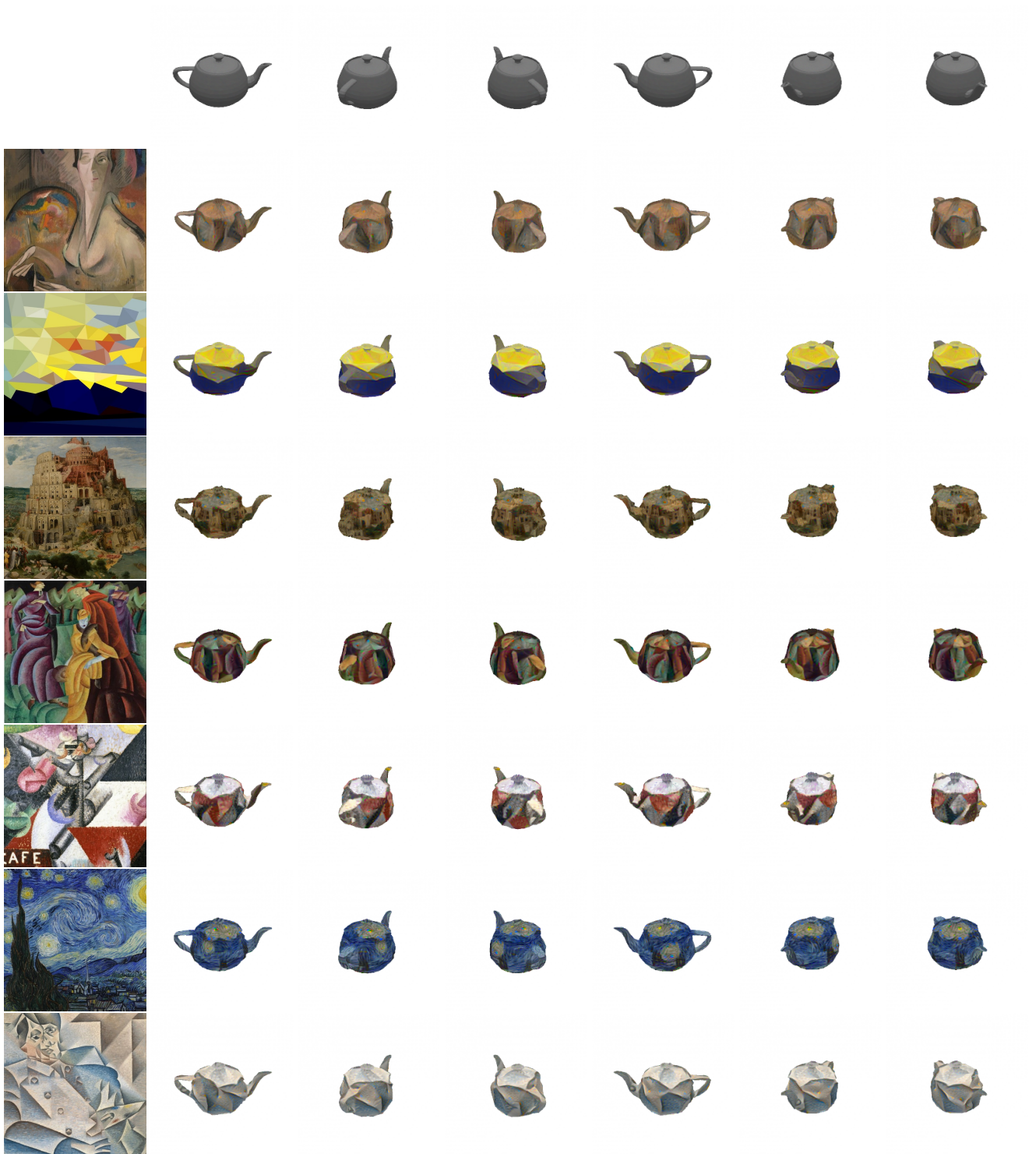


Figure 5. Additional results of style transfer. The style images are *Self-Portrait* (A. Bailly, 1917), *Thomson No. 5 (Yellow Sunset)* (D. Coupland, 2011), *The Tower of Babel* (P. Bruegel the Elder, 1563), *Jesuits III* (L. Feininger, 1915), *Ritmo plastico del 14 luglio* (S. Gino, 1913), *The Starry Night* (V. van Gogh, 1889), and *Portrait of Pablo Picasso* (J. Gris, 1912).

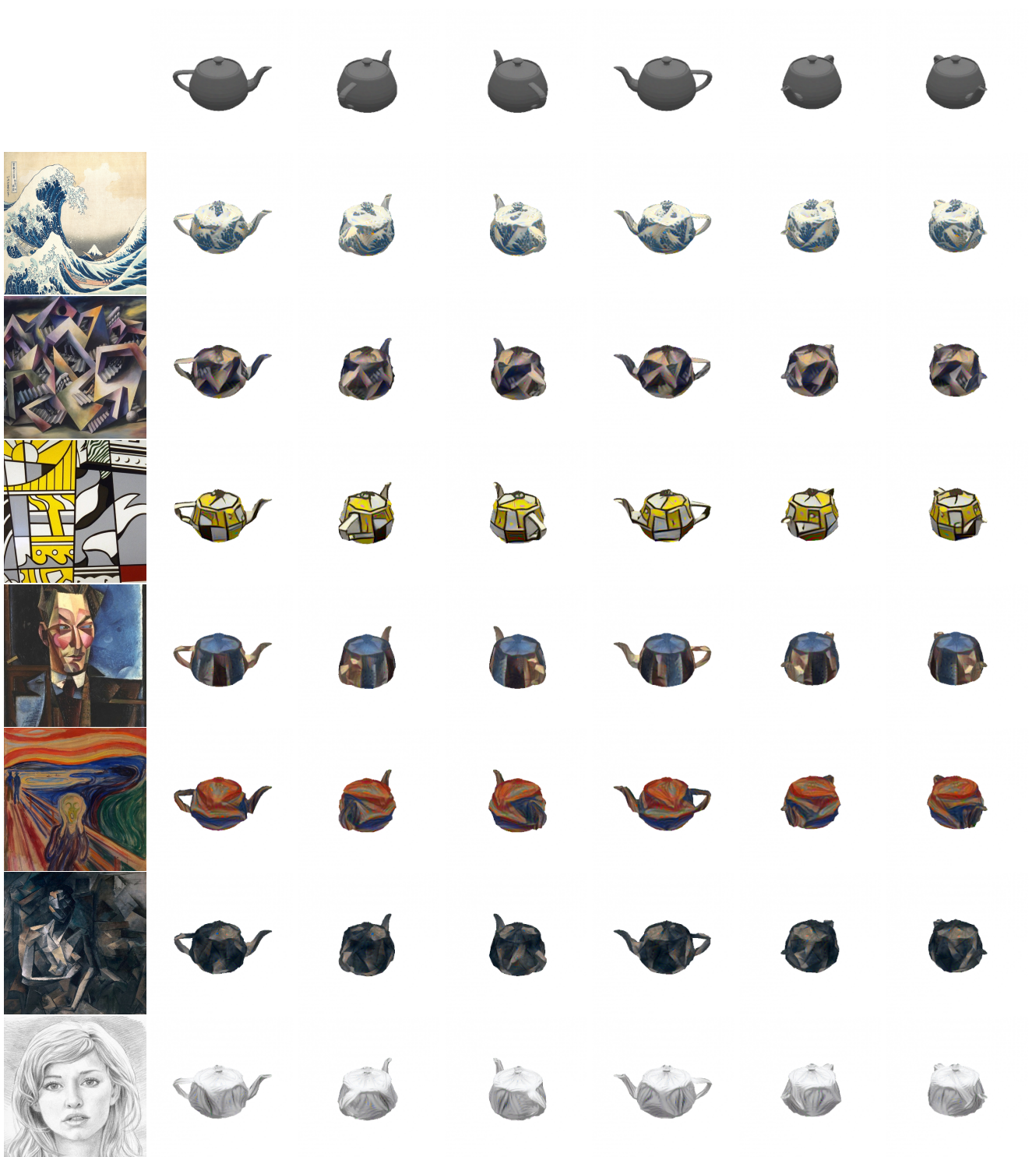


Figure 6. Additional results of style transfer. The style images are *The Great Wave off Kanagawa*, (Hokusai, 1829-1832), *The Trial* (W. Lettl, 1981), *Bicentennial Print* (R. Lichtenstein, 1975), *Portrait of a Friend* (M. H. Maxy, 1926), *The Scream* (E. Munch, 1910), *Femme nue assise* (P. Picasso, 1909), and *Sketch*.