

# JPEG2000

Low Compression Ratios

# Input



JPEG2000, R=75



Our,  $R=75$



# Input



# JPEG2000, R=45



Our,  $R=45$



# Input



JPEG2000, R=45



Our,  $R=45$



# Input



JPEG2000, R=75



Our,  $R=75$



# Input



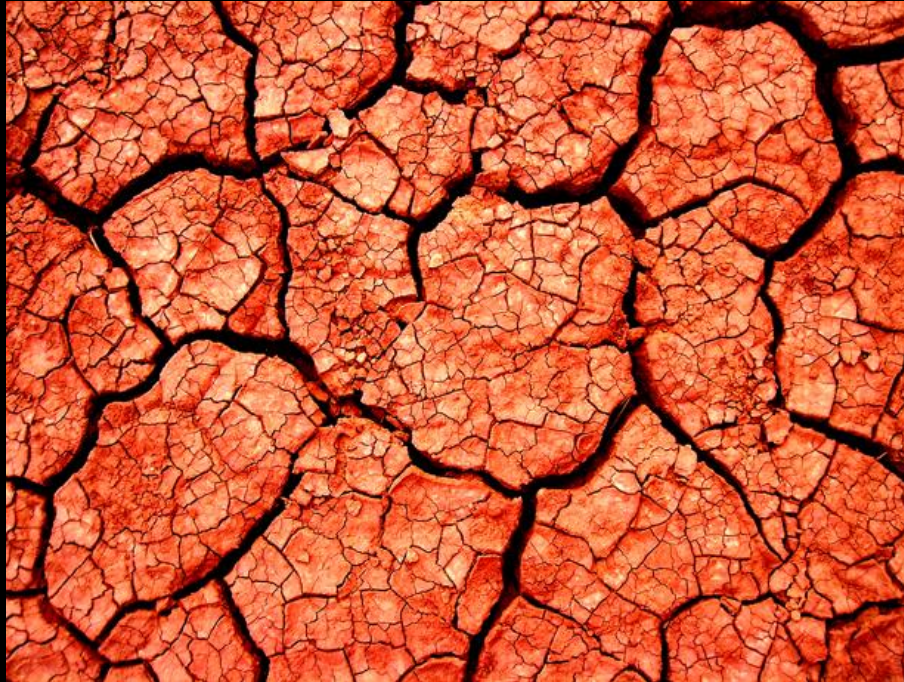
JPEG2000, R=75



Our,  $R=75$



# Input



JPEG2000, R=75



Our,  $R=75$



# Input



JPEG2000, R=75



Our,  $R=75$



# Input



JPEG2000, R=75



Our,  $R=75$



# Input



# JPEG2000, R=75



Our,  $R=75$



# Input



# JPEG2000, R=65



Our,  $R=65$



# JPEG2000

Mid/High Compression Ratios

# Input



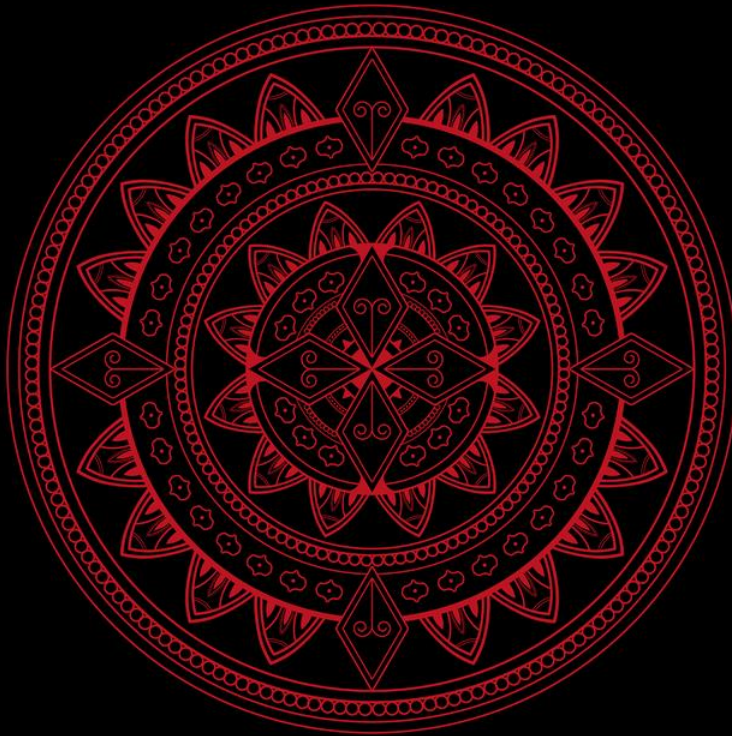
JPEG2000, R=125



Our,  $R=125$



# Input



JPEG2000, R=125



Our,  $R=125$



# Input



JPEG2000, R=125



Our,  $R=125$



# Input



JPEG2000, R=125



Our,  $R=125$



# Input



JPEG2000, R=175



Our, R=175



# Input



JPEG2000, R=150



Our,  $R=150$



# Input



JPEG2000, R=125



Our,  $R=125$



# Input



JPEG2000, R=125



Our,  $R=125$



Input



JPEG2000, R=125



Our,  $R=125$



# Input



JPEG2000, R=175



Our,  $R=175$



# Input



JPEG2000, R=125



Our,  $R=125$



# Input



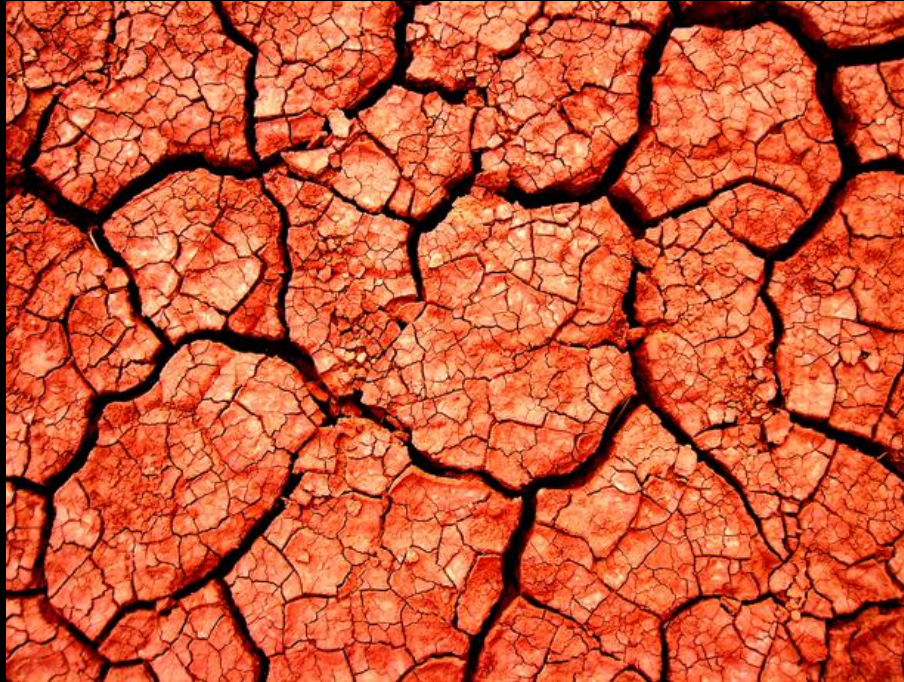
JPEG2000, R=125



Our, R=125



# Input



JPEG2000, R=150



Our,  $R=150$



# Input



JPEG2000, R=150



Our,  $R=150$



# Input



JPEG2000, R=175



Our, R=175



# Input



JPEG2000, R=175



Our,  $R=175$



# Input



JPEG2000, R=175



Our, R=175



# JPEG

Mid/Low quality indices

# Input



JPEG, Q=15



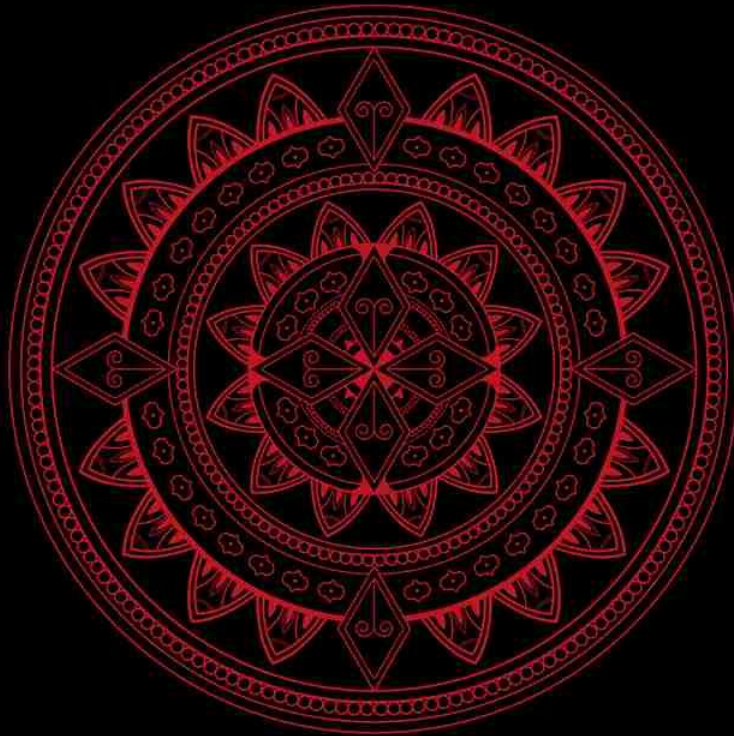
Our,  $Q=15$



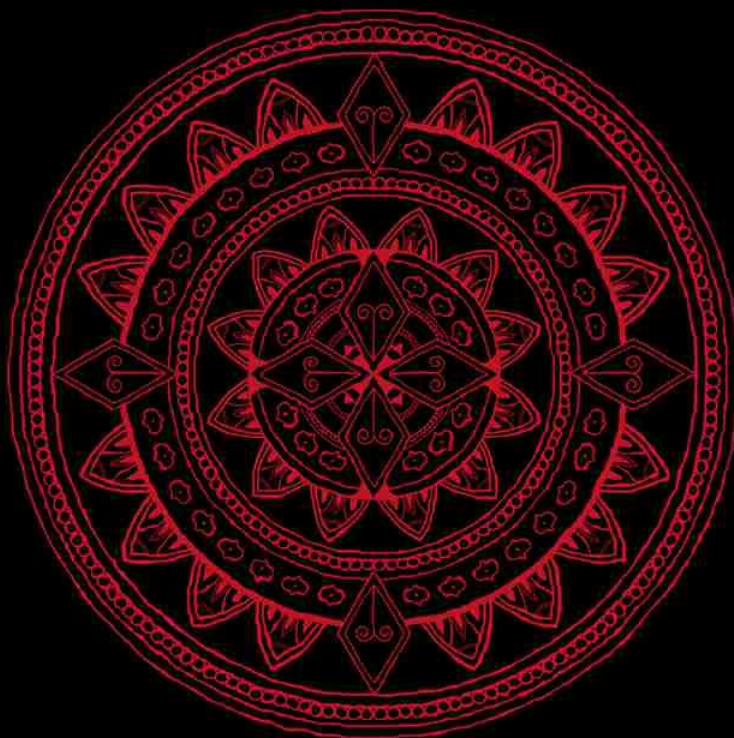
# Input



JPEG, Q=20



Our,  $Q=20$



# Input



JPEG, Q=15



Our, Q=15



# Input



JPEG, Q=15



Our,  $Q=15$



# Input



JPEG, Q=10



Our,  $Q=10$



# Input



JPEG, Q=10



Our,  $Q=10$



# Input



JPEG, Q=10



Our,  $Q=10$



Input



JPEG, Q=10



Our,  $Q=10$



# Input



JPEG, Q=10



Our,  $Q=10$



# JPEG

Low/Very-Low Quality Indices

# Input



JPEG, Q=10



Our,  $Q=10$



# Input



JPEG, Q=5



Our,  $Q=5$



# Input



JPEG, Q=10



Our,  $Q=10$



# Input



JPEG, Q=10



Our,  $Q=10$



# Input



JPEG, Q=10



Our,  $Q=10$



Input



JPEG, Q=10



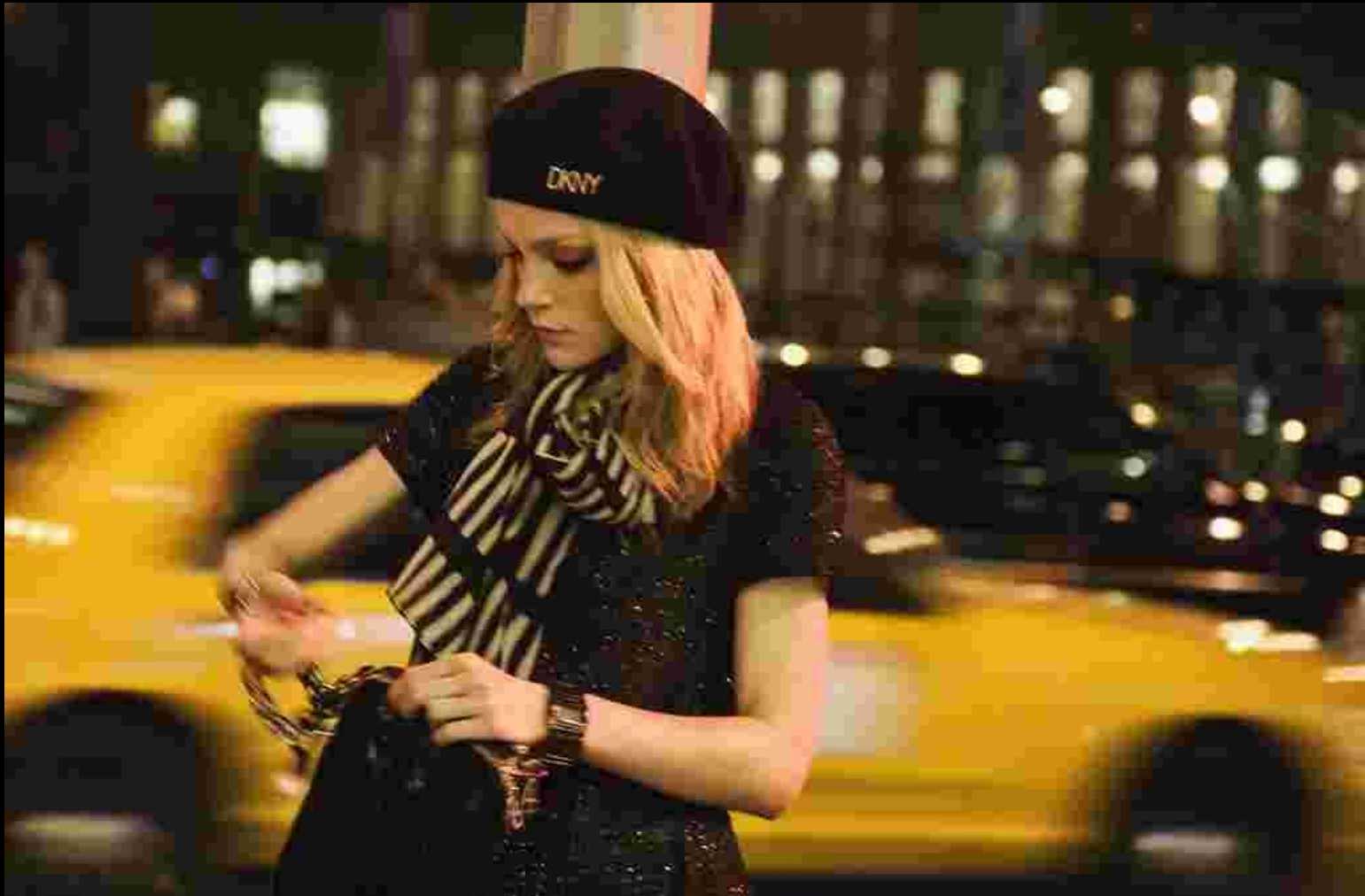
Our,  $Q=10$



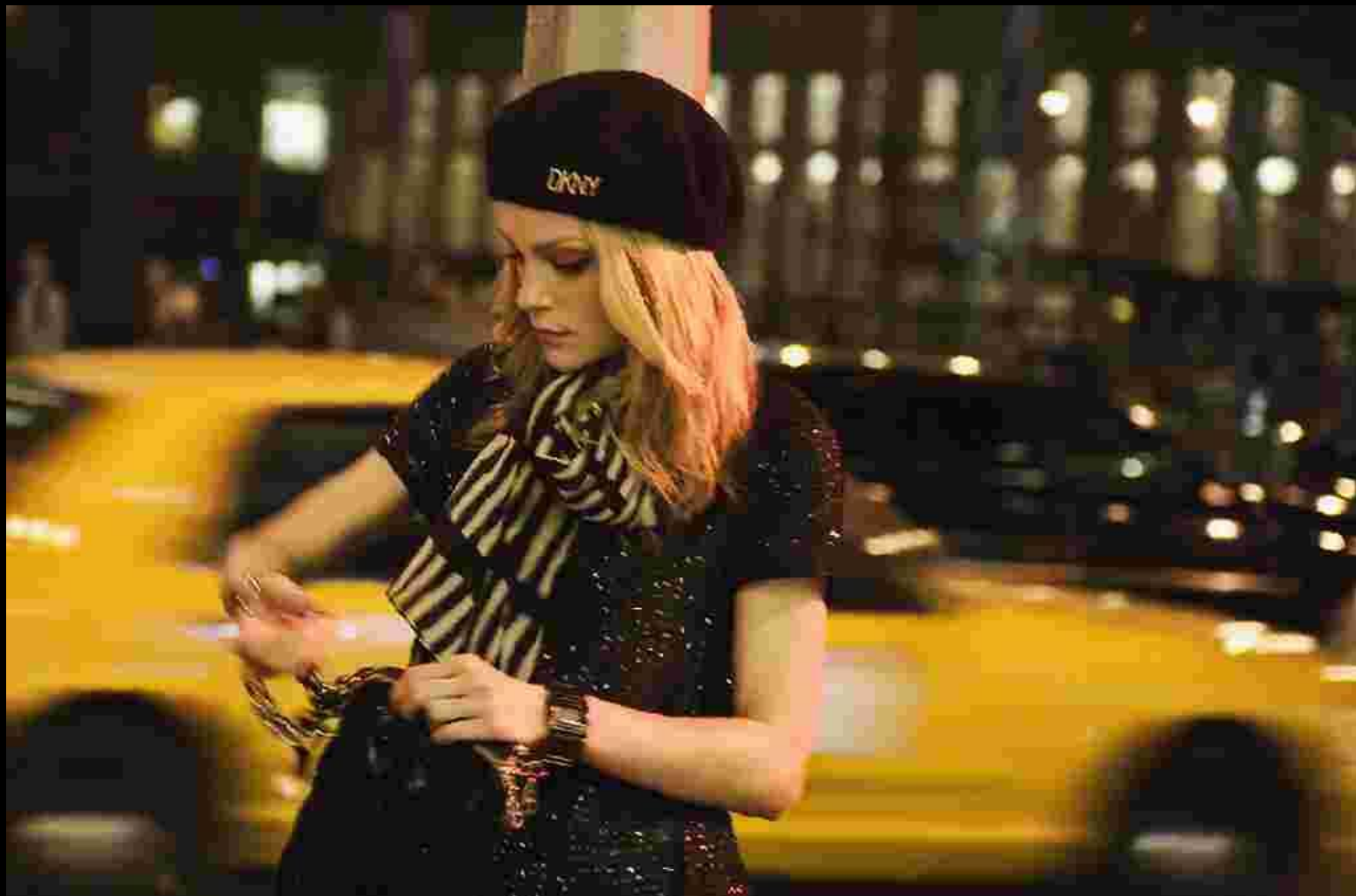
# Input



JPEG, Q=10



Our,  $Q=10$



# Input



JPEG, Q=10



Our,  $Q=10$



# Input



JPEG, Q=15



Our,  $Q=15$



WebP

# Input



WebP, Q=2



Our,  $Q=2$



# Input



WebP, Q=2



Our,  $Q=2$



# Input



WebP, Q=10



Our,  $Q=10$



# Input



WebP, Q=12



Our, Q=12



# Input



WebP, Q=12



Our,  $Q=12$



Input



WebP, Q=5



Our,  $Q=5$



# Input



WebP, Q=5



Our,  $Q=5$



BPG

# Input



BPG,  $Q=45$



BPG,  $Q=45$



# Input



BPG, Q=45



Our,  $Q=45$



# Input



BPG, Q=42



Our,  $Q=42$



# Input



BPG, Q=40



Our,  $Q=40$



# Input



BPG, Q=45



Our, Q=45



G. Toderici, D. Vincent, N. Johnston, S. J. Hwang, D. Minnen, J. Shor, and M. Covell.

# Full Resolution Image Compression with Recurrent Neural Networks

Low/Mid Compression Ratios

# Input



# Deep Coding, 32:1



Our, 32:1



# Input



# Deep Coding, 32:1



Our, 32:1



# Input



# Deep Coding, 38.4:1



Our, 38.4:1



# Input



# Deep Coding, 38.4:1



Our, 38.4:1



# Input



# Deep Coding, 38.4:1



Our, 38.4:1



# Input



# Deep Coding, 48:1



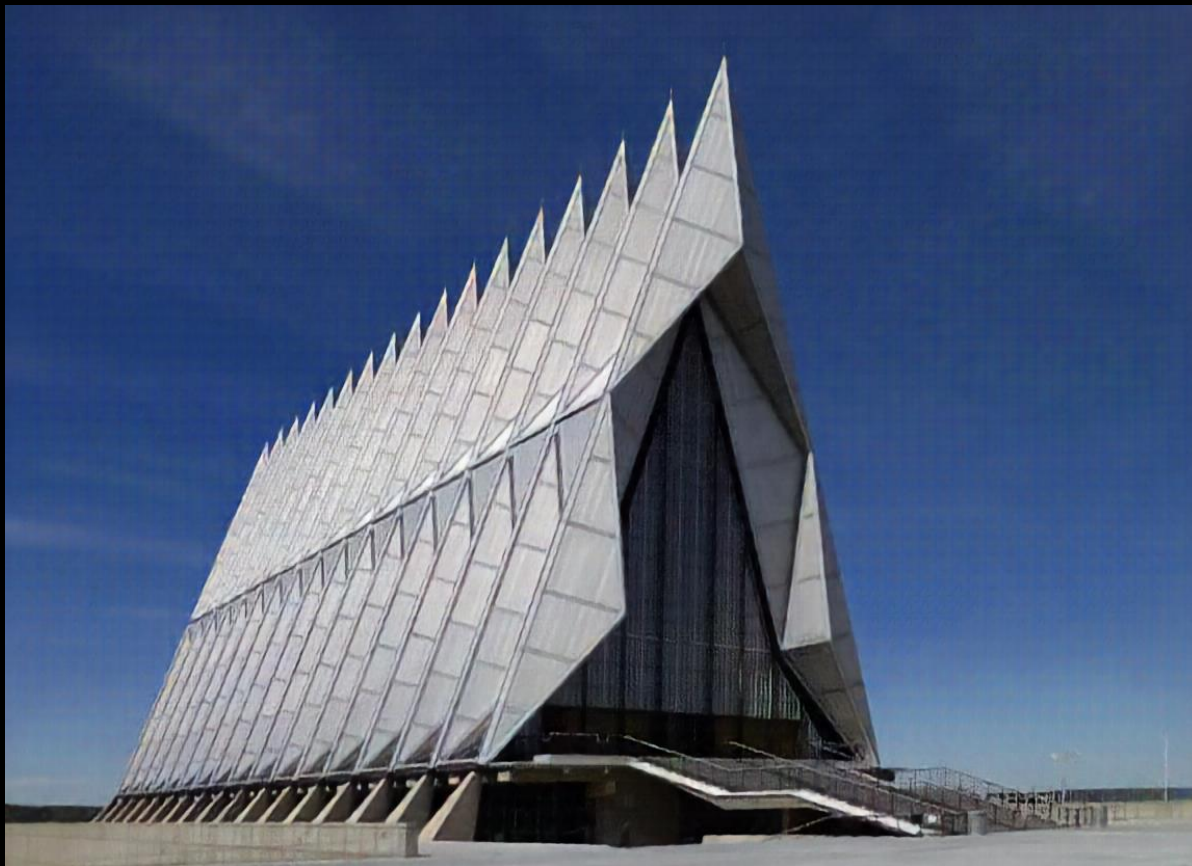
Our, 48:1



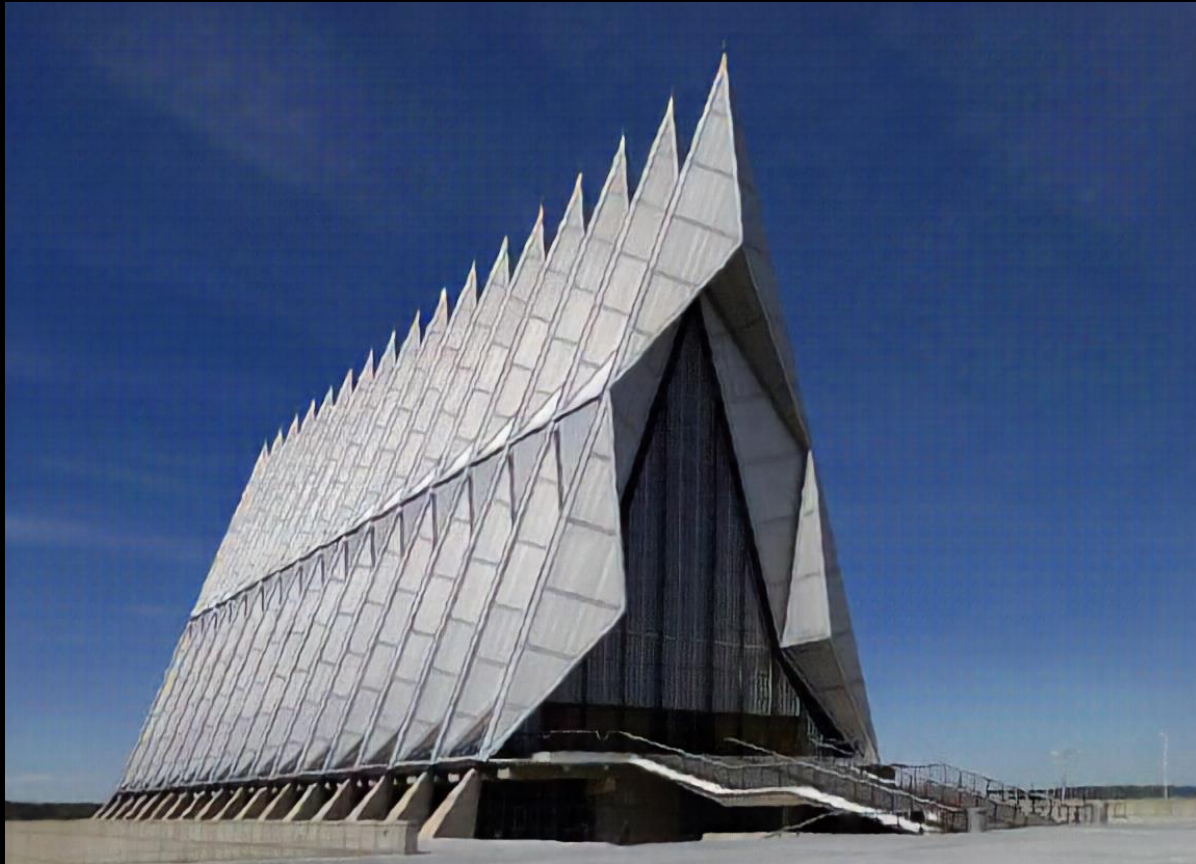
# Input



# Deep Coding, 48:1



Our, 48:1



# Input



# Deep Coding, 48:1



Our, 48:1



# Input



# Deep Coding, 48:1



Our, 48:1



# Input



# Deep Coding, 64:1



Our, 64:1



# Input



# Deep Coding, 64:1



Our, 64:1



# Input



# Deep Coding, 64:1



Our, 64:1



# Input



# Deep Coding, 64:1



Our, 64:1



# Input



# Deep Coding, 96:1



Our, 96:1



# Input



# Deep Coding, 96:1



Our, 96:1

