

Figure 1. **Supplementary T1 segmentation examples for various subject scans.** For each subject, the left column shows the "ground truth" as estimated with FreeSurfer, and the right illustrates our prediction. The first row overlays anatomical structures on top of the subject scan to clearly indicate the proposed segmentation. The second row shows outlines of each structure to allow comparison with the subject scan.

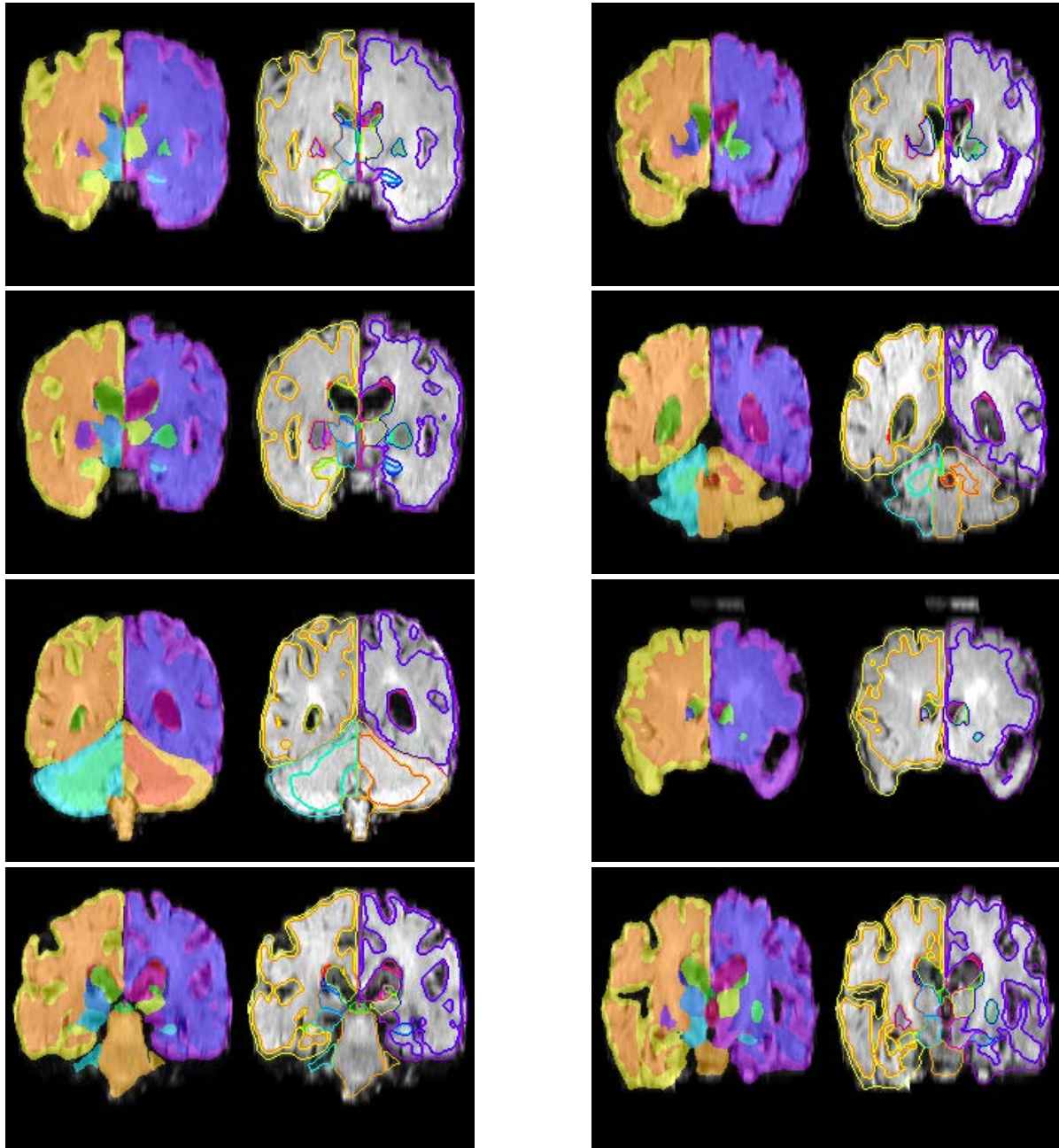


Figure 2. **Supplementary T2-FLAIR segmentation examples for various subject scans.** The first column overlays anatomical structures on top of the subject scan to clearly indicate the proposed segmentation. The second column draws outlines of each structure to allow comparison with the subject scan. Different coronal slices illustrate the variability and difficulty of the task.